



FLINDERS CENTRE FOR
OPHTHALMOLOGY, EYE AND VISION RESEARCH
ANNUAL REPORT 2013

www.flinders.edu.au/medicine/sites/ophthalmology/research

Disclaimer

The original deadline within the Faculty of Medicine, Nursing and Health Sciences was 10.00am Wednesday 13th August 2014. At the time of compiling this report to meet this deadline, no data had been received from the Research Data Team. This document has been prepared with information collected internally.

Flinders Centre for Ophthalmology, Eye and Vision Research

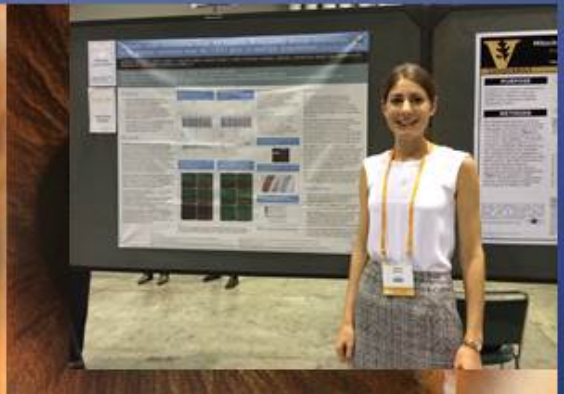


Table of Contents

Mission Statement and Background to The Centre	Page 4
Current Centre Membership	Page 5
Director's Report	Page 6
Summary Tables of Research Outputs	Page 7
Performance measured against Key Performance Indicators (KPIs)	Page 8
Governance	Page 11
Awards, Outreach, Notable Collaborations, and Opportunities Generated	Page 12
Budget Acquittal	Page 14
Viability/Financial Sustainability of FCOEVR	Page 16
Appendix 1: Higher Research Degree Completions 2013-14, Load and Mentoring	Page 17
Appendix 2: Publications, 2013-14	Page 18
Appendix 3: Grant Income, 2013-14	Page 28
Appendix 4: Presentations at Meetings, 2013-14	Page 33
Appendix 5: Collaborations, 2013-14	Page 46
Appendix 6: Awards and Prizes, Recognition, Competitive Fellowships, 2013-14	Page 50
Appendix 7: Service to Disciplines of Ophthalmology and Optometry	Page 51
Appendix 8: Centre Weekly Seminar Program Lists, 2013-14	Page 58

Mission Statement

Blindness has an enormous impact on quality of life, may shorten life-span and, according to the World Health Organization, is the most expensive of all causes of serious disablement. Our common goal is to improve outcomes for patients in our community with blinding eye conditions.

Background to The Centre

Our Centre, first established in 2005 with support from Flinders University, conducts research related to the eye. Based in the Departments of Ophthalmology and Optometry, its members maintain extensive collaborations locally, nationally and internationally. Our common goal is to improve outcomes for patients in our community with blinding eye conditions. We focus on the nexus between vision and health, a major issue in Australia with its ageing population.

Our over-arching goal is to improve patient outcomes. Our research programs encompass basic biomedical science, applied research, clinical research, translational research, and health services management research. Our multidisciplinary research programs are geared to:

- understanding the pathophysiology and genetic background of common eye conditions;
- developing novel ophthalmic therapeutic agents and biomaterials;
- establishing and interrogating registers for common eye disorders;
- understanding the relationships between optical quality and visual performance;
- developing patient-reported measures of quality of life and new methods of care delivery;
- improving the evidence-base that underpins effective eye and vision care.

We currently focus on:

- corneal dystrophies and ectasias;
- inflammatory and infective eye conditions including corneal transplant rejection and uveitis;
- glaucoma;
- congenital and adult cataract;
- retinopathy of prematurity, diabetic retinopathy and aberrant ocular angiogenesis;
- central retinal artery and retinal vein occlusion;
- quality of life and patient-recorded outcomes.

Our key performance indicators include:

- ERA performance (discipline area of Ophthalmology and Optometry);
- PhD and other research student load and completions;
- publications in peer-reviewed journals;
- award of external grant funding;
- presentations at national and international meetings;
- research translation into clinical practice;
- collaborations;
- recognition through fellowships, awards and other esteem factors;
- service to the disciplines of Ophthalmology and Optometry.

Current Centre Membership

Members

Prof Keryn Williams	Prof Sonja Klebe
Dr Binoy Appukuttan	Dr John Landers†
Dr Mona Awadalla	Dr Shervi Lie (from Feb 2014)
Dr Paul Badenoch†	Dr Yeufang Ma (from July 2014)
Dr Veronika Bandara (from May 2014)	Dr Colm McAlinden*
Dr Helen Brereton	A/Prof Richard Mills†
Dr Kathryn Burdon (to Dec 2013)	Prof Konrad Pesudovs
A/Prof Celia Chen†	Dr Roman Serebrianik
Prof Jamie Craig†	Dr Shiwani Sharma
Dr David Hammond (to July 2014)	Prof Justine Smith
Dr Miriam Keane	Dr Melinda Tea (to May 2014)
Dr Jyoti Khadka	A/Prof Rod Watkins

Clinical adjunct members

Dr Stewart Lake†	Dr Niladri Saha†
Dr Raymond Loh†	Dr Deepa Taranath†

Student members

Ms Alpana Dave	Dr Georgia Kaidonis
Dr Jude Fitzgerald	Mr Abraham Kuot
Mr Yazad Irani	Dr Mallika Prem Sathil
Ms Sharhbanou (Shari) Javadiyan	Dr Tiger Zhou

Research Assistants/Associates

Ms Susan Aldhous	Ms Slavica Miskovich
Mr Liam Ashander	Ms Lauren Mortimer
Ms Shengnan Chen	Mrs Margaret Philpott
Mr Rhys Fogarty (to March 2014)	Mr Stephen Pulbrook
Dr Rachel Galettis	Ms Emmanuelle Souzeau
Ms Ashleigh Hocking	Mr Andrew Stempel
Ms Sarah Martin	

Adjunct members

Mr Andrew Brown	Mrs Lefta Leonardos
Ms Madi Helm	Ms Bronwyn Ridge
Mrs Vicky Jones	Ms Karina Skrzpiec

Research Development Officers

Ms Deb Sullivan	Ms Anne Cazneaux
-----------------	------------------

† SA Health/SA Pathology/FMC staff members

* FUSA Visiting Adjunct Lecturer/University of Ulster, United Kingdom

Director's Report, 2013-14

Executive Summary

Our Centre conducts research related to the eye. Based in the Departments of Ophthalmology and Optometry, our approaches include programs in basic biomedical science, strategic and applied research, clinical and translational research, and health services management research.

Research student completions and current load (Appendix 1)

During 2013, two students were awarded the degree of PhD and one the degree of BSc (Hons). We currently supervise 6 PhD students (5 supported by competitive scholarships) and one Masters student, all enrolled through Flinders University.

Publications (Appendix 2)

Since January 2013, members of the Centre have published (or have in press) 104 primary research articles in peer-reviewed journals, 17 of which were co-authored by our research students. Centre members also published 5 book chapters and 15 other letters and editorials in referred journals.

External grant funding (Appendix 3)

Centre members generated over \$3M in competitive external research grant income as Chief Investigators in 2013 and have generated over \$3M thus far in 2014. One member was awarded an ARC Future Fellowship in late 2013.

Presentations at national and international meetings (Appendix 4)

Since January 2013, Centre members have delivered 111 presentations at international meetings and 35 at national meetings. Of these, 55 were by invitation.

Collaborations (Appendix 5)

Centre members maintain extensive collaborations locally, nationally and internationally.

Competitive fellowships, awards and prizes, recognition (Appendix 6)

Members include one NHMRC Principal Research Fellow, one NHMRC Practitioner Fellow and one ARC Future Fellow.

Service to disciplines of Ophthalmology and Optometry (Appendix 7)

Members belong to a variety of professional organizations, have organized scientific meetings, sit on national committees and editorial boards, and undertake extensive peer-review including on grant and fellowship review panels.

Research translation (Appendix 8)

The Centre operates the NHMRC Centre for Clinical Eye Research in Evidence Based Ophthalmology, the Australian and New Zealand Ophthalmic Surveillance Unit, the Australian and New Zealand Registry of Advanced Glaucoma, the Australian Corneal Graft Registry and the Eye Bank of SA. Members ran an Evidence-based Ophthalmology Workshop in Hobart in 2013 and have run an Evidence-based Optometry Workshop in Adelaide in 2014.

Alignment with University Strategic Plan

We are increasing our research student load and mentoring, increasing our research outputs, growing our Centre size, increasing our collaborations, and increasing our service to the discipline and community, including the Indigenous community.

Summary Tables of Research Outputs

Flinders Centre for Ophthalmology, Eye & Vision Research Annual Report 2013 Statistic

Membership Details					
Years	Core Researchers	Clinical Associates	Students	Research Assistants	Adjunct Members/Others
2005-2008	12	8	7	7	
2009-2012	19	4	12	7	8
2012-2013	22	5	12	12	10

Publications					
Year	Totals	Peer Reviewed	Other	Book Chapter/Book	
2008	37	37			Sum (2008-2010) 147
2009	64	55	7	2	
2010	62	55	5	2	
2011	76	70	5	1	Sum (2011-2013) 220
2012	92	85	6	1 book	
2013	75	65	7	3	

Grant Income		
Year	Totals	
2008	\$2,075,825.00	Sum (2008-2010) \$7,332,369.00
2009	\$2,593,248.00	
2010	\$2,663,296.00	
2011	\$2,894,842.00	Sum (2011-2013) \$9,353,624.00
2012	\$2,952,714.00	
2013	\$3,506,068.00	

Presentations at Meetings				
Year	International	National	Invited	
2008	7	13	7	Sum (2008-2010) 65
2009	39	28	23	
2010	46	26	35	
2011	36	12	27	Sum (2011-2013) 85
2012	21	10	15	
2013	80	23	43	

Performance measured against our Key Performance Indicators (KPIs)

Key performance indicators

- PhD and other research student load and completions;
- publications in peer-reviewed journals;
- award of external grant funding;
- presentations at national and international meetings;
- research translation into clinical practice;
- establishment and maintenance of collaborations;
- recognition through fellowships, awards and other esteem factors;
- service to the disciplines of Ophthalmology and Optometry; and
- ERA performance.

The evidence for the following summary of performance outcomes may be found in Appendices 1-8.

Goal 1: Increase the level of high-quality research activity. Encourage, support and expand multi-disciplinary research teams and next generation research.

- *KPI: Number of publications in peer-reviewed journals will increase by 10% over three years, compared with baseline (2008-10 = 147).* This KPI has been met. From 2011-13 inclusive, we published 220 articles in peer-reviewed journals.
- *KPI: Support the next generation of researchers by increasing the number and size of our multidisciplinary research teams and the number of young researchers.* The FCOEVR has met this goal. Overall membership of the Centre has increased. The Optometry research unit includes early-career researchers (e.g. Dr Jyoti Khadka). The specialist national registries in Ophthalmology operated through the Centre have increased in size, and also include young researchers (e.g. Dr Miriam Keane, accepted in 2014 into the DVC-R's young research leaders' programme). The actual and virtual sizes of the major research teams have grown, supported by new research grants and through new local, national and international collaborations.
- A major new research team was established in 2013 with the arrival of a Level E Strategic Research Professor, Professor Justine Smith, now an ARC Future Fellow. Professor Smith brought a research team of three individuals (including a mid-career researcher, Dr Appukuttan) with her from Oregon, USA. Her team has now already grown to seven, including two early career researchers. Our research teams include ophthalmologists, optometrists, a pathologist, scientists, a genetic counsellor and a psychologist, and are truly multidisciplinary in nature.
- Two members of the Centre, Professor Justine Smith and Professor Keryn Williams, joined the University's mentoring Scheme for Early Career Researchers as mentors in 2014.

Goal 2: Recruit and graduate RHD students. Enhance the research environment to attract, retain and increase higher degree research student load.

- *KPI: Recruit one new externally-funded postgraduate student in the next two years and increase the number of PhD students within the Centre by two, subject to available space.* This KPI was met. One new PhD student was recruited in 2013 and two PhD students, Dr Georgia Kaidonis and Dr Tiger Zhou, were awarded externally-funded scholarships.

Goal 3: Compete effectively in the external funding environment and improve national and international recognition. Build links with industry and other external bodies.

- *KPI: Ten percent increase in dollar amount of external grant support over past three years, compared with baseline.* The FCOEVR has met this goal. Baseline research funding totalled \$7,332,369 over 3 years (2008-10). Over 2011-13, we generated AUD\$8,522,022 in competitive external research grant income as Chief Investigators, including from National Category 1 funding bodies, especially from the NHMRC.
- *KPI: Increase the number of research collaborations, compared with baseline.* The FCOEVR has met this goal. The Centre now manages over 88 active collaborations, a substantial increase from baseline. The majority are academic collaborations, but we also collaborate with industry partners (e.g. CSL Ltd/Bio21), with government (e.g. Royal Society for the Blind) and community groups (e.g. Keratoconus Australia).
- *KPI: Increase members' attendance as invited speakers at national and international conferences.* The FCOEVR has met this goal. At baseline (2008-2010), members had presented 65 invited talks at international and national conferences. Over the past three years, the number has grown to 85 such invitations.
- *KPI: Increase membership of key committees and societies by 5%, compared with baseline.* At baseline, memberships of key committees and societies totalled 39. Currently, members belong to, or serve upon, over 100 such committees and societies. Student members belong to additional societies. The FCOEVR has thus met its KPI of a 5% increase over the past 3 years. Of note, Professor Smith was President of the Association for Research in Vision and Ophthalmology (ARVO), the premier international body representing eye and vision researchers, during 2013-4.
- *KPI: Increase industry contracts by two over three years.* The FCOEVR has *not* met this goal. *One* new contract is in place, with Circadian Ltd. Some additional contracts have been generated (e.g. with SpecSavers), but these are for purposes of clinical care or teaching, rather than research.

Goal 4: Contribute to the social, cultural and economic wellbeing of the community.

- *KPI: Organise one Evidence-Based Ophthalmology Workshop per year.* The FCOEVR organised an Evidence-based Ophthalmology Workshop in Hobart in 2013 and have already run an Evidence-based Optometry Workshop in Adelaide in 2014. The purpose of these translational meetings is to encourage ophthalmologists, optometrists and others involved in eye care to consider everyday clinical problems in the context of evidence-based research, and to provide practical and applied instruction in its principles.
- *KPI: Increase collaborations with external researchers in areas of community need, compared with baseline.* The FCOEVR has met this goal by establishing new collaborations with bodies such as the Royal Society for the Blind, Keratoconus Australia, and the Multiple Sclerosis (MS) Society.
- *KPI: Centre seminar program, held weekly during University semesters, should involve speakers from outside the Centre and focus on interdisciplinary research.* A summary of Centre Seminar Program for 2013 is attached (Appendix 8). The Program operates from March to December each year during University semesters and includes both internal and external speakers. The aim is to maintain links between the research and clinical arms of the Centre, and to ensure members are keep up to-date with developments within and outside their professional fields.

Goal 5: Achieve sustainability in the broad sense (not necessarily financial) and return value to the University on its investment.

- The FCOEVR is a vibrant and productive group that has brought far more into Flinders University in terms of RIBG, SRE, RTS, patent income and the infrastructure levy, than it has cost in terms of centrally-provided Research Development Officer (RDO) salaries.
- We have increased the University's reputation through our publications, presentations, collaborations, awards, services to our discipline, and most recent ERA success (ERA = 5).

Governance

Governance of the Centre operates through an Executive Group comprising Professor Keryn Williams (contact for the University), A/Professor Richard Mills, A/Professor Jamie Craig, Professor Konrad Pesudovs, Professor Justine Smith and A/Professor Celia Chen, supported by the Centre's senior Research Development Officer (RDO), Ms Deb Sullivan. The FCOEVR Executive Group meets formally twice yearly, but is convened more frequently on an ad hoc basis when circumstances require. FCOEVR Executive Group meeting Minutes can be made available for review at request. FCOEVR Executive Group meetings are minuted and are available for review if required by the Deputy Vice-Chancellor (Research).

Awards, Outreach, Notable Collaborations, and Opportunities Generated

Overview

Since its inception in early 2005, our Centre has generated a high profile, many publications and substantial income for the University. We are at the forefront of the fight against blinding eye disease. A powerful mechanism for translation is to keep research anchored in clinical practice, and a distinctive feature of our Centre has been the close integration of laboratory and clinical research, which has been a key factor in our success. Our results in the most recent ERA round (a score of 5, equivalent to "well world average") for Ophthalmology and Optometry indicate that we are performing well.

External fellowships



Externally-funded competitive research fellowships at all levels speak to external recognition of excellence. Professor Keryn Williams' NHMRC Principal Research Fellowship was renewed again for 2011-2015. Professor Jamie Craig's NHMRC Practitioner Fellowship was renewed again for 2013-2017. Professor Justine Smith won an ARC Future fellowship for 2014-18.

Meetings organised

Australia and New Zealand Cornea Society Meetings



In March 2013 the Centre organised and hosted the 30th Australia and New Zealand Cornea Society Meeting. This national meeting attracts approximately 100 delegates and in 2013 hosted an international speaker, Dr Frank Larkin, University College, London. A/Professor Richard Mills was the convenor for 2013 and the meeting was organised by RDO Ms Deb Sullivan.

World Glaucoma Week 2014

Coinciding with World Glaucoma Week 2014, the FCOEVR's ANZ Registry of Advanced Glaucoma held an event at Flinders Medical Centre in March 2014 to celebrate the week. Patients were personally invited to attend along with their family members and friends. Prof Jamie Craig presented the results from the Registry and discussed family implications of genetic testing for glaucoma. The event was very successful and received very positive feedback from those attending.

Evidence-Based Ophthalmology Workshop

Under the auspices of FOCEVR, the Evidence-Based Ophthalmology Workshop was held once again in November, 2013 to coincide with the RANZCO's 45th Annual Scientific Congress being held in Hobart. Invited speakers included Winthrop Professor Elizabeth Rakoczy (University of WA & Lions Eye Institute), Dr Con Petsoglou (University of Sydney), Dr Michael Lawless (Vision Eye Institute) and A/Professor Brendan Vote (University of Tasmania).

At the request of the Tasmanian Branch of RANZCO, a joint meeting with our group with the theme of Evidence-Based Ophthalmology has been confirmed for June 2014.

Evidence-Based Optometry Conference



The Evidence-Based Optometry Conference was held for the first time in Adelaide in April 2014. Hosted by Professor Konrad Pesudovs, the invited speakers included Dr Laura Downie (Dept of Optometry and Vision Sciences, University of Melbourne), Dr Isabelle Jalbert (School of Optometry and Vision Science, University of NSW) and Mr Brad Kirkwood (practising Optometrist, Queensland). This was a successful meeting and it is planned

for the conference to become an annual event with discussion already underway for a meeting in 2015.

Ophthalmology Seminar Program

The Ophthalmology Seminar Program is operated by the Centre from March to December each year during University semesters. The program includes both internal and external speakers. The aim is to maintain links between the research and clinical arms of the Centre, and to ensure members are kept up to-date with developments within and outside their professional fields. The Seminar Program schedules for 2013 and 2014 can be found in Appendix 8.

Other Notable Achievements

Flinders Vision



The Flinders Vision clinic opened early in 2014 and forms part of Optometry and Vision Science. With the aim to provide the best possible eye care by using the latest technology, it is the only optometry clinic in South Australia that provides access to such a comprehensive range of imaging and diagnostic equipment in one location. It will provide additional opportunities for research.

Flinders Undergraduate Teaching

The FCOEVR is a research centre, but members, including research-only and clinical staff, provide teaching to undergraduate students of Flinders University. In 2013-2014, we provided undergraduate teaching to students across years 2, 3 and 4 of the graduate entry MD programme and years 4 and 5 of the MOptom programme. In the medical course, this included the entirety of ocular anatomy, visual physiology and clinical ophthalmology teaching contained within the course, to the undergraduate students via lectures, a PBL tutorial, a clinical skills-based eye and vision practical, ophthalmology clinical skills tutorials, clinical placement of all Adelaide-based year 3 students, written and practical examination questions in ophthalmology and visual science, and 6 week clinical attachments and research electives for year 4 students and external Australian or international medical students within the Department of Ophthalmology.

Commencing early 2013, we also designed and ran the year 4 Optometry topic “Ophthalmology”, comprising 57 lectures (55 of which were conducted by members of FCOEVR), allocation of students to the Ophthalmology Department weekly teaching sessions, and written and practical examinations. A number of FCOEVR staff have also contributed to teaching in the MOptom programme at years 2, 3 and 4, across a number of different topics, including Immunology and Microbiology, Skills for Medical Scientists 2, Communication for the Consulting Room and Knowledge of Health & Illness for Optometrists 2. Commencing early 2014, we have accepted the entire cohort of final year Optometry students on 2 week clinical attachments in the Eye Clinic.

Budget Acquittal December 2013 and June 2014

December 2013

	<i>Carry Forward</i>	<i>Income</i>	<i>Expenses</i>	<i>Commitment</i>	<i>Surplus / (Deficit)</i>
Cost Centre: 519 (Flinders Centre for Ophthalmology, Eye & Vision Research)					
<u>Project: 36295 (2010/15 RIBG/ASRI Flinders Cntr Ophthalmology Eye Vision Rsch)</u>					
Source: 010 (Infrastructure Funds)					
Income					
0986 - Intra-Faculty or Intra-Portfolio Transfer	0	20,000	0	0	
9298 - Funds Brought Forward	13,924	0	0	0	
TOTAL INCOME & CARRY FORWARD	13,924.40	20,000.00	0.00	0.00	33,924.40
Salaries					
1292 - Admin Contract staff transfers	0	0	(26,820)	0	
1800 - Severance Levy (Admin Contract)	0	0	578	0	
1801 - Salaries (Admin Contract)	0	0	54,174	0	
1803 - Payroll Tax (Admin Contract)	0	0	3,491	0	
1804 - Superannuation (Admin Contract)	0	0	8,363	0	
1805 - Award/SGC Super (Admin Contract)	0	0	1,792	0	
1806 - Workers Comp (Admin Contract)	0	0	807	0	
1807 - Annual Leave Paid (Admin Contract)	0	0	4,224	0	
1808 - Long Service Leave Paid (Admin Contract)	0	0	1,964	0	
1814 - Admin Contract LSL Levy	0	0	380	0	
Total Salaries	0.00	0.00	48,951.92	0.00	(48,951.92)
Non Salaries					
Total Non Salaries	0.00	0.00	0.00	0.00	0.00
TOTAL EXPENDITURE	0.00	0.00	48,951.92	0.00	(48,951.92)
TOTAL	13,924.40	20,000.00	48,951.92	0.00	(15,027.52)

Cost Centre: 519 (Flinders Centre for Ophthalmology, Eye & Vision Research)

Project: 36372 (2010/15 Op Grant ASRI Flinders Cntr Ophthalmology Eye Vision)

Source: 009 ((URB) University Research Budget)

Income					
0987 - Research Budget Transfers	0	100,000	0	0	
9298 - Funds Brought Forward	(39,549)	0	0	0	
TOTAL INCOME & CARRY FORWARD	(39,548.77)	100,000.00	0.00	0.00	60,451.23
Salaries					
1299 - Admin Continuing staff transfers	0	0	(10,173)	0	
1800 - Severance Levy (Admin Contract)	0	0	538	0	
1801 - Salaries (Admin Contract)	0	0	49,645	0	
1803 - Payroll Tax (Admin Contract)	0	0	3,277	0	
1804 - Superannuation (Admin Contract)	0	0	7,807	0	
1805 - Award/SGC Super (Admin Contract)	0	0	1,673	0	
1806 - Workers Comp (Admin Contract)	0	0	753	0	
1807 - Annual Leave Paid (Admin Contract)	0	0	5,113	0	
1808 - Long Service Leave Paid (Admin Contract)	0	0	1,964	0	
1814 - Admin Contract LSL Levy	0	0	357	0	
Total Salaries	0.00	0.00	60,954.57	0.00	(60,954.57)
Non Salaries					
Total Non Salaries	0.00	0.00	0.00	0.00	0.00
TOTAL EXPENDITURE	0.00	0.00	60,954.57	0.00	(60,954.57)
TOTAL	(39,548.77)	100,000.00	60,954.57	0.00	(503.34)

June 2014

	Carry Forward	Income	Expenses	Commitment	Surplus / (Deficit)
Cost Centre: 519 (Flinders Centre for Ophthalmology, Eye & Vision Research)					
Project: 36295 (2010/15 RIBG/ASRI Flinders Cntr Ophthalmology Eye Vision Rsch)					
Source: 010 (Infrastructure Funds)					
Income					
0986 - Intra-Faculty or Intra-Portfolio Transfer	0	20,000	0	0	
9298 - Funds Brought Forward	(15,028)	0	0	0	
TOTAL INCOME & CARRY FORWARD	(15,027.52)	20,000.00	0.00	0.00	4,972.48
Salaries					
1800 - Severance Levy (Admin Contract)	0	0	16	0	
1801 - Salaries (Admin Contract)	0	0	1,420	0	
1803 - Payroll Tax (Admin Contract)	0	0	92	0	
1804 - Superannuation (Admin Contract)	0	0	222	0	
1805 - Award/SGC Super (Admin Contract)	0	0	48	0	
1806 - Workers Comp (Admin Contract)	0	0	21	0	
1807 - Annual Leave Paid (Admin Contract)	0	0	167	0	
1814 - Admin Contract LSL Levy	0	0	10	0	
Total Salaries	0.00	0.00	1,996.74	0.00	(1,996.74)
Non Salaries					
Total Non Salaries	0.00	0.00	0.00	0.00	0.00
TOTAL EXPENDITURE	0.00	0.00	1,996.74	0.00	(1,996.74)
TOTAL	(15,027.52)	20,000.00	1,996.74	0.00	2,975.74

Cost Centre: 519 (Flinders Centre for Ophthalmology, Eye & Vision Research)					
Project: 36372 (2010/15 Op Grant ASRI Flinders Cntr Ophthalmology Eye Vision)					
Source: 009 ((URB) University Research Budget)					
Income					
0987 - Research Budget Transfers	0	100,000	0	0	
9298 - Funds Brought Forward	(503)	0	0	0	
TOTAL INCOME & CARRY FORWARD	(503.34)	100,000.00	0.00	0.00	99,496.66
Salaries					
1800 - Severance Levy (Admin Contract)	0	0	476	499	
1801 - Salaries (Admin Contract)	0	0	44,178	51,257	
1803 - Payroll Tax (Admin Contract)	0	0	2,802	2,892	
1804 - Superannuation (Admin Contract)	0	0	6,773	6,992	
1805 - Award/SGC Super (Admin Contract)	0	0	1,451	1,498	
1806 - Workers Comp (Admin Contract)	0	0	653	674	
1807 - Annual Leave Paid (Admin Contract)	0	0	3,381	0	
1808 - Long Service Leave Paid (Admin Contract)	0	0	821	0	
1814 - Admin Contract LSL Levy	0	0	305	315	
Total Salaries	0.00	0.00	60,840.30	64,128.14	(124,968.44)
Non Salaries					
2001 - Airline (Domestic)	0	0	1,607	0	
2051 - Light Meals/Snacks (Non:FBT)	0	0	13	0	
2401 - Advertising : Courses/Other	0	0	227	0	
2601 - Hire/Lease	0	0	2,588	0	
3201 - Stationery	0	0	174	0	
3301 - Postage/Freight	0	0	33	0	
Total Non Salaries	0.00	0.00	4,643.18	0.00	(4,643.18)
TOTAL EXPENDITURE	0.00	0.00	65,483.48	64,128.14	(129,611.62)
TOTAL	(503.34)	100,000.00	65,483.48	64,128.14	(30,114.96)

Viability/Financial Sustainability of FCOEVR

Flinders University has supported the Centre over the past six years (2009-14) through providing funding for Ms Cazneau (0.7 FTE), and since 2010, Ms Sullivan (1.0 FTE). These appointments have been essential to the on-going success of FCOEVR. The sustained input of these RDOs has been largely responsible for our increased (and ever-increasing) research performance and reputation, and clearly contributed to Flinders University's discipline of Ophthalmology and Optometry receiving a 2010 ERA ranking of 4 and a ranking of 5 in the most recent round.

The success of FCOEVR can be attributed, however, to a number of additional factors. The FCOEVR is an excellent example of the value-adding that provision of support (financial and in-kind) from the Office of the DVC(R) can generate. The ability of Centre members, in particular our clinician-scientists, to embrace and promote the concept of the Centre has created vigour and new opportunities for funding and partnerships. From its original establishment as the Eye and Vision ASRI to the current FCOEVR, the Centre has proven to be viable and has been increasing in size and stature. Its success is best measured against the key academic performance indicators (KPIs) that were outlined for the Eye and Vision ASRI in 2007-8. As shown herein, almost all KPIs have been met, and have far exceeded expectation in some instances. When measured against the baseline performance of the Department in 2007, there is evidence of well-managed growth in terms of academic measures of research productivity. However, we consider that our research focus on eye disease, and our ability to translate our research to meet patient and community needs, is equally as important.

The Operating Budget for the Department of Ophthalmology does not contain an allocation for research support. The Department of Ophthalmology is a joint University and Flinders Medical Centre Department and historically, administrative support was provided via a hospital-funded position. However, administrative support to FUSA researchers was very limited and with the many changes occurring in SA Health, this position disappeared over a decade ago. The majority of external grants do not provide for research management support and this, along with the fact that the Centre does not receive performance-based funding from the School of Medicine, has made it difficult to appoint research administrative staff. Thus, unlike some other Units, we do not see financial rewards for student load, completions, publications, or grant income, other than provided competitively through the FHS Research Committee to individual Centre members through the annual small grants round.

For continued growth and on-going success, the FCOEVR will be reliant upon on-going funding from the Office of the DVC(R) after the current funding agreement ceases in December 2015. This would enable the continuation of contracts for Ms Deb Sullivan and Ms Anne Cazneau who, as previously noted, are essential to the operation and success of the Centre.

Appendix 1

Higher Research Degree completions 2013-14, current load and mentoring

In 2013, the following students were awarded the degree of PhD:

- Dr Mona Awadalla
- Dr Alison Clarke



The following Honours student completed their candidature:

- Ms Ha Ae Bae

Our current Master student is:

- Dr Jude Fitzgerald

Our current PhD students, enrolled through Flinders University, are:

- Ms Alpana Dave (supported by a FURS)
- Mr Yazad Irani (supported by a FURS)
- Ms Shari Javadiyan (supported by a FURS)
- Mr Abraham Kuot (supported by a FURS)
- Dr Georgia Kaidonis (supported by FURS)
- Dr Tiger Zhou (supported by Lions Medical Research Foundation Scholarship)



Additional students are being co-supervised by Centre members.



Appendix 2 Publications, 2013-2014

Publications in refereed journals, 2013

**student authorship*

1. **Khadka, J., McAlinden, C., Craig, J. E.**, Fenwick, E. K., Lamoureux, E. L., **Pesudovs, K.** Identifying content for the glaucoma-specific item bank to measure quality-of-life parameters. *Journal of Glaucoma* 2013 (Epub ahead of print April 2).
2. ***Kaidonis, G., Abhary, S.**, Daniell, M., Gillies, M., Fogarty, R., Petrovsky, N., Jenkins, A., Essex, R., Chang, J. H., Pal, B., Hewitt, A. W., **Burdon, K. P., Craig, J. E.** Genetic study of Diabetic Retinopathy: Recruitment methodology and analysis of baseline characteristics. *Clin Experiment Ophthalmol* 2013 (Epub ahead of print 30 Sept 2013).
3. ***Appleby, S. L., Irani, Y., Mortimer, L. A., Brereton, H. M., Klebe, S., Keane, M. C.**, Cowan, P. J., **Williams, K. A.** Co-expression of a scFv antibody fragment and a reporter protein using lentiviral shuttle plasmid containing a self-processing furin-2A sequence. *Journal of Immunological Methods* 2013;397(1-2):61-65.
4. ***Appleby, S. L., Jessup, C. F., Mortimer, L. A., Kirk, K., Brereton, H. M., Coster, D. J., Tan, C. K., Williams, K. A.** Expression of an anti-CD4 single-chain antibody fragment from the donor cornea can prolong corneal allograft survival in inbred rats. *Br J Ophthalmol* 2013;97(1):101-5.
5. ***Awadalla, M. S., Thapa, S. S., Hewitt, A. W., Craig, J. E., Burdon, K. P.** Association of eNOS polymorphisms with primary angle-closure glaucoma. *Investigative Ophthalmology and Visual Science* 2013;54(3):2108-14.
6. ***Awadalla, M.**; Thapa, SS, ;, Hewitt, A. W., **Burdon, K. P., Craig, J. E.** Association of genetic variants with primary angle-closure glaucoma in two different populations. *PLoS One* 2013;8(6):e67903.
7. **Bae, H. A., Mills, R. A., Lindsay, R. G., Phillips, T., Coster, D. J., Mitchell, P., Wang, J. J., Craig, J. E., Burdon, K. P.** Replication and meta-analysis of candidate loci identified variation at RAB3GAP1 associated with keratoconus. *Invest. Ophthalmol. Vis. Sci.* 2013;54(7):5132-35.
8. Bharadwaj, A. S., **Appukuttan, B.**, Wilmarth, P. A., Pan, Y., **Stempel, A. J.**, Chipps, T. J., Benedetti, E. E., Zamora, D. O., Choi, D., David, L. L., **Smith, J. R.** Role of the retinal vascular endothelial cell in ocular disease. *Progress in Retinal and Eye Research* 2013;32(1):102-80 (Review).
9. Bharadwaj, A. S., Schewitz-Bowers, L. P., Wei, L., Lee, R. W., **Smith, J. R.** Intercellular adhesion molecule 1 mediates migration of Th1 and Th17 cells across human retinal vascular endothelium. *Invest Ophthalmol Vis Sci* 2013;54(10):6917-25.
10. Bourne, R. R. A., Stevens, G. A., White, R. A., Smith, J. L., Flaxman, S. R., Price, H., Jonas, J. B., Keeffe, J., Leasher, J., Naidoo, K., **Pesudovs, K.**, Resnikoff, S., Taylor, H. R. Causes of vision loss worldwide, 1990-2010: A systematic analysis. *Lancet Global Health* 2013;1(6):e339-e49.
11. Bourne, R., Price, H., Taylor, H., Leasher, J., Keeffe, J., Glanville, J., Sieving, P. C., Khairallah, M., Wong, T. Y., Zheng, Y., Mathew, A., Katiyar, S., Mascarenhas, M., Stevens, G. A., Resnikoff, S., Gichuhi, S., Naidoo, K., Wallace, D., Kymes, S., Peters, C., **Pesudovs, K.**, Braithwaite, T., Limburg, H. New systematic review methodology for visual impairment and

- blindness for the 2010 global burden of disease study. *Ophthalmic Epidemiology* 2013;20(1):33-39.
12. **Burdon, K. P.**, Vincent, A. L. Insights into keratoconus from a genetic perspective. *Clinical and Experimental Optometry* 2013;96(2):146-54.
 13. Butler, N. J., Furtado, J. M., Winthrop, K. L., **Smith, J. R.** Ocular toxoplasmosis II: Clinical features, pathology and management. *Clin. Exp. Ophthalmol.* 2013;41(1):95-108.
 14. Cabot, F., Saad, A., **McAlinden, C.**, Haddad, N. M., Grise-Dulac, A., Gatinel, D. Objective assessment of crystalline lens opacity level by measuring ocular light scattering with a double-pass system. *American Journal of Ophthalmology* 2013;155(4):629-35.e2.
 15. Cheng, C. Y., Schache, M., Ikram, M. K., et. al., **Burdon, K. P., Craig, J. E.**, et. al., Baird, P. N. Nine Loci for Ocular Axial Length Identified through Genome-wide Association Studies, Including Shared Loci with Refractive Error. *Am J Hum Genet* 2013;93(2):264-77.
 16. Chidlow, G., Wood, J. P., **Sharma, S.**, Dimasi, D. P., Burdon, K. P., Casson, R. J., **Craig, J. E.** Ocular Expression and Distribution of Products of the POAG-Associated Chromosome 9p21 Gene Region. *PLoS One* 2013;8(9):e75067.
 17. Chipps, T. J., **Appukuttan, B.**, Pan, Y., **Smith, J. R.** CD44 isoforms in human retinal and choroidal endothelial cells. *Graefes's Archive for Clinical and Experimental Ophthalmology* 2013;251(4):1245-46.
 18. **Cugati, S.**, Varma, D. D., **Chen, C. S.**, Lee, A. W. Treatment options for central retinal artery occlusion. *Current Treatment Options in Neurology* 2013;15(1):63-77.
 19. ***Dave, A.**, Laurie, K. J., Staffieri, S.E., **Taranath, D.**, Mackey, D, Mitchell, P., Wang, J.J., **Craig, J.E., Burdon, K.P., Sharma, S.** Mutations in the EPHA2 gene are a major contributor to inherited cataracts in South-Eastern Australia. *PLoS One* 2013;8(8):e72518.
 20. Fenwick, E. K., **Pesudovs, K., Khadka, J.**, Rees, G., Wong, T. Y., Lamoureaux, E. L. Evaluation of item candidates for a diabetic retinopathy quality of life item bank. *Qual Life Res* 2013;22(7):1851-8.
 21. Furtado, J. M., Winthrop, K. L., Butler, N. J., **Smith, J. R.** Ocular toxoplasmosis I: Parasitology, epidemiology and public health. *Clin. Exp. Ophthalmol.* 2013;41(1):82-94.
 22. Furtado, J. M., **Ashander, L. M.**, Mohs, K., Chipps, T. J., **Appukuttan, B., Smith, J. R.** Toxoplasma gondii Migration within and Infection of Human Retina. *PLoS ONE* 2013;8(2):e54358. doi: 10.1371/journal.pone.0054358. Epub 2013 Feb 21.
 23. Greenwell, T. H., **Loh, R. S.**, Chegade, M., **Mills, R. A.** Misdiagnosis of orthokeratology-related Acanthamoeba keratitis as herpes simplex virus keratitis. *Clin. Exp. Ophthalmol.* 2013;41(4):418-20.
 24. **Hammond, D. S.**, Wallman, J., Wildsoet, C. F. Dynamics of active emmetropisation in young chicks - influence of sign and magnitude of imposed defocus. *Ophthalmic and Physiological Optics* 2013;33(3):215-26.
 25. Harrer, A., Gerstmeyer, K., Hirschall, N., **Pesudovs, K.**, Lundström, M., Findl, O. Impact of bilateral cataract surgery on vision-related activity limitations. *J. Cataract. Refract. Surg.* 2013;39(5):680-85.
 26. Hirneiss, C., Reznicek, L., Vogel, M., **Pesudovs, K.** The impact of structural and functional

- parameters in glaucoma patients on patient-reported visual functioning. *PLoS ONE* 2013;8(12):e80757.
27. ***Irani, Y.**, McInnes, S. J. P., **Brereton, H. M.**, **Williams, K. A.**, Voelcker, N. H. Porous silicon as a scaffold for rat oral mucosal epithelial cells and transfer to the eye. *European Cells and Materials* 2013;26(SUPPL.6):54.
 28. ***Keane, M. C.**, **Lowe, M. T.**, **Coster, D. J.**, Pollock, G. A., **Williams, K. A.** The influence of Australian eye banking practices on corneal graft survival. *Medical Journal of Australia* 2013;199(4):275-79.
 29. **Khadka, J.**, **McAlinden, C.**, **Pesudovs, K.** Quality assessment of ophthalmic questionnaires: Review and recommendations. *Optom. Vis. Sci.* 2013;90(8):720-44.
 30. **Khadka, J.**, **Pesudovs, K.** Rasch modified NEI VF-11R or actually the VF-11R? *J. Cataract. Refract. Surg.* 2013;39(7):1129.
 31. Ku, J. Y., **Landers, J.**, Henderson, T., **Craig, J. E.** The reliability of single-field fundus photography in screening for diabetic retinopathy: The central Australian ocular health study. *Medical Journal of Australia* 2013;198(2):93-95.
 32. **Landers, J.**, Henderson, T. High levels of uncorrected presbyopia among indigenous Australians: A concern and an opportunity. *Clin. Exp. Ophthalmol.* 2013;41(3):219-20.
 33. **Landers, J.**, Henderson, T., **Craig, J. E.** Incidence of visual impairment due to cataract, diabetic retinopathy and trachoma in indigenous Australians within central Australia: The Central Australian Ocular Health Study. *Clin. Exp. Ophthalmol.* 2013;41(1):50-55.
 34. *Laurie, K. J., **Dave, A.**, Straga, T., Souzeau, E., Chataway, T., Sykes, M. J., Casey, T., Teo, T., Pater, J., **Craig, J. E.**, **Sharma, S.**, **Burdon, K. P.** Identification of a Novel Oligomerization Disrupting Mutation in CRYAA Associated with Congenital Cataract in a South Australian Family. *Human Mutation* 2013;34(3):435-38.
 35. *Lee, A. W., **Chen, C. S.**, **Cugati, S.**, Varma, D. Reply: 'Central retinal artery occlusion and cerebral stroke'. *Eye (Basingstoke)* 2013;27(12):1422-23.
 36. Lee, S. T., Gupta, S. R., Richards, A. B., Suhler, E. B., **Smith, J. R.**, Flaxel, C. J. The use of vascular endothelial growth factor inhibitor for choroidal neovascularization complicating posterior uveitis in eyes with fluocinolone acetonide implants. *Retinal Cases and Brief Reports* 2013;7(1):35-40.
 37. Lu, Y., Vitart, V., **Burdon, K. P.**, Khor, C. C., Bykhovskaya, Y., Mirshahi, A., Hewitt, A. W., Koehn, D., Hysi, P. G., Ramdas, W. D., Zeller, T., Vithana, E. N., Cornes, B. K., Tay, W. T., Tai, E. S., Cheng, C. Y., Liu, J., Foo, J. N., Saw, S. M., Thorleifsson, G., Stefansson, K., Dimasi, D. P., **Mills, R. A.**, et. al., **Craig, J. E.**, MacGregor, S., Wong, T. Y. Genome-wide association analyses identify multiple loci associated with central corneal thickness and keratoconus. *Nature Genetics* 2013;45(2):155-63.
 38. **McAlinden, C.**, Saldanha, M., Laws, D. Evisceration for the management of ocular trauma. *BMJ case reports* 2013; Oct 30; doi: 10.1136/bcr-2013-201235
 39. **McAlinden, C.**, Skiadaresi, E., Gatinel, D., Cabot, F., Huang, J., **Pesudovs, K.** The quality of vision questionnaire: Subscale interchangeability. *Optom. Vis. Sci.* 2013;90(8):760-64.
 40. *McInnes, S. J. P., **Irani, Y.**, Lad, H. R., **Williams, K. A.**, Voelcker, N. H. Porous silicon films and microparticles as a vehicle for the loading and extended release of infliximab to the eye.

European Cells and Materials 2013;26(SUPPL.6):98.

41. Murray, CJL, Vos T, Lozano R, et. al., **Pesudovs K**, et. al., Zheng Z-J, Zonies D & Lopez AD. Disability-adjusted life years (DALYs) for 291 diseases and injuries in 21 regions, 1990-2010: a systematic analysis for the Global Burden of Disease Study 2010. *The Lancet* 2013; 380(9859), 2197-2223.
42. Oliver, V. F., Franchina, M., Jaffe, A. E., Branham, K. E., Othman, M., Heckenlively, J. R., Swaroop, A., Campochiaro, B., Vote, B. J., **Craig, J. E.**, Saffery, R., Mackey, D. A., Qian, J., Zack, D. J., Hewitt, A. W., Merbs, S. L. Hypomethylation of the IL17RC promoter in peripheral blood leukocytes is not a hallmark of age-related macular degeneration. *Cell reports* 2013;5(6):1527-35.
43. **Pesudovs, K.**, Lamoureux, E. L., Lundström, M., Massof, R. W., Ratcliffe, J., Rubin, G. S. Measuring the patient's perspective. *Optom. Vis. Sci.* 2013;90(8):717-19.
44. Ronci, M., **Sharma, S., Martin, S., Craig, J. E.**, Voelcker, N. H. MALDI MS imaging analysis of apolipoprotein E and lysyl oxidase-like 1 in human lens capsules affected by pseudoexfoliation syndrome. *Journal of Proteomics* 2013;82:27-34.
45. Ryan, B., **Khadka, J.**, Bunce, C., Court, H. Effectiveness of the community-based Low Vision Service Wales: A long-term outcome study. *Br. J. Ophthalmol.* 2013;97(4):487-91.
46. Sabour-Pickett, S., Loughman, J., Nolan, J. M., Stack, J., **Pesudovs, K.**, Meagher, K. A., Beatty, S. Visual performance in patients with neovascular age-related macular degeneration undergoing treatment with intravitreal ranibizumab. *Journal of Ophthalmology* 2013;:268438. doi: 10.1155/2013/268438. Epub 2013 Feb 21.
47. Salomon, JA, Vos T, Hogan DR, et. al., **Pesudovs K**, Phillips D, Pourmalek F, Prince M, Rehm JT, Remuzzi G, Richardson K, Room R, Saha S, Sampson U, Sanchez-Riera L, Segui-Gomez M, Shahrzad S, Shibuya K, Singh D, Sliwa K, Smith E, Soerjomataram I, Steiner T, Stolk WA, Stovner LJ, Sudfeld C, Taylor HR, Tleyjeh IM, van der Werf MJ, Watson WL, Weatherall DJ, Weintraub R, Weisskopf MG, Whiteford H, Wilkinson JD, Woolf AD, Zheng Z-J & Murray CJL. Common values in assessing health outcomes from disease and injury: disability weights measurement study for the Global Burden of Disease Study 2010. *The Lancet* 2013; 380(9859), 2129-2143.
48. Soong, T. K., **Saha, N.** Comment on 'Reduction of thickness of ganglion cell complex after internal limiting membrane peeling during vitrectomy for idiopathic macular hole'. *Eye (Basingstoke)* 2013;27(3):455.
49. ***Souzeau, E., Burdon, K. P.**, Dubowsky, A., Grist, S., **Usher, B., Fitzgerald, J. T., Crawford, A.**, Hewitt, A. W., Goldberg, I., **Mills, R. A.**, Ruddle, J. B., **Landers, J.**, Mackey, D. A., **Craig, J. E.** Higher prevalence of myocilin mutations in advanced glaucoma in comparison with less advanced disease in an australasian disease registry. *Ophthalmology* 2013;120(6):1135-43.
50. Stevens, G. A., White, R. A., Flaxman, S. R., Price, H., Jonas, J. B., Keeffe, J., Leasher, J., Naidoo, K., **Pesudovs, K.**, Resnikoff, S., Taylor, H., Bourne, R. R. A. Global prevalence of vision impairment and blindness: Magnitude and temporal trends, 1990-2010. *Ophthalmology* 2013;120(12):2377-84.
51. Suhler, E. B., Lowder, C. Y., Goldstein, D. A., Giles, T., Lauer, A. K., Kurz, P. A., Pasadhika,

- S., Lee, S. T., De Saint Sardos, A., Butler, N. J., Tessler, H. H., **Smith, J. R.**, Rosenbaum, J. T. Adalimumab therapy for refractory uveitis: Results of a multicentre, open-label, prospective trial. *Br. J. Ophthalmol.* 2013;97(4):481-86.
52. Taylor, H. R., Jonas, J. B., Keeffe, J., Leasher, J., Naidoo, K., **Pesudovs, K.**, Resnikoff, S. Disability weights for vision disorders in Global Burden of Disease study. *The Lancet* 2013;381(9860):23.
53. ***Tea, M.**, Michael, M. Z., **Brereton, H. M.**, **Williams, K. A.** Stability of small non-coding RNA reference gene expression in the rat retina during exposure to cyclic hyperoxia. *Molecular Vision* 2013;19:501-08.
54. Tug, E., Dilek, N. F., Javadiyan, S., **Burdon, K. P.**, Percin, F. E. A Turkish family with Nance-Horan syndrome due to a novel mutation. *Gene* 2013;525(1):141-45.
55. Ullrich, K., **Taranath, D.**, Casey, T. Can intraoperative use of limbal stay suture in strabismus surgery cause epithelial ingrowth? *Journal of pediatric ophthalmology and strabismus* 2013;50 Online:e21-23.
56. Ullrich, K., **Wells, J.**, Brennan, C., **Craig, J.** Recurrent atypical fibroxanthoma of the limbus. *BMJ Case Reports* 2013:Art. No.: 008762.
57. Ullrich, K., **Saha, N.** Semipermanent eyelash extensions causing bacterial keratitis: A case report. *Canadian Journal of Ophthalmology* 2013;48(3):e50-e51.
58. Van Zyl, L. M., Andrew, N., Chehade, M., Sadlon, T. A., **Badenoch, P. R.** Acanthamoeba lenticulata keratitis in a hard contact lens wearer. *Clin. Exp. Ophthalmol.* 2013;41(8):810-2.
59. Varma, D. D., Cugati, S., Lee, A. W., **Chen, C. S.** A review of central retinal artery occlusion: Clinical presentation and management. *Eye (Basingstoke)* 2013;27(6):688-97.
60. Verhoeven, V. J. M., Hysi, P. G., Wojciechowski, R., et. al., **Burdon, K. P.**, **Craig, J. E.**, et. al., Hammond, C. J. Erratum: Genome-wide meta-analyses of multiancestry cohorts identify multiple new susceptibility loci for refractive error and myopia (Nature Genetics (2013) 45 (314-318)). *Nature Genetics* 2013;45(6):712.
61. Verhoeven, V. J. M., Hysi, P. G., Wojciechowski, R., et. al., **Burdon, K. P.**, **Craig, J. E.**, et. al., Hammond, C. J. Genome-wide meta-analyses of multiancestry cohorts identify multiple new susceptibility loci for refractive error and myopia. *Nature Genetics* 2013;45(3):314-18.
62. Vos, T, Flaxman AD, Naghavi M, et. al., **Pesudovs K**, et. al., Zonies D, Lopez AD & Murray CJL. Years lived with disability (YLDs) for 1160 sequelae of 289 diseases and injuries 1990-2010: a systematic analysis for the Global Burden of Disease Study 2010. *The Lancet* 2013; 380(9859), 2163-2196.
63. ***Williams, K. A.**, **Irani, Y. D.**, **Klebe, S.** Novel therapeutic approaches for corneal disease. *Discovery Medicine* 2013;15(84):291-9.
64. Willoughby, C. E., Lechner, J., Bae, H. A., Guduric-Fuchs, J., Rice, A., Govindarajan, G., Siddiqui, S., Farraj, L. A., Yip, S. P., Yap, M., Das, M., **Souzeau, E.**, **Coster, D.**, **Mills, R. A.**, Lindsay, R., Phillips, T., Mitchell, P., Ali, M., Inglehearn, C. F., Sundaresan, P., **Craig, J. E.**, Simpson, D. A., **Burdon, K. P.** Mutational analysis of MIR184 in sporadic keratoconus and myopia. *Investigative Ophthalmology and Visual Science* 2013;54(8):5266-72.
65. Zamora-Alejo, K. V., Moore, S. P., Parker, D. G. A., **Ullrich, K.**, Esterman, A., Goggin, M.

Objective accommodation measurement of the crystalline HD compared to monofocal intraocular lenses. *J. Refractive Surg.* 2013;29(2):133-39.

Other Publications: Letters, Editorials, Articles, Book Reviews Etc.

1. Taylor HR, Jonas J, Keeffe J, Leasher J, Naidoo K, **Pesudovs K**, Resnikoff S. Disability weights for vision disorders in Global Burdens of Disease study. *Lancet* 2013 Jan 5;381(9860):23. Dec 21. doi:pii: S0140-6736(12)62081-9. [Epub ahead of print]
2. **Khadka J, Pesudovs K**. Rasch modified NEI VF-11R or actually the VF-11R? *J Cataract Ref Surg* 2013;39(7):1129.
3. **Pesudovs K**, Ratcliffe J, Lamoureux EL, Lundström M, Massof RW, Rubin GS. Measuring the patient's perspective. *Optom Vis Sci* 2013 Aug;90(8):717-9.
4. GBD 2010 Country Collaboration. GBD 2010 Country Results: a Global Public Good. *Lancet* 2013;381(9871):965-970.
5. **Smith JR**. A list of the most important papers published in 2012 related to the subspecialty of uveitis for residents. On: ONE Network @ www.aao.org. 10/1/2013.
6. **Smith JR**. Presidents message: Addressing gender inequality will help to strengthen ARVO. ARVONews. Fall 2013.
7. Wang, B. Z., **Taranath, D**. Reply. *Journal of AAPOS* 2013;17(1):116.

Book Chapters

1. Lamoureux E, Fenwick E, **Pesudovs K**. The impact of cataract, diabetic retinopathy, diabetic macular edema; and associated treatment interventions on quality of life. In Scholl, Massof RW, West S eds. *Ophthalmology and the Ageing Society*. Berlin: Springer; 2013, p141-164.
2. Elliott DB, **Pesudovs K**. Variations in appearance of the normal eye. In Elliott DB ed. *Clinical Procedures in Primary Eyecare*. 4th ed. Edinburgh: Elsevier Butterworth Heinemann, 2013, p272-293.
3. Rosenbaum JT, **Smith JR**. Immunologic ocular disease. In: Rich (ed). *Clinical Immunology. Principles and Practice* (4th ed). Philadelphia: Elsevier Saunders 2013; 885-895.

Publications in refereed journals, 2014

****student authorship***

1. **Awadalla, M., KP, Burdon, Souzeau, E., Landers, J., Hewitt, A, Sharma, S., JE, Craig**. A mutation in TMEM98 in a large Caucasian Kindred with Autosomal Dominant Nanophthalmos linked to 17p12-q12. *JAMA Ophthalmol.* 2014 (Epub ahead of print).
2. Forward H, Yazar S, Hewitt AW, Khan J, Mountain JM, **Pesudovs K**, McKnight CM, Tan AX, Pennell C, Mackey DA, Newnham J. Multiple prenatal ultrasound scans and ocular development – 20-year follow-up of a randomised controlled trial. *Ultrasound Obstet Gynecol* 2014 April 30 e-pub ahead of print.
3. Hsu, T. t, **Cugati, S., Craig, J. E., Taranath, D.**, Hodson, T. Spontaneously resolved infantile glaucoma. *Clin. Exp. Ophthalmol.* 2014 (Epub ahead of print).
4. ***Kaidonis, G., Mills, R. A., Landers, J., Lake, S. R., Burdon, K. P., Craig, J. E.** Review of the prevalence of diabetic retinopathy in Indigenous Australians. *Clin Experiment Ophthalmol* 2014 [Epub ahead of print].
5. McCloud, C., Khadka, J., Gilhotra, J. S., **Pesudovs, K**. Divergence in the lived experience of people with macular degeneration. *Optom. Vis. Sci.* 2014. (accepted for publications 14/4/14)

6. **Coster, D. J., Lowe, M. T., Keane, M. C., Williams, K. A.** A Comparison of Lamellar and Penetrating Keratoplasty Outcomes: A Registry Study. *Ophthalmology* 2014 121(5 (May)):979-87.
7. Bourne, R. R. A., Jonas, J. B., Flaxman, S. R., Keeffe, J., Leasher, J., Naidoo, K., Parodi, M. B., **Pesudovs, K.**, Price, H., White, R. A., Wong, T. Y., Resnikoff, S., Taylor, H. R. Prevalence and causes of vision loss in high-income countries and in Eastern and Central Europe: 1990-2010. *Br. J. Ophthalmol.* 2014;98(5):629-38.
8. Crabb, M., Chan, W. O., **Taranath, D.**, Huilgol, S. C. Intense pulsed light therapy (IPL) induced iritis following treatment for a medial canthal capillary malformation. *Australas. J. Dermatol.* 2014.
9. **Crawford, A., Souzeau, E.**, Agar, A., **Ridge, B.**, Dubowsky, A., **Burdon, KP, Craig. JE.** Identification of a novel MYOC mutation, p.Trp373X, in a family with open angle glaucoma. *Gene.* 2014;545(2):271-75.
10. Cugati, S., Gilhotra, J. S., **Lake, S.**, Gordon, D. L. Ocular involvement following Bacillus Calmette-Guerin immunotherapy for bladder carcinoma. *Clin. Exp. Ophthalmol.* 2014 Jul;42(5):494-5. doi: 10.1111/ceo.12252. Epub 2013 Dec 27.
11. Glading, J., **Lake, S., Craig JE,** Supramaniam, D. Delayed onset panuveitis following intravitreal aflibercept injection. 2014;June 11:pii: bcr2013202515.
12. Gyawali, R., Nestha Mohamed, F., Bist, J., Kandel, H., Marasini, S., **Khadka, J.** Compliance and hygiene behaviour among soft contact lens wearers in the Maldives. *Clinical and Experimental Optometry* 2014;97(1):43-7.
13. Jonas, J. B., George, R., Asokan, R., Flaxman, S. R., Keeffe, J., Leasher, J., Naidoo, K., **Pesudovs, K.**, Price, H., Vijaya, L., White, R. A., Wong, T. Y., Resnikoff, S., Taylor, H. R., Bourne, R. R. A. Prevalence and causes of vision loss in central and south Asia: 1990-2010. *Br. J. Ophthalmol.* 2014;98(5):592-98.
14. Kassebaum, N. J., Bertozzi-Villa, A., Coggeshall, M. S., et. al., **Pesudovs, K.**, et. al., Lozano, R. Global, regional, and national levels and causes of maternal mortality during 1990-2013: a systematic analysis for the Global Burden of Disease Study 2013. *The Lancet* 2014. 2014 May 2. doi: 10.1016/S0140-6736(14)60696-6. [Epub ahead of print]
15. **Keane M,** Coster DJ, Ziaei M, **Williams KA.** Deep anterior lamellar keratoplasty versus penetrating keratoplasty for treating keratoconus. *Cochrane Database of Systematic Reviews* 2014, issue 2. Art no.: CD009700. doi: 10.1002/14651858.CD009700.pub2. Review ID: 976811010713423445.
16. Keay, L., Palagyi, A., McCluskey, P., Lamoureux, E., **Pesudovs, K.**, Lo, S., Ivers, R., Boufous, S., Morlet, N., Ng, J. Q., Stapleton, F., Fraser, M., Meuleners, L. Falls in Older people with Cataract, a longitudinal evaluation of impact and risk: The FOCUS study protocol. *Injury Prev.* 2014. Aug;20(4):e7. doi: 10.1136/injuryprev-2013-041124. Epub 2014 Jan 15
17. Keeffe, J., Taylor, H. R., Fotis, K., **Pesudovs, K.**, Flaxman, S. R., Jonas, J. B., Leasher, J., Naidoo, K., Price, H., White, R. A., Wong, T. Y., Resnikoff, S., Bourne, R. R. A. Prevalence and causes of vision loss in Southeast Asia and Oceania: 1990-2010. *Br. J. Ophthalmol.* 2014;98(5):586-91.

18. **Khadka J**, Huang J, Mollazadegan K, Gao R, Chen H, Zhang S, Wang Q, **Pesudovs K**. Translation, cultural adaptation and Rasch analysis of the Visual Function (VF-14) questionnaire. *Invest Ophthalmol Vis Sci* 2014 Jun 10. pii: IOVS-14-14017. doi: 10.1167/iovs.14-14017. [Epub ahead of print]
19. Khairallah, M., Kahloun, R., Flaxman, S. R., Jonas, J. B., Keeffe, J., Leasher, J., Naidoo, K., **Pesudovs, K.**, Price, H., White, R. A., Wong, T. Y., Resnikoff, S., Taylor, H. R., Bourne, R. R. Prevalence and causes of vision loss in North Africa and the Middle East: 1990-2010. *Br. J. Ophthalmol.* 2014;98(5):605-11.
20. **Klebe, S.**, Callahan, T., Power, J. H. T. Peroxiredoxin I and II in Human Eyes: Cellular Distribution and Association with Pterygium and DNA Damage. *J. Histochem. Cytochem.* 2014;62(1):85-96.
21. Khong, J. J., Goldstein, R. F., Sanders, K. M., Schneider, H., Pope, J., **Burdon, K. P.**, **Craig, J. E.**, Ebeling, P. R. Serum selenium status in Graves' disease with and without orbitopathy: a case-control study. *Clinical endocrinology* 2014 (Epub ahead of print Jan 2014);80(6):905-10.
22. ***Kuot, A.**, **Mills, R.**, **Craig, J. E.**, **Sharma, S.**, **Burdon, K. P.** Screening of the COL8A2 gene in an Australian family with early-onset Fuchs' endothelial corneal dystrophy. *Clin. Exp. Ophthalmol.* 2014;42(2):198-200.
23. Larkin, K. L., Saboo, U. S., Comer, G. M., Forooghian, F., Mackensen, F., Merrill, P., Sen, H. N., Singh, A., Essex, R. W., **Lake, S.**, Lim, L. L., Vasconcelos-Santos, D. V., Foster, C. S., Wilson, D. J., **Smith, J. R.** Use of intravitreal rituximab for treatment of vitreoretinal lymphoma. *Br. J. Ophthalmol.* 2014;98(1):99-103.
24. Leasher, J. L., Lansingh, V., Flaxman, S. R., Jonas, J. B., Keeffe, J., Naidoo, K., **Pesudovs, K.**, Price, H., Silva, J. C., White, R. A., Wong, T. Y., Resnikoff, S., Taylor, H. R., Bourne, R. R. A. Prevalence and causes of vision loss in Latin America and the Caribbean: 1990-2010. *Br. J. Ophthalmol.* 2014;98(5):619-28.
25. Leblanc, S. K., **Taranath, D.**, Morris, S., Barnett, C. P. Multisegment coloboma in a case of Marfan syndrome: Another possible effect of increased TGF β signaling. *Journal of AAPOS* 2014;18(1):90-92.
26. **McAlinden, C.** The importance of doctor-Patient communication. *Br. J. Hosp. Med.* 2014;75(2):64-65.
27. **McAlinden, C.** Selective laser trabeculoplasty (SLT) vs other treatment modalities for glaucoma: Systematic review. *Eye (Basingstoke)* 2014;28(3):249-58.
28. **Mills, R. A.**, **Klebe, S.**, **Coster, D. J.**, **Williams, K. A.** Comparative Outcomes of Penetrating and Component Endothelial Cell Corneal Allografts in Outbred Sheep. *Cell transplantation* 2014;23(1):144-8.
29. Mollazadegan, K., Huang, J., **Khadka, J.**, Wang, Q., Yang, F., Gao, R., **Pesudovs, K.** Cross-cultural validation of the National Eye Institute Visual Function Questionnaire. *J. Cataract. Refract. Surg.* 2014;40(5):774-84.
30. Momeni-Moghaddam, H., **McAlinden, C.**, Azimi, A., Sobhani, M., Skiadaresi, E. Comparing accommodative function between the dominant and non-dominant eye. *Graefe's Archive for*

Clinical and Experimental Ophthalmology 2014;252(3):509-14.

31. Murray CJ, Ortblad KF, Guinovart C, et. al., **Pesudovs K**, et. al., Zou XN, Lopez AD, Vos T. Global, regional, and national incidence and mortality for HIV, tuberculosis, and malaria during 1990-2013: a systematic analysis for the Global Burden of Disease Study 2013. *Lancet*. 2014 Jul 21. doi: 10.1016/S0140-6736(14)60844-8. [Epub ahead of print]
32. Naidoo, K., Gichuhi, S., Basáñez, M. G., Flaxman, S. R., Jonas, J. B., Keeffe, J., Leasher, J. L., **Pesudovs, K.**, Price, H., Smith, J. L., Turner, H. C., White, R. A., Wong, T. Y., Resnikoff, S., Taylor, H. R., Bourne, R. R. A. Prevalence and causes of vision loss in sub-Saharan Africa: 1990-2010. *Br. J. Ophthalmol.* 2014;98(5):612-17.
33. Ng, S. K., Casson, R. J., **Burdon, K. P., Craig, J. E.** Chromosome 9p21 primary open-angle glaucoma susceptibility locus: A review. *Clin. Exp. Ophthalmol.* 2014;42(1):25-32.
34. Parker, M., Bellec, J., McFarland, T., Scripps, V., **Appukuttan, B.**, Hartzell, M., Yeager, A., Hady, T., Mitrophanous, K. A., Stout, T., Ellis, S. Suppression of neovascularization of donor corneas by transduction with equine infectious anemia virus-based lentiviral vectors expressing endostatin and angiostatin. *Human Gene Therapy* 2014;25(5):408-18.
35. Rose-Nussbaumer J, Goldstein DA, Thorne JE, Arantes TE, Acharya NR, Shakoob A, Jeng BH, Yeh S, Rahman R, Vemulakonda GA, Flaxel CJ, West SK, Holland GN, **Smith JR.** Uveitis in HIV-infected persons with CD4+ T-lymphocyte count over 200 cells/microliter. *Clin Exp Ophthalmol* 2014; 42: 118-125.
36. ***Souzeau, E.**, Glading, J., **Keane, M., Ridge, B., Zhou, T., Burdon, K. P., Craig, J. E.** Predictive genetic testing experience for myocilin primary open-angle glaucoma using the Australian and New Zealand Registry of Advanced Glaucoma. *Genetics in medicine : official journal of the American College of Medical Genetics* 2014 Jul;16(7):558-63. doi: 10.1038/gim.2013.196. Epub 2014 Jan 9
37. Stout, T. E., McFarland, T., Mitchell, J. C., **Appukuttan, B.**, Timothy Stout, J. Recombinant Filaggrin Is Internalized and Processed to Correct Filaggrin Deficiency. *Journal of Investigative Dermatology* 2014;134(2):423-9.
38. Suhler, E. B., Lim, L. L., Beardsley, R. M., Giles, T. R., Pasadhika, S., Lee, S. T., de Saint Sardos, A., Butler, N. J., **Smith, J. R.**, Rosenbaum, J. T. Rituximab Therapy for Refractory Scleritis. Results of a Phase I/II Dose-Ranging, Randomized, Clinical Trial. *Ophthalmology* 2014 Jun 20 doi: 10.1016/j.ophtha.2014.04.044. [Epub ahead of print]
39. Ullrich, K., **Craig, J. E., Landers, J.** Ibopamine challenge test can be used to differentiate glaucoma suspects from glaucoma patients. *Clin. Exp. Ophthalmol.* 2014;42(4):342-6.
40. Wong, T. Y., Zheng, Y., Jonas, J. B., Flaxman, S. R., Keeffe, J., Leasher, J., Naidoo, K., **Pesudovs, K.**, Price, H., White, R. A., Resnikoff, S., Taylor, H. R., Bourne, R. R. A. Prevalence and causes of vision loss in East Asia: 1990-2010. *Br. J. Ophthalmol.* 2014;98(5):599-604.

Editorials, Letters to The Editor (by invitation)

1. Coster DJ, Keane MC, **Williams, KA**. Reply to correspondence from Dr Kosker. *Ophthalmology* 2014 (in press 30-06-2014).
 2. Coster DJ, Keane MC, **Williams, KA**. Reply to correspondence from Dr Baydoun, Dr Liarakos, Dr Dapena and Dr Melles. *Ophthalmology* 2014 (in press 05-06-2014).
 3. Coster DJ, Keane MC, **Williams, KA**. Reply to correspondence from Drs Somner, Hardman-Lea, Bourne, Burr and Shah. *Ophthalmology* (in press 25-06-2014).
 4. Coster DJ, Keane MC, **Williams, KA**. Reply to correspondence from Drs Basu and Hoshing. *Ophthalmology* (in press 07-07-2014).
- (Editorial: Patel SV, Armitage WJ, Claesson M. Keratoplasty outcomes: are we making advances? *Ophthalmology* 2014;121:977-8.)
5. **Coster, D.J., Keane, M.C., & Williams, K.A.** 2014. Author reply. *Ophthalmology*. Jul 7. doi: 10.1016/j.ophtha.2014.05.035. [Epub ahead of print]
 6. **Keane, M., Coster, D., Ziaei, M., & Williams, K.** 2014. Deep anterior lamellar keratoplasty versus penetrating keratoplasty for treating keratoconus. *Cochrane Database of Systematic Reviews*. Issue 7. Art. No.: CD009700. [Epub ahead of print].
 7. **McAlinden, C.,** Skiadaresi, E. Authors' reply. *The Lancet* 2014;383(9936):2210-11.
 8. **McAlinden, C.,** Ioannidis, P., Roberts, S., Skiadaresi, E. Giant cell arteritis. *The Lancet* 2014;383(9923):1182.

BOOK CHAPTERS

1. **Smith JR.** Azathioprine. In: Zierhut, Ohno, Orefice, Pavesio, Rao (eds). Intraocular Inflammation. Springer (in press).
2. **Smith JR,** Zierhut M. Thromboangiitis obliterans. In: Zierhut, Ohno, Orefice, Pavesio, Rao (eds). Intraocular Inflammation. Springer (in press).

Appendix 3

Grant Income, 2013-2014

2013

2007-2013, RANZCO Eye Foundation. J. Craig. *Australian and New Zealand Registry of Glaucoma Blindness*. \$494,969 (\$98,994pa)

2008-2013, RANZCO Eye Foundation. R. Mills and K. Pesudovs. *Australian and New Zealand Surveillance Ophthalmic Unit*. \$619,000 (\$103,166pa)

2010-2013, NHRMC Career Development Award #595944. K. Burdon. *The identification of genes for common blinding disorders through genome wide analysis*. \$377,000 (\$94,250pa)

2010-2013, NHMRC Project Grant #595918. K. Burdon, J. Craig, M. Gillies, N. Petrovsky, M. Daniell and J. Charlesworth. *A genome-wide association scan to identify genetic risk factors for sight threatening diabetic retinopathy*. \$970,789 (\$323,596pa)

2010-2012, 2013-2015, National Institutes of Health (USA) #EY019875. J. R. Smith. *Adhesion molecules in uveitis*. US\$1,309,000 (A\$235,184pa)

2011-2013, NHMRC Project Grant #1009955. S. Sharma, K. Burdon, J. Craig, D. Mackey, R. de Jongh and N. Di Girolamo. *The role of EphA2 signalling and environmental modifiers in cataract*. \$571,732 (\$190,577pa)

2011-2014, NHMRC Project Grant #1009844. E. Lamoureux, J. Crowston, R. Casson, I. Goldberg, K. Pesudovs, P. Healy, R. Thomas and E. Finkelstein. *Comparing the effectiveness of selective laser trabeculoplasty with topical medication for the treatment of primary angle closure glaucoma: a multicentred, prospective, randomized controlled clinical trial*. \$614,240 (\$153,560pa)

2011-2015, NHMRC Principal Research Fellowship #1002044. K. Williams. *Improving Eye Health*. \$795,074 (2013: \$160,522, 2014:\$160,522)

2011-2012, 2013-2015, National Institute of Health (USA) #EY022009. J. R. Smith. *B cell trafficking to the eye*. US\$423,500 (A\$91,302pa)

2012-2013, Circadian Ltd & Flinders University Collaborative Research Grant. K. Williams, S. Klebe and R. Mills. *Anti-vascular endothelial growth factor-C biologics to prolong corneal allograft survival*. \$15,000 (matching funds from Circadian Ltd), \$30,000 (matching funds from Circadian Ltd)

2012-2014, National Institutes of Health, Exploratory/Development Grant #1R21EY021583-01A1. J. Coffey, D. Coster, S. Klebe, N. Voelcker and K. Williams. *Nanostructured porous silicon / Polymer composites as ophthalmic implants*. US\$326,680 (2012-US\$175,458; 2013-US\$151,222) A\$313,694 (\$104,564pa)

2012-2014, NHMRC Project Grant #1031362. J. Craig, S. Macgregor, A. Hewitt, K. Burdon and P. McCluskey. *Novel blood pooling methodology for genome-wide association studies to identify major genetic determinants of 5 blinding eye diseases*. \$546,000 (\$182,000pa)

2012-2014, NHMRC Project Grant #1031347. J. Craig, S. Sharma, J. Wood, G. Chidlow, T. Chataway and M. Ronci. *Functional analysis of recently identified novel glaucoma genes*. \$502,302 (\$167,434pa)

2012-2014, Australian Organ and Tissue Donation and Transplantation Authority. K. Williams. Australian Corneal Graft Register. \$429,547 (2012-13-\$211,599; 2013-2014-\$217,947) (2013-\$105,799 + \$108,973=\$214,772)

2012-2015, NHMRC Project Grant #1031838. K. Pesudovs. *A system for measurement of vision specific quality of life using item banking and computer adaptive testing (ViSBank)*. \$823,522 (2013:\$236,800, 2014:\$267,212)

2012-2016, NHMRC Centre for Research Excellence #1023911. D. Mackey, K. Burdon, A. Hewitt and J. Craig. *Translation of genetic eye research (TOGER)*. \$2,500,000 (FU-\$999,955.60) (\$199,991pa)

2013, ORIA. K. Burdon and J. Craig. *Identification and Characterisation of further novel genes for primary open angle glaucoma from a large Genome-Wide Association study*. \$49,500

2013, FMC Foundation, Seeding grant. K. P. Burdon. *Development of detailed gene expression profiles for normal and diseased human ocular tissues: The Eye-Atlas Project*. \$16,000

2013, Channel 7 Children's Research Foundation. K. P. Burdon and S. Sharma. *Gene identification in congenital cataract using high throughput sequencing technologies*. \$70,000

2013, Faculty of Health Sciences, Equipment grant. J. Carr, K. Williams and J. R. Smith. *Cryogenic liquid nitrogen storage unit*. \$29,501

2013, NHMRC Equipment Grant. T. Chataway, K. Williams, D. Gordon, D. Keating, S. Sharma and N. Sims. *Thermo Q Exactive Mass Spectrometer and Dionex chromatography system*. \$61,255

2013, Flinders Centre for Innovation in Cancer. S. Klebe and K. Williams. *Combined blockade of aquaporin 1 and VEGF-A to inhibit growth of malignant mesothelioma*. \$15,000

2013, Faculty of Health Science, Seeding grants. S. Klebe and K. Williams. *Establishment of an animal model of malignant mesothelioma to assess the effectiveness of inhibition of VEGFA in vivo*. \$16,000

2013, ORIA/RANZCO Eye Foundation Indigenous Eye Health Grant. S. Lake, T. Henderson and H. Newland. *Population-based study of diabetic vitrectomy indications and outcomes in Indigenous Australians*. \$45,000

2013, FMC Foundation Seeding - ECR grant. T. Loetscher and C. Chen. *Using eye-tracking glasses for improved diagnosis of spatial neglect*. \$17,597

2013, FMC Foundation Seeding grant. J. R. Smith and B. Appukuttan. *Autophagy and the retinal endothelial cell: implications for diabetic retinopathy*. \$19,959

2013, ORIA/Renensson Bequest Grant. K. Williams, H. Brereton and D. Coster. *Reducing Corneal Transplant Failure (towards operational tolerance for corneal transplantation)*. \$49,500

2013, FMC Foundation Research, top up grant. K. Williams, H. Brereton, S. Klebe and C. Chen. *Anti-vascular endothelial growth factor-B as a biological for treating eye disease*. \$15,686

2013-2014, Fight for Sight (UK). T. Braithwaite, R. Bourne, S. Ramsewak and K. Pesudovs. *National Eye Survey of Trinidad and Tobago (NESTT): The impact of vision loss on patient-reported outcome measures including quality of life*. \$23,437 (\$11,718pa)

2013-2015, NHMRC Project grant #1048302. L. Keay, L. Meuleners, K. Pesudovs, P. McCluskey, S. Boufous, J. Ng, N. Morlet and F. Stapleton. *Understanding the impact of cataract vision impairment on risk of falling*. \$775,262 (\$258,420pa)

2013-2015, Flinders University DVCR. K. Williams. *Flinders Centre for Ophthalmology, Eye & Vision Research*. \$360,000 (\$120,000pa)

2013-2015, NHRMC #1046634. K. Williams, H. Brereton, S. Klebe and C. Chen. *Anti-vascular endothelial growth factor-B as a biological for treating eye diseases*. \$456,727 (2013:\$167,313, 2014: \$144,707)

2013-2016, European Society of Cataract and Refractive Surgery. M. Lundstrom and K. Pesudovs. *Including patient-reported outcome measures in the EUREQUO database*. \$167,250 (\$55,720pa)

2013-2015, NHMRC Project grant 1048037. J. Craig, K. Burdon, R. Casson, J. Landers, S. Graham, P. Healey and A. Agar. *Towards translation of glaucoma blindness genes into clinical practice: predicting Risk Of Glaucoma: RElevant SNPs with Strong Association (PROGRESSA) Study*. 956,020.26 (\$318,673pa)

2014

2011-2014, NHMRC Project Grant #1009844. E. Lamoureux, J. Crowston, R. Casson, I. Goldberg, K. Pesudovs, P. Healy, R. Thomas and E. Finkelstein. *Comparing the effectiveness of selective laser trabeculoplasty with topical medication for the treatment of primary angle closure glaucoma: a multicentred, prospective, randomized controlled clinical trial*. \$614,240 (\$153,560pa)

2011-2015, NHMRC Principal Research Fellowship #1002044. K. Williams. *Improving Eye Health*. \$795,074 (\$160,522)

2012-2014, National Institutes of Health, Exploratory/Development Grant #1R21EY021583-01A1. J. Coffey, D. Coster, S. Klebe, N. Voelcker and K. Williams. *Nanostructured porous silicon / Polymer composites as ophthalmic implants*. US\$326,680 (2012-US\$175,458; 2013-US\$151,222) A\$313,694 (\$104,564pa)

2012-2014, NHMRC Project Grant #1031362. J. Craig, S. Macgregor, A. Hewitt, K. Burdon and P. McCluskey. *Novel blood pooling methodology for genome-wide association studies to identify major genetic determinants of 5 blinding eye diseases*. \$546,000 (\$182,000pa)

2012-2014, NHMRC Project Grant #1031347. J. Craig, S. Sharma, J. Wood, G. Chidlow, T. Chataway and M. Ronci. *Functional analysis of recently identified novel glaucoma genes*. \$502,302 (\$167,434pa)

2012-2014, Australian Organ and Tissue Donation and Transplantation Authority. K. Williams. *Australian Corneal Graft Register*. \$429,547 (2012-13-\$211,599; 2013-2014-\$217,947) 2014-\$108,973.

2012-2015, NHMRC Project Grant #1031838. K. Pesudovs. *A system for measurement of vision specific quality of life using item banking and computer adaptive testing (ViSBank)*. \$823,522 (2014:\$267,212)

2012-2016, NHMRC Centre for Research Excellence #1023911. D. Mackey, K. Burdon, A. Hewitt and J. Craig. *Translation of genetic eye research (TOGER)*. \$2,500,000 (FU-\$999,955.60) (\$166,659pa)

2013-2014, Fight for Sight (UK). T. Braithwaite, R. Bourne, S. Ramsewak and K. Pesudovs. *National Eye Survey of Trinidad and Tobago (NESTT): The impact of vision loss on patient-reported outcome measures including quality of life*. \$23,437

2013-2015, NHMRC Project grant #1048302. L. Keay, L. Meuleners, K. Pesudovs, P. McCluskey, S. Boufous, J. Ng, N. Morlet and F. Stapleton. *Understanding the impact of cataract vision impairment on risk of falling*. \$775,262 (\$258,420pa)

2013-2015, Flinders University DVCR. K. Williams. *Flinders Centre for Ophthalmology, Eye & Vision Research*. \$360,000 (\$120,000pa)

2013-2015, NHRMC #1046634. K. Williams, H. Brereton, S. Klebe and C. Chen. *Anti-vascular endothelial growth factor-B as a biological for treating eye diseases*. \$456,727 (2014: \$144,707)

2013-2016, European Society of Cataract and Refractive Surgery. M. Lundstrom and K. Pesudovs. *Including patient-reported outcome measures in the EUREQUO database*. \$167,250 (\$41,812pa)

2013-2015, NHMRC Project grant #1048037. J. Craig, K. Burdon, R. Casson, J. Landers, S. Graham, P. Healey and A. Agar. *Towards translation of glaucoma blindness genes into clinical practice: predicting Risk Of Glaucoma: RElevant SNPs with Strong Association (PROGRESSA) Study*. \$956,020.26 ((\$318,673pa)

2014, Flinders University DVC-R Near Miss. B. Appukuttan, K. Williams and M. Michael. *Susceptibility to oxygen-induced retinopathy: Identification of genetic targets and therapies*. \$50,000

2014, Ophthalmic Research Institute of Australia (ORIA). K. P. Burdon, J. E. Craig and E. Souzeau. *Identifying genetic causes of Primary Congenital Glaucoma in Australia*. \$50,000

2014, Perpetual Funding Round 2013. K. Williams. *Improving the quality of human donor corneas for corneal transplantation*. \$99,521.25

2014, Ophthalmic Research Institute of Australia (ORIA). S. Sharma and J. E. Craig. *Molecular investigation of two novel genes associated with glaucoma blindness*. \$50,000

2014, Ophthalmic Research Institute of Australia (ORIA). J. R. Smith. *Toxoplasma gondii infection of human retinal cells*. \$49,900

2014, Ophthalmic Research Institute of Australia (ORIA). K. Williams, S. Klebe and R. Mills. *Testing new drugs to improve corneal transplant surgery*. \$45,500

2014-2016, NHMRC #1065433 J. E. Craig. *Disease Registry based approaches to determining molecular risk factors for glaucoma blindness, and applying them in clinical practice*. \$387,298 (\$129,099pa)

2014-2016, Avant DIT Research Scholarship. G. Kaidonis. *Investigation of the genetic aspects contributing to the development of diabetes related blindness*. \$50,000 (Scholarship)

2014-2016, NHMRC #1066235 J. R. Smith. *Toxoplasma gondii Infection of Human Retinal Pigment Epithelium*. \$445,505 (\$148,501pa)

2014-2016, Australian Organ and Tissue Donation and Transplantation Authority. K. Williams. *Australian Corneal Graft Registry* \$484,786 (2014-2015-\$238,771; 2015-2016-\$246,015) 2014-\$119,387

2014-2017, Australian Research Council (ARC Future Fellowship). J. R. Smith. *Molecular activities of retinal endothelial cells, retinal disease processes, biological therapies to address efficacy and safety deficiencies of current treatments*. \$989,144 (\$247,286pa)

Appendix 4

Presentations at Meetings, 2013-2014



Dr Binoy Appukuttan

Presentations at international and national meetings

- 2013: Association for Research in Vision and Ophthalmology (ARVO). *Hartzell M, Stempel AJ, McFarland TJ, Appukuttan B, Stout JT. Assessment of Intravitreal AAV-TEAD4 Isoforms in the OIR Model.*
- 2013: Association for Research in Vision and Ophthalmology (ARVO). *McFarland TJ, Appukuttan B, Stout JT. TEAD4 Isoform Inhibits Vessel Growth in an Aortic Ring Assay.*
- 2013: Association for Research in Vision and Ophthalmology (ARVO). *Appukuttan B, Stempel AJ, Wilmot B, Stout JT. Angiogenic profile of hypoxic vascular endothelial cells overexpressing RTEF-1.*
- 2013: Association for Research in Vision and Ophthalmology (ARVO). *Appukuttan B, Wilmarth PA, Pan A, David LL, Smith J. Inflammatory and neovascular markers identified by deep shotgun proteomic profiling of human retinal and choroidal vascular endothelial cells*
- 2014: Association for Research in Vision and Ophthalmology (ARVO). *Ellis S, Mitrophanous K, Parker MA, Scripps V, McFarland TJ, Hartzell M, Appukuttan B, Stout T. Nonclinical Development of Encorstat®, Donor Corneal Tissue Genetically Engineered to Prevent Graft Rejection.*



Mr Liam Ashander

Presentations at international and national meetings

- 2013: ASMR SA 2013. Australian Society for Medical Research South Australia Meeting; June 5; Adelaide. *Ashander LM, Chippis TJ, Lindsay RA, Smith JR. Strain-dependent Effects of Toxoplasma gondii Infection on the Immunomodulatory Function of Human retinal Pigment Epithelium.*
- 2014: ASMR SA 2014. Australian Society for Medical Research South Australia Meeting; 2014 June 4; Adelaide. *Ashander LM, Appukuttan B, Smith JR. Differential Expression of Intercellular Adhesion Molecule-1 by Human Retinal Endothelial Cells in Response to Inflammatory Stimuli.*
- 2014: ISER 2014. XXI Biennial Meeting of the International Society for Eye Research; 2014 July 20-24; San Francisco, USA. *Appukuttan B, Ashander LM, Smith JR. Expression of Intercellular Adhesion Molecule-1 by Human Retinal Endothelial Cells in Response to Inflammatory Stimuli.*



Dr Mona Awadalla

- 2014: Genemappers Conference, Barossa Valley. *M Awadalla. The Association of TBK1 and OPTN genes with Normal-Tension Glaucoma in an Australian Cohort.*



Dr Kathryn Burdon

Sessions Chaired

2013: Australian Ophthalmology and Vision Science meeting, Hobart, Tasmania, November

Organising Committee

2014: Lorne Genome Conference, Lorne, Victoria, February 2015

2014: Convenor, 10th Australasian Gene Mapping Meeting (GeneMapper's), Barossa Valley, SA, May

Invited talks: International and national meetings

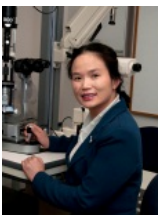
2013: Lorne Genome Conference, Lorne, Victoria, February. *Genetic Markers of Ophthalmic Disease.*

Presentations at international and national meetings

2013: AMATA (Australian Microarray and Associated Technology Association) Annual Meeting, Gold Coast October. *Kathryn P Burdon, Rhys Fogarty, Nikolai Petrovsky, Mark Gillies, Mark Daniell, Sotoodeh Abhary, Gowthaman Govindarjan, Periasamy Sundaresan, Georgia Kaidonis, Alicia Jenkins, John Chang, Rohan Essex, Bishwanath Pal, Jamie E Craig Genetic variation near GRB2 and KCNB2 identified by a genome-wide association study is reproducibly associated with Diabetic Retinopathy*

2013: Australian Ophthalmology and Vision Science Meeting, Hobart, Tasmania, November. *Kathryn P Burdon, Rhys Fogarty, Nikolai Petrovsky, Mark Gillies, Mark Daniell, Sotoodeh Abhary, Gowthaman Govindarjan, Periasamy Sundaresan, Georgia Kaidonis, Alicia Jenkins, John Chang, Rohan Essex, Bishwanath Pal, Jamie E Craig Genetic variation near GRB2 and KCNB2 identified by a genome-wide association study is reproducibly associated with Diabetic Retinopathy*

2013: Association for Research in Vision and Ophthalmology (ARVO). *Kaidonis G. Craig JE; Fogarty R; Gillies MC; Shen W; Sharma S; Appukuttan B; Pal B; Sundaresan P; Burdon KP. Genetic variation near GRB2 and KCNB2 identified by a genome-wide association study are reproducibly associated with Diabetic Retinopathy.*



Associate Professor Celia Chen

Invited talks: International and national meetings

2013: Asian Pacific Academy of Ophthalmology, Hyderabad, January. *Ptosis – a practical approach.*

2013: Asian Pacific Academy of Ophthalmology, Hyderabad, January. *Ocular motility – basic approach.*

2013: Evidence Based Ophthalmology Workshop: “*Translating The Evidence*”, November, Hobart. *Randomization: what to do and what not to do.*

2014: World Ophthalmology Congress. Japan, April. *Ptosis – a practical approach.*

2014: Australian Vision Convention. Gold Coast, April.

2014: Royal Australian College of General Practitioners Convention. Adelaide, May.



Professor Jamie Craig

Invited talks: International and national meetings and organisations

- 2013: Southern Regional Congress, Optometrists Association. *Craig JE. (Invited Symposium): Ocular Coherence Tomography in Clinical Practice, Retina and Glaucoma.*
- 2013: National Clinical Genetics Dysmorphology Meeting. *Craig JE. Genetics of congenital glaucoma and cataract.*
- 2013: World Glaucoma Association: World Glaucoma Conference, Canada. *Craig, JE (Course Convenor, Chair and Speaker). Understanding the genetic basis of Glaucoma.*
- 2013: World Glaucoma Association: World Glaucoma Conference, Canada. *Craig, JE. (Invited Faculty Member). Progress in genetics of open angle glaucoma.*
- 2013: Australian and New Zealand Glaucoma Interest Group (ANZGIG). *Craig, JE. Update on the ANZRAG.*
- 2013: Royal Australian and New Zealand College of Ophthalmologists, SA State Branch Meeting. *Craig, JE. The new genetics and glaucoma.*
- 2013: New Zealand Annual Congress of Ophthalmology

Presentations at international and national meetings

- 2013: Royal Australian and New Zealand College of Ophthalmologists (RANZCO) New Zealand Branch, Annual Scientific meeting. *Craig JE. New strategies in glaucoma progression; imaging and genetics.*
- 2013: Royal Australian and New Zealand College of Ophthalmologists (RANZCO) New Zealand Branch, Annual Scientific meeting. *Craig JE. Unlocking the secrets of the pseudoexfoliation syndrome.*
- 2013: Royal Australian and New Zealand College of Ophthalmologists (RANZCO) New Zealand Branch, Annual Scientific meeting. *Craig JE. Understanding glaucoma blindness with a disease registry: Why does it happen and what can we do?*
- 2013: Royal Australian and New Zealand College of Ophthalmologists (RANZCO) New Zealand Branch, Annual Scientific meeting. *Craig JE. Families, twins and populations; in roads to understanding eye disease.*
- 2013: Royal Australian and New Zealand College of Ophthalmologists, SA State Branch Meeting. *Craig JE. New clinical trials in glaucoma.*
- 2013: Association for Research in Vision and Ophthalmology (ARVO). *Craig, JE. Identification of further novel genome wide significant loci for open angle glaucoma blindness utilizing the Australian and New Zealand Registry of Advanced Glaucoma.*
- 2013: Association for Research in Vision and Ophthalmology (ARVO). *Craig, JE. Human ocular distribution of products of the POAG-Associated CDKN2B-AS1 gene cluster region.*
- 2013: World Glaucoma Association: World Glaucoma Conference. *Craig JE. Consensus Meeting – Childhood Glaucoma. (Panel member)*
- 2014: Association for Research in Vision and Ophthalmology (ARVO) *Craig JE, Fitzgerald J, Ng S, Awadalla M, Hewitt AW, Mackey DA, Fogarty R, Burdon KP. Epigenetic associations at the 9p21 glaucoma locus contribute to a female bias in normal tension glaucoma..*
- 2014: Association for Research in Vision and Ophthalmology (ARVO) *Kaidonis G, Craig JE, Fogarty R, Gillies MC, Shen W, Sharma S, Appukuttan B, Pal B, Sundaresan P, Burdon KP. Genetic variation near GRB2 and KCNB2 identified by a genome-wide association study are reproducibly associated with Diabetic Retinopathy.*
- 2014: Association for Research in Vision and Ophthalmology (ARVO) *Venturini, C. Craig, J E, Pfeiffer, N, van Duijn, C M, Wiggs, J L, Aung, T, Mackey, D A, Viswanathan, A C,*

Hammond, C J, Internatiol Glaucoma Genetics Consortium- IGGC. Common mechanisms underlying intraocular pressure identified in functional analysis of gene lists from genome-wide association study results in IGGC cohorts.

2014: Association for Research in Vision and Ophthalmology (ARVO) Van Bergen, NJ, Craig, JE, Hewitt, AW, Burdon, KP, Sharma, S, Crowston, JG, Troncone, IV. *Mitochondrial Impairments in Primary Open Angle Glaucoma Patient Lymphoblasts.*



Dr Miriam Keane

Presentations at international and national meetings

- 2013: The 30th Annual Australia and New Zealand Cornea Society. *Williams, K.*, Lowe, M., Jones, V., Keane, M., Mills, R., & Coster, D.J. Australian Corneal Graft Registry Report 2013.*
- 2013: The 30th Annual Australia and New Zealand Cornea Society Meeting. *Penetrating keratoplasty vs. DALK for keratoconus.*
- 2013: The 30th Annual Australia and New Zealand Cornea Society Meeting. *Keane, M.C., Lowe, M.T., Coster, D.J., Pollock, G.A., & Williams K.A. Outcomes of transported corneas.*
- 2013: Perinatal Society of Australia and New Zealand (PSANZ) 17th Annual Congress. *Oh, D.*, Keane, M.C., Fabel, H., Taranath, D., & Marshall, P.B. Do we need a nationwide consensus on screening criteria for Retinopathy of Prematurity? Results from a tertiary hospital audit in South Australia. (Poster presentation)*
- 2013: 45th Annual Scientific Congress of the Royal Australian and New Zealand College of Ophthalmologists. *Crabb, M.G.*, Supramaniam, D., Glading, J., Kaidonis, G., Keane, M., Cugati, S., Hsu, T., Lake, S., Saha, N., Landers, J., & Craig, J. The Intravitreal Pain Score Study (IVPSS): A single centre blinded randomised prospective study comparing subjective pain experienced between sub-conjunctival injections versus paged anaesthetic techniques. (Poster presentation)*
- 2014: The 31st Annual Australia and New Zealand Cornea Society Meeting. *The influence of storage medium on corneal graft outcomes.*



Dr Jyoti Khadka

Invited talks: national meetings

2013: Flinders Clinical and Molecular Medicine, Seminar Series April 17 2013. (Invited speaker) *Khadka J. Development of a comprehensive Glaucoma-specific quality of life measurement system.*

Presentations at international and national meetings

- 2013: *Khadka J, Fenwick EK, Lamoureux EL, Pesudovs K. The Eye-tem Bank: a novel and comprehensive quality of life measurement system. Australian College of Optometry National Conference 19-20 Oct, Melbourne, Australia.*
- 2013: *Pesudovs K, Khadka J, Fenwick EK, Lamoureux EL. The Eye-tem Bank project: an update. American Academy of Optometry Conference Oct 23-26, Seattle, USA.*
- 2013: *Pesudovs K, Khadka J, Fenwick EK, Lamoureux EL An update of the Eye-tem Bank project: a comprehensive patient-reported outcome measurement system. European Society of Cataract and Refractive Surgeon XXX Congress Oct 5-9. Amsterdam, The Netherlands.*
- 2013: *Pesudovs K. Khadka J, Fenwick EK, Lamoureux EL. Rash analysis of the glaucoma-specific*

module of the Eye-tem Bank project. The Association of Research in Vision and Ophthalmology May 5 – 9. Seattle, Washington, USA. (Poster presentation)

2014: Pesudovs K, Khadka J, Fenwick EK, Lamoureux. Progress in the development of ophthalmic quality of life measuring patient-reported outcome measures. American Academy of Optometry. Nov 12-15; Denver, Colorado, USA. (Scientific Paper)

2014: Pesudovs K, Khadka J, Fenwick EK, Lamoureux EL. An update of the Eye-tem Bank project: a novel system to measure ophthalmic patient-reported outcomes. The Association of Research in Vision and Ophthalmology May 4 - 8, 2014; Orlando, Florida, USA. (Poster presentation)



Associate Professor Sonja Klebe

Presentations at international and national meetings

2013: International Academy of Pathology, Sydney. *Klebe, S. Corneal dystrophies – an update.*



Dr John Landers

Chaired meetings

2013: RANZCO Annual Scientific Conference. *Symposium: The Validity of current glaucoma tests.*

Invited talks: National meetings

2013: SA RANZCO Scientific Conference.

Topic: Challenge Tests in Ophthalmology.

Topic: Defining Glaucoma Progression on Visual Fields.

Topic: Avastin in Trabeculectomy

2013: World Glaucoma Association: World Glaucoma Conference:

Paper: Diagnosing Glaucoma with an Ibopamine Challenge

2013: RANZCO Annual Scientific Conference.

Paper: Diagnosing Glaucoma with an Ibopamine challenge

Symposium: The Validity of Current Glaucoma Tests



Dr Raymond Loh

Invited talks: International meetings

2013: 30th Australian and New Zealand Cornea Society Meeting, March, Adelaide SA. *Loh, R. The evidence for collagen cross linking.*



Associate Professor Richard Mills

Chaired meetings

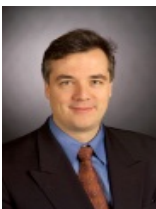
- 2013: RANZCO Annual Scientific Conference. *Rapid Fire Paper Session: Cornea.*
 2013: Evidence Based Ophthalmology Workshop: “*Translating the Evidence*” (Hobart)

Invited talks: International and national meetings

- 2013: 30th Australian and New Zealand Cornea Society Meeting, March, Adelaide SA. *Mills, R. OSSN. What treatment?*
 2013: RANZCO 45th Annual Scientific Congress Hobart, Tas. *Treatment protocol for OSSN.*
 2013: RANZCO 45th Annual Scientific Congress, Hobart. *Saunders L, Mills R. The Australian & New Zealand Ophthalmic Surveillance Unit (ANZOSU)*
 2013: Evidence Based Ophthalmology Workshop: “*Translating The Evidence*”, November, Hobart Tas. *Mills, R.: The value of registry-based evidence.*
 2013: Corneal Transplantation Optometrists Association of Australia (SA Division), Adelaide SA.
 2013: Insight Global Health Short Course, University of Adelaide SA. *The Roadmap to Close the Gap for Vision. Observations from the APY Lands.*
 2014: Mitcham Lions Club, Adelaide SA. *Eye Bank of South Australia*

Presentations at international and national meetings

- 2013: Association for Research in Vision and Ophthalmology, Seattle USA. *Mills, R. Outcomes of new partial-thickness corneal grafts: a paradigm shift in practice, but at what cost?*
 2013: RANZCO 45th Annual Scientific Congress, Hobart. *The Australian and New Zealand Ophthalmic Surveillance Unit (poster)*
 2013: RANZCO 45th Annual Scientific Congress, Hobart. *Severe response to periocular or intraocular steroid treatment in Australia and New Zealand (poster).*
 2013: Optometrist Association of Australia, June. *Mills, R. Lamellar keratoplasty.*



Professor Konrad Pesudovs

Chaired sessions

- 2014: *Introduction to Evidence-Based Optometry*, Evidence-Based Optometry Conference, Adelaide, April.
 2014: *Masterclass in Therapeutics*, Evidence-Based Optometry Conference, Adelaide, April.
 2014: *Masterclass in Paediatrics*, Evidence-Based Optometry Conference, Adelaide, April.
 2014: *Masterclass in Contact Lens and Refractive Correction*, Evidence-Based Optometry Conference, Adelaide, April.
 2014: *Masterclass in Ophthalmic Disease Management*, Evidence-Based Optometry Conference, Adelaide, April.

Invited talks: International and national meetings and universities

- 2013: EYENET Sweden Disease Specific PROM 2 Seminar, Stockholm September, October. *Pesudovs K. Item-banking, third generation questionnaire*
 2013: Evidence Based Ophthalmology Workshop: “*Translating The Evidence*”, November, Hobart Tas. *Pesudovs K. Do accommodating IOLs provide any measurable advantage over monofocal IOLs?.*

2014: Vision 2014, Melbourne, April. *Quality of Life Methods Demystified*.

2014: Vision 2014, Melbourne, April. Vision and Falls Research: *The story so far. Knowledge to action in falls prevention across the care curriculum*.

Published abstracts

2013: Pesudovs K, Khadka J, Fenwick EK, Lamoureux EL. Rasch analysis of the glaucoma-specific module of the Eye-tem Bank project. Invest Ophthalmol Vis Sci 53. Seattle, Washington, May 2013, sponsored by ARVO.

2013: Pesudovs K, Khadka J, Fenwick EK, Lamoureux EL. The Eye-Tem Bank project – an update. Optom Vis Sci 2013;90. Seattle, Washington, October 2013, sponsored by AAO.

2014: Pesudovs K, Khadka J, Fenwick EK, Lamoureux EL. An update of the Eye-Tem Bank: a novel system to measure ophthalmic patient-reported outcomes. Orlando, Florida, May 2014, sponsored by ARVO

Unpublished abstracts

2013: American Academy of Optometry Conference, Seattle, USA. *Pesudovs K, Khadka J, Fenwick EK, Lamoureux EL. The Eye-tem Bank project: an update.*

2013: European Society of Cataract and Refractive Surgeon XXX Congress, Amsterdam, The Netherlands. *Pesudovs K, Khadka J, Fenwick EK, Lamoureux EL An update of the Eye-tem Bank project: a comprehensive patient-reported outcome measurement system.*

2013: *Pesudovs K. Unaided visual acuity is the only yardstick – No.* European Society of Cataract and Refractive Surgeons in Warsaw, Poland, February.

2013: *Pesudovs K. The science of patient-reported measurement and its applications in ophthalmology.* Post-graduate teaching seminar, Royal Victoria Infirmary, Newcastle, UK, February.

2013: *Pesudovs K. Comment on: Lundstrom K-J A planned Questionnaire for the Swedish Hernia Registry.* Eyenet Sweden Disease Specific PROM 2 Seminar, Stockholm September.

2013: *Pesudovs K. Comment on: Montgomery F A planned Questionnaire for the Swedish Foot Register.* Eyenet Sweden Disease Specific PROM 2 Seminar, Stockholm September.

2013: *Pesudovs K. Workshop – How to plan a Questionnaire – and follow up.* Eyenet Sweden Disease Specific PROM 2 Seminar, Stockholm September.

2014: *Pesudovs K. Welcome and Introduction to Evidence-Based Practice.* Evidence-Based Optometry Conference, Adelaide April.

2014: *Pesudovs K. How to read and appraise a paper.* Evidence-Based Optometry Conference, Adelaide April.

2014: *Pesudovs K. The Flinders approach to teaching Evidence-Based Optometry.* Evidence-Based Optometry Conference, Adelaide April.



Dr Niladri Saha

Presentations at international and national meetings

2013: RANZCO 45th Annual Scientific meeting. *Crabb M, Supramaniam D, Glading J, Kaidonis G, Keane M, Cugati S, Hsu T, Lake S, Saha N, Landers J, Craig J. The intravitreal pain score study (IVPSS): A single centre blinded randomised prospective study comparing subjective pain experienced between sub-conjunctival injections versus pledget anaesthetic techniques.*

2013: RANZCO 45th Annual Scientific meeting. *Crabb M, Supramaniam D, Lake S, Saha N. Visual acuity outcomes of macular-off retinal detachment surgery.*



Dr Roman Serebrianik

Invited talks: Local institutes

2013 Optometry Southern Regional Congress (organised by the Optometrists Association Australia), June. *Serebrianik, R. OCT: the What, the How and the WOW.*



Dr Shiwani Sharma

Invited talks: national meetings

2013 The 6th Asia and Oceania Conference on Photobiology, Sydney. *Ultraviolet radiation and the ocular lens.*

Presentations at international and national meetings

- 2013 Asia-ARVO, New Delhi, India, Oct 28-31. *S Sharma, S Martin, J Wood, G Chidlow, D Dimasi, K Burdon, K Griggs, S Klebe, R Casson, JE Craig. Molecular analysis of the TMC01 gene in glaucoma.*
- 2013 Asia-ARVO, New Delhi, India, Oct 28-31. *A Dave, K Laurie, S Martin, R Kumar, SE Staffieri, D Taranath, DA Mackey, P Mitchell, JJ Wang, J Craig, K Burdon, S Sharma. . (oral presentation) Contribution of mutations in the EPHA2 gene to inherited cataract in an Australian cohort and molecular analysis of the mutant proteins.*
- 2014 ISER, San Francisco, USA, July 21-24. *I Trounce, N Van Bergen, V Chrysostomou, K Burdon, S Sharma, A Hewitt, J Craig, J Crowston. Mitochondrial energetic impairment in glaucoma.*
- 2014 ISER, San Francisco, USA, July 21-24. *S Sharma, S Martin, A Dave, M Corbett, M Ronci, K Burdon, N Voelcker, JE Craig. The ocular lens and environmental insult: interesting novel observations.*
- 2014 ISER, San Francisco, USA, July 21-24. *A Dave, S Martin, R Kumar, JE Craig, KP Burdon, S Sharma (oral presentation). Molecular analysis of congenital cataract causing mutations in the EPHA2 gene.*



Professor Justine Smith

Invited talks: International and national meetings

- 2013 Singapore National Eye Centre and American Association for Pediatric Ophthalmology and Strabismus Joint Meeting. Singapore. *JR Smith. Masquerade syndromes.*
- 2013 XXX Pan-American Congress of Ophthalmology. Rio de Janeiro, Brazil. *JR Smith. Vogt-Koyanagi-Harada syndrome. Prognostic value of extraocular manifestations.*
- 2013 XXX Pan-American Congress of Ophthalmology. Rio de Janeiro, Brazil. *JR Smith. Occlusive vasculopathy and its many causes. Part I.*
- 2013 XXX Pan-American Congress of Ophthalmology. Rio de Janeiro, Brazil. *JR Smith. Anti-TNF in Uveitis.*
- 2013 XXX Pan-American Congress of Ophthalmology. Rio de Janeiro, Brazil. *JR Smith. ARVO and Advocacy.*

- 2013 ASIA-ARVO. New Delhi, India. *JR Smith. Mechanisms of Ocular Toxoplasmosis. Plenary lecture.*
- 2013 ASIA-ARVO. New Delhi, India. *JR Smith. Retinal imaging for global health research.*
- 2013 ASIA-ARVO. New Delhi, India. *JR Smith. Migration of helper T cell subsets into the eye.*
- 2013 12th International Ocular inflammation Society Congress. 2nd International Assembly of Ocular Inflammation Societies. Valencia, Spain. *JR Smith. Immunopathology of retinal vasculitis and intermediate uveitis.*
- 2013 30th Australia & New Zealand Cornea Society Meeting. Adelaide, Australia. *JR Smith. How to co-manage immunosuppression.*
- 2013 *JR Smith, B Appukuttan. Ocular endothelial cell profiling as a method for gaining insight into pathogenesis of vascular diseases.* Australian Vascular Biology Society - Australian and New Zealand Microcirculation Society Joint Meeting. Barossa Valley, Australia. 2013.
- 2013 *JR Smith. Management of uveitis: 10 tips for good clinical practice.* 45th Royal Australian and New Zealand College of Ophthalmologists Congress. Hobart, Australia. 2013.
- 2013 *JR Smith. YO ARVO! Exploring Careers in Research.* American Academy of Ophthalmology Annual Meeting. New Orleans, LA, USA.
- 2014 *JR Smith. Translational studies of ocular toxoplasmosis.* 12th International Ocular inflammation Society Congress. 2nd International Assembly of Ocular Inflammation Societies. Valencia, Spain. 2014
- 2014 *JR Smith. Global research in ocular infectious disease. "The Symbiosis of Global Eye Research: Building Bridges between the Developed and Developing Worlds"* SIG. Association for Research in Vision and Ophthalmology Annual Meeting. Orlando, FL, USA.
- 2014 *JR Smith. Mechanisms of Toxoplasma gondii infection of human retina.* XXI Biennial Meeting of the International Society for Eye Research. San Francisco, CA, USA.
- 2014 *JR Smith. Lymphocyte migration across human retinal vascular endothelium: implications for human autoimmune posterior uveitis.* 19th Congress of the Chinese Ophthalmological Society. Xi'an, China. To be held September 2014.
- 2014 *JR Smith. Chronic or recurrent anterior uveitis. Uveitis 2014: Extinguishing the Great Fire (AAO Subspecialty Day).* American Academy of Ophthalmology Annual Meeting. Chicago, IL, USA. To be held November 2014.
- 2014 *JR Smith. Translational studies of toxoplasmic retinochoroiditis.* 17th AFRO-ASIAN Congress of Ophthalmology. Xi'an, China. To be held September 2014.

Presentations at international and national meetings

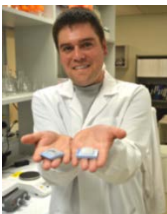
- 2013 Association for Research in Vision and Ophthalmology Annual Meeting. Seattle, WA, USA. *TM Martin, P Stauffer, E. Patridge, C Younkens, M. Burcham, J Smith. Genetic analysis of risk alleles associated with inflammatory bowel disease in acute anterior uveitis.*
- 2013 Association for Research in Vision and Ophthalmology Annual Meeting. Seattle, WA, USA. *EJ Lee, JM Furtado, B Brown, EE Vance, JP Sacdal, V Bhargava, JR Smith, P Silver, RR Caspi, HL Rosenzweig. An unexpected role for the innate immune receptor NOD2 in suppression of experimental autoimmune uveitis.*
- 2013 *JR Smith. Drugs for Posterior Segment Intraocular Inflammation.* 45th Royal Australian and New Zealand College of Ophthalmologists Congress. Hobart, Australia.
- 2014 *B Appukuttan, PA Wilmarth, Y Pan, LL David, JR Smith. Inflammatory and neovascular markers identified in deep shotgun proteomic profiling of human retinal and choroidal vascular endothelial cells.* Association for Research in Vision and Ophthalmology Annual Meeting. Orlando, FL, USA.
- 2014 *B Appukuttan, L Ashander, JR Smith. Expression of intercellular adhesion molecule 1 by human retinal endothelial cells in response to inflammatory stimuli.* XXI Biennial Meeting of the International Society for Eye Research. San Francisco, CA, USA.

Sessions & courses chaired

- 2013 Clinical and Translational Studies in Ocular Inflammation. Association for Research in Vision and Ophthalmology Annual Meeting. Seattle, WA, USA. May.
- 2013 Ocular Inflammatory Disease Symposium. Singapore National Eye Centre and American Association for Pediatric Ophthalmology and Strabismus Joint Meeting. Singapore.
- 2013 Molecular Imaging of the Retina. European Association for Vision and Eye Research Annual Congress. Nice, France.
- 2013 Mechanisms of Ocular Inflammation and Infection. ASIA-ARVO. New Delhi, India.
- 2013 Uveitis Café. American Academy of Ophthalmology Annual Meeting. New Orleans, LA, USA.
- 2014 International Uveitis Study Group Session: Autoinflammation. 12th International Ocular inflammation Society Congress. 2nd International Assembly of Ocular Inflammation Societies. Valencia, Spain.
- 2014 Ocular Immune Responses. Association for Research in Vision and Ophthalmology Annual Meeting. Orlando, FL.
- 2014 Where Are the Women? Exploring Roles in ARVO. Association for Research in Vision and Ophthalmology Annual Meeting. Orlando, FL.
- 2014 Ocular Infection and Host Defence. XXI International Congress of Eye Research. San Francisco, CA, USA.

**Ms Emmanuelle Souzeau****Presentations at international national meetings**

- 2013 *Translating results of the Australian and New Zealand Registry of Advanced Glaucoma (ANZRAG) into clinical practice*, Royal Australian & New Zealand College of Ophthalmologists (RANZCO) Annual Scientific Congress, Hobart, TAS, Australia, 3 November.
- 2013 *Translating results of the Australian and New Zealand Registry of Advanced Glaucoma (ANZRAG) into clinical practice*, American Society of Human Genetics (ASHG) Annual Meeting, Boston, MA, USA, 24 October. (Poster)

**Mr Andrew Stempel****Presentation at international and national meetings**

- 2013 *Stempel AJ, Morgans C, Stout JT, Appukuttan B. Detection and Quantification of VEGF, HIF-1 α , HIF-2 α and TEAD4 Transcripts in the Mouse Model of Oxygen-Induced Retinopathy*, ARVO Meeting.
- 2013 *Appukuttan B, Stempel AJ, Stout JT. Angiogenic Profile of Hypoxic Vascular Cells Overexpressing RTEF-1*, ARVO (poster).
- 2013 *Hartzell M, Stempel AJ, McFarland TJ, Appukuttan B, Stout JT. Assessment of Intravitreal AAV-TEAD4 Isoforms in the OIR Model*, ARVO Meeting (poster).
- 2014 *Stempel A, Morgans C, Stout T, Appukuttan B. Regulators of Hypoxia-Responsive Genes Identified within Neovascular Tufts in the Mouse Model of Oxygen-Induced Retinopathy*, Australian Society for Medical Research (ASMR), South Australia Annual Scientific Meeting, Adelaide, South Australia. (poster).



Dr Deepa Taranath

Presentations at national meetings

- 2013 AAPOS-SNEC joint meeting, Singapore, July 2013. (attended)
- 2014 ANZ Strabismus Society meeting, Sydney. *Post squint surgery – infection survey conducted at the meeting.*
- 2014 2nd LSD (Lysosomal storage Disorders) Symposium, Sydney. Ocular disease in LSD – Disease surveillance and monitoring.



Professor Keryn Williams

Chairpersonships

- 2013 Annual Scientific Meeting, TSANZ (Canberra)
- 2013 Annual Cornea and Eye Bank Meeting (Adelaide)
- 2013 Annual Scientific Meeting, TSANZ (Canberra)

Invited talks: International and national meetings and universities

- 2013 30th Cornea Society Meeting, Adelaide. *Report from the Australian Corneal Graft Registry, Transplantation tolerance*
- 2013 Royal Australian and New Zealand College of Ophthalmologists Annual Scientific Meeting, Hobart. *Evidence from Registries: corneal graft outcomes*
- 2014 Gordon Research Conference, Biology and Pathobiology of Cornea, California
Gene therapy for corneal dystrophies and disease, where are we?
- 2014 SAHMRI Translational Neuroscience Day (June) *KA Williams. Outcomes of the new partial-thickness corneal grafts: a paradigm shift in practice*
- 2014 Oxford Medical Society Reunion (Australia), Adelaide. *An influx of Australians: the NDS from 1980-*

Presentations at international and national meetings

- 2013 Annual Scientific Meeting, Transplantation Society of Australia and New Zealand, Canberra:
KA Williams, M Lowe, M Keane, D Coster
Outcomes of new partial thickness corneal grafts: a paradigm shift in practice.
KA Williams, RAD Mills, S Klebe, DJ Coster
Comparative outcomes of penetrating and component cell corneal grafts in outbred sheep.
- 2014 Annual Scientific Meeting, TSANZ, Canberra
KA Williams, MC Keane, R Galettis, RAD Mills
Outcomes of corneal transplantation for herpetic eye disease

Presentations by Student Members



Ms Alpana Dave

- 2013 Asia ARVO, Delhi, India, Oct 28-31. *A. Dave, K. Laurie, S. Martin, R. Kumar, S. E. Staffieri, D. Taranath, D. A. Mackey, P. Mitchell, J. J. Wang, J. Craig, K. Burdon, S. Sharma, Contribution of mutations in the EPHA2 gene to inherited cataract in an Australian cohort and molecular analysis of the mutant proteins.*
- 2014 ISER XXI, San Francisco, USA, July 20-24. *A. Dave, K. Laurie, S. Martin, R. Kumar, S. E. Staffieri, D. Taranath, D. A. Mackey, P. Mitchell, J. J. Wang, J. Craig, K. Burdon, S. Sharma, Molecular analysis of congenital cataract causing mutations in the EPHA2 gene.*



Dr Jude Fitzgerald

- 2013 RANZCO 45th Annual Scientific Congress, Hobart. *Fitzgerald J, Law J, Ridge B, Souzeau E, Craig J. Gender and inheritance in advanced glaucoma cases – Australian & New Zealand Registry of Advanced Glaucoma Data.*
- 2013 RANZCO 45th Annual Scientific Congress, Hobart. *Fitzgerald J, Usher B, Craig J, Landers J, Casson R, Graham S, Agar A, Healey P. Baseline data of patients enrolled in PROGRESSA study: Glaucoma suspect and early manifest glaucoma progression trial. (poster)*
- 2013 RANZCO 45th Annual Scientific Congress, Hobart. *Fitzgerald J, Ridge B, Saunders L, White A, Mills R, Craig J. Severe response to periocular or intraocular steroid treatment in Australia and New Zealand – data from the Australian and New Zealand Ophthalmic Surveillance Unit. (poster)*



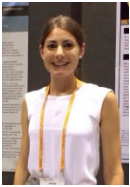
Mr Yazad Irani

- 2013 30th Australia and New Zealand Cornea Society Meeting, Adelaide. *Y Irani, SJP McInnes, NH Voelcker, HM Brereton, KA Williams. Porous silicon scaffolds and new biologics for the treatment of corneal diseases.*
- 2014 31st Australia and New Zealand Cornea Society meeting, Brisbane. *Yazad Irani, Pierre Scotney, Andrew Nash, Sonja Klebe, and Keryn A. Williams. Topically-delivered anti-VEGF-B antibody fragment in a rat model of corneal neovascularization.*
- 2014 International Society for Eye Research XXI Biennial meeting, San Francisco. *Yazad Irani, Yuan Tian, Mengjia Wang, Sonja Klebe, Nicolas H. Voelcker, Jeffery L. Coffey and Keryn A. Williams. 2014. A novel pressed porous silicon-polycaprolactone composite as a dual purpose ophthalmic implant.*



Ms Shari Javadiyan

- 2013 Australian Society of Medical Research (ASMR), Adelaide. *S Javadiyan, S Sharma, K Lower, JE Craig, KP Burdon. Screening of 51 candidate genes in congenital cataract patients using a semiconductor based next generation sequencing method.*
- 2013 Adelaide Next-Generation Sequencing Special Interest Group – Hosted by: Australian Genome Research Facility (AGRF), June.



Dr Georgia Kaidonis

- 2013 Flinders University, Ophthalmology Department Laboratory meeting. *PhD Introductory seminar.*
- 2013 Flinders Medical Centre Ophthalmology Department meeting. *G Kaidonis, Epidemiological and molecular risk factors for diabetic retinopathy blindness: PhD update.*
- 2014 The Association for Research in Vision and Ophthalmology, Annual Meeting (Orlando) *Genome-wide association study for diabetic retinopathy reveals association with genetic variation near the GRB2 gene in multiple populations. (Poster)*



Mr Abraham Kuot

- 2013 Australian Society of Medical Research (ASMR), Adelaide. *A Kuot. Molecular biology and genetics of Fuchs' endothelial corneal dystrophy.*
- 2013 Australian and New Zealand Cornea Society Meeting, Adelaide. *A Kuot. Molecular biology and genetics of Fuchs' endothelial corneal dystrophy.*



Dr Tiger Zhou

- 2014 Genemappers Conference, Barossa Valley. (attended)

Appendix 5

Collaborations, 2013-2014

Dr Kathryn Burdon

- Professor Yuval Yaron - Prenatal Diagnosis Unit - Genetic Institute, Tel Aviv Sourasky Medical Center, Tel Aviv, Israel.
- Dr Salil Lachke - Division of Genetics, Brigham & Women's Hospital, Harvard Medical School, Boston, MA, USA.
- Dr Jac Charlesworth – Menzies Research Institute, University of Tasmania.
- Dr Bang Bui – Department of Optometry & Vision Sciences, University of Melbourne.
- Dr Stuart Macgregor and Dr Grant Montgomery – Queensland Institute for Medical Research.
- Professor Matthew Brown – Diamantina Research Institute, University of Queensland.
- Professor Mark Gillies– Sydney Eye Hospital and University of Sydney.
- Dr Mark Daniell – Royal Melbourne Hospital.
- Professor David Mackey - Lions Eye Institute, WA.
- Professor Paul Mitchell and Professor JieJin Wang - Centre for Eye Research University of Melbourne and Westmead Hospital.
- Prof Colin Willoughby, Queens University, Belfast, Northern Ireland
- International Glaucoma Genetics Consortium (IGGC)
- Consortium for Refractive Error And Myopia (CREAM)

A/Professor Celia Chen

- Professor Neil Miller, Head, Neuro-Ophthalmology and Orbital Unit, Johns Hopkins Hospital, Baltimore, USA.
- Dr Jinhai Huang, Dr Daizong Wen, Dr Shihao Chen, Dr Xiaoyu Wang, Dr Yini Li, Dr Qinmei Wang - School of Optometry and Ophthalmology and Eye Hospital, Wenzhou Medical College, and the Key Laboratory of Vision Science, Ministry of Health P.R. China, Wenzhou, China.
- Dr Mark Paine, Head, Neurology Department, St Vincent's Hospital Melbourne.
- Dr Romesh Markus, Head of Neurology, St. Vincent's Hospital, Sydney.
- Ms Gayle Clarke, Ms Allison Hayes -Neurovisiontech Pty Ltd, Adelaide, South Australia.
- Ms Stacey George, Ms Robyn Vincent, Dr Maria Crotty - Department of Aged Care and Rehabilitation, Repatriation General Hospital, Adelaide, South Australia.
- Mr Andrew Daly, Executive Officer - The Royal Society for the Blind, Adelaide, South Australia.
- Associate Professor John Grigg, Head, Save Sight Institute, University of Sydney, Sydney.
- Ms Helen McCarl, Ms Pamela Klaer - The Multiple Sclerosis Society of South Australia and Northern Territory Inc, Adelaide, South Australia.
- Professor Peter Blumbergs - SA Pathology, Discipline of Pathology, University of Adelaide, Adelaide, South Australia.

Professor Jamie Craig

- Dr Edwin Stone, Howard Hughes Fellow; Professor Lee Alward; Dr John Fingert - Univ of Iowa.
- Dr Francesca Pasutto - Institute of Human Genetics, Friedrich-Alexander-University Erlangen-Nuremberg, Germany.

- Professor Chris Inglehearn; Dr Mansoor Ali; Dr Carmel Toomes - Royal Society Principle Research Fellow, University of Leeds, Leeds, UK.
- Dr Isabelle Russell-Eggitt, Great Ormond St Hospital, UK.
- Dr Michele Sale -Wake Forest University
- Dr Jacinta Charlesworth, Dr Mary Wirtz, Dr John Samples – Menzies Research Institute, University of Tasmania.
- Professor David Mackey - Lions Eye Institute, WA.
- A/Prof Paul Baird – University of Melbourne.
- Prof Paul Mitchell - University of Sydney.
- Dr Alex Hewitt - Centre for Eye Research Australia, University of Melbourne.
- Dr Stewart MacGregor, Dr Peter Visscher, Dr N Martin, Dr G Montgomery - Queensland Institute of Medical Research (QIMR).
- Dr M Brown - University of Queensland.
- Professor Stuart Graham - Macquarie University.
- Associate Professor Paul Healey - University of Sydney.
- Doctor Ashish Agar -Optometry and Vision Science and Centre for Eye Health, University of New South Wales.
- Prof John McAvoy – University of Sydney.
- A/Prof Mark Kirkland and Dr Janet McLeod (Douglas Hocking Institute Geelong), Geelong Hospital.
- Professor Jozef Gecz - Department of paediatrics, University of Adelaide.
- International Glaucoma Genetics Consortium (IGGC)
- Consortium for Refractive Error And Myopia (CREAM)

Dr Miriam Keane

- Over 700 Australian ophthalmologists who contribute data voluntarily to the Australian Corneal Graft Registry.
- Keratoconus Australia, Melbourne.
- Dr Mohammed Ziaei, Western Eye Hospital London, UK

A/Professor Sonja Klebe

- Professor Andrea Yool, Professor in Physiology - Adelaide University

Dr John Landers

- K Martin, N Sarkies, R Bourne, P Watson - Department of Ophthalmology, Addenbrooke's Hospital, Cambridge, United Kingdom and the Vision and Eye Research Unit, Postgraduate Medical Institute, Anglia Ruskin University, Cambridge, United Kingdom.
- Dr Ivan Goldberg, Dr Stuart Graham, Dr Alok Sharma – Eye Associates, Sydney
- Dr Michael Goggin, Queen Elizabeth Hospital, Adelaide

Professor Konrad Pesudovs

- Professor FC Figueiredo - Department of Ophthalmology, Royal Victoria Infirmary, Newcastle upon Tyne, UK.
- Professor DB Elliott - Bradford School of Optometry & Vision Science, University of Bradford, Bradford, West Yorkshire, United Kingdom.
- BA Noble, AJ Morrell, CL Funnell, A Agrawal – National Eye Research Centre (UK).

- Professor RA Applegate, Professor KE Parker, Professor H Cheng, Professor J Marsack - Visual Optics Institute, College of Optometry, University of Houston, Houston, Texas.
- Professor M Lundstrom - The Swedish National Cataract Register (NCR), EyeNet Sweden, Blekinge Hospital, Karlskrona, Sweden.
- Professor Solomon, Dr LE Fernandez de Castro, Professor HP Sandoval, Professor JM Biber, Professor RL Lindstrom - Magill Research Center for Vision Correction, Storm Eye Institute, Medical University of South Carolina, Charleston, South Carolina, USA.
- RC Gibson, TH Mader, A Pass – NASA, USA.
- A Rice, CL Funnell, BA Noble, JL Ball – Department of Ophthalmology, Leeds Teaching Hospital Trust, Leeds, Yorkshire.
- Professor T Kohnen, Professor A Strenger - Department of Ophthalmology, Goethe University, Frankfurt am Main, Germany.
- Professor J Bühren - University of Rochester Eye Institute, Rochester, New York .
- Dr J Thumboo, Dr S-M Saw, Dr TY Wong -Singapore Eye Research Institute, National University of Singapore.
- J Kusmierczyk, I Grabska-Liberek, - Department of Ophthalmology, The Medical Centre of Postgraduate Education, Warsaw Poland.
- Z Maziarz, W Tryniszewski - Department of Radiological and Isotopic Diagnostics and Therapy, Medical University of Lodz, Poland.
- R Gos – Department of Ophthalmology and Sight Rehabilitation, Medical University of Losz, Poland.
- M Banach, J Rysz – Dept. of Nephrology, Hypertension and Family Medicine, Medical University of Lodz, Poland.
- C McAlinden, JE Moore - School of Biomedical Sciences, University of Ulster, Coleraine, United Kingdom.
- DT Tan - Department of Ophthalmology, Yong Loo Lin School of Medicine, National University of Singapore, Singapore.
- M Marella, V Gothwal – Meera and L.B. Deshpande Centre for Sight Enhancement, L.V. Prasad Eye institute, Hyderabad, Andhra Pradesh, India.
- R Bourne, H Hoffman, C Michauf, J Tielsch, M Maguire, D Musch, H Kuper, J Jonas, T Wong, S Ellwein, K Frick, J Leasher, H Quigley, R Dandona, L Dandona – Vision and Hearing Loss Expert Group, Worldwide.
- J Huang, D Wen, S Chen, X Wang, Y Li, Q Wang – Wenzhou Medical College, China.
- S Charalampidou, J Loughmann, J Nolan, J Stack, L Cassidy, S Beatty – Institute of Eye surgery & institute of Vision Research, Whitfield Clinic, Waterford, Ireland.
- M Vogel, M Kernt, C Hirneiss – University of Eye Hospital Munich, Germany.
- E Skiaresis, S Polizzi, G Ravalico, Ospedale Maggiore, Trieste, Italy.
- A Meidani, C Tzavara, C Dimitrakaki, Y Tountas, Center for Health Services Research, Department of Hygiene, Epidemiology and Medical Statistics Medical School, University of Athens, Greece.
- A Mariotte – Primary health Care Unit, Azienda, Veneto, Italy.
- RW Massof – Lions Vision Centre, Johns Hopkins University, Baltimore, US.
- G Rubin – Institute of Ophthalmology, Moorfields Eye Hospital, UK.
- K Gerstmeyer – Gerstmeyer, Eye Clinic Minden, German.
- O Findl – Department of Ophthalmology, Vienna, Austria.

- J de Freitas Santos Paranhos, P Schor – Hospital de Visao, Setor Marista, Brazil.
- C Chase – Western University of Health Sciences, US.
- EL Lamoureux, E Fenwick, T Wong, N Bansback – Centre for Eye Research, University of Melbourne.
- A Daly - Royal Society for the Blind, South Australia.

Dr Shiwani Sharma

- Professor K Xia – Central South University, China.
- Professor Andrea Urbani - University of Rome "Tor Vergata", Italy.
- Doctor Maurizio Ronci - University of South Australia.
- Prof John W McAvoy, Save Sight Institute, University of Sydney
- Dr Anne K Voss, Walter and Eliza Hall Institute of Medical Research
- A/Prof Nick di Girolamo, University of NSW
- Dr Robb de Iongh, University of Melbourne
- Prof Jozef Gecz, Women's and Children's Hospital, North Adelaide

Professor Keryn Williams

- Dr Michael Thiel, Department of Ophthalmology, University of Lucerne, Switzerland
- Professor Leigh Canham, pSivida, Malvern, UK.
- Professor Jeffery Coffey, Texas Christian University, Fort Worth, USA.
- A/Professor Andrew Nash and Dr Pierre Scotney, Bio21 and CSL Ltd, Melbourne.
- Dr Megan Baldwin, Vegedics, Circadian Technologies Ltd, Melbourne.
- A/Professor Donald Anson, Department of Genetic Medicine, Adelaide Women's and Children's Hospital, Adelaide.
- Dr Anna Tsykin and Mr Mark Van Der Hoek, Adelaide Microarray Centre, Adelaide.
- Professor Nico Voelcker, University of SA.
- Dr Stephen Kaye, Dr David Collett, Dr Mark Jones, University of Liverpool, UK
- Dr Mohammed Ziaei, Western Eye Hospital London, UK
- Over 700 Australian ophthalmologists who contribute data voluntarily to the Australian Corneal Graft Registry.

Appendix 6

Awards and Prizes, Recognition, Competitive Fellowships, 2013-2014



Awards and prizes, recognition

- 2015-2016 President-Elect of the American Uveitis Society – Justine Smith
- 2013-2014 President of ARVO – Justine Smith
- 2013 Gold Fellow, ARVO – Justine Smith
- 2013 Plenary Lecture at 2013 ASIA-ARVO Meeting – Justine Smith
- 2013 American Academy of Ophthalmology, Special Recognition Award (awarded to the AAO Leadership Development Program)

Student awards and prizes

- 2013: Flinders University Faculty of Health Sciences Runner-up for Three Minute Thesis Competition 2013 Ms Alpana Dave
- 2013: State Semi-finalist for the Young Investigator Award in Women's and Children's Health, South Australia Ms Alpana Dave
- 2013: Best Paper Presentation Award (Cataractogenesis session), Asia ARVO `Ms Alpana Dave
- 2013: Flinders University Publication Award (\$500), for the paper titled : "Genetic Study of Diabetic Retinopathy: recruitment methodology and analysis of baseline characteristics".
Dr Georgia Kaidonis
- 2014: Flinders University Research Student Conference Travel Grant Ms Alpana Dave
- 2014: Travel Award from International Society for Eye Research Ms Alpana Dave
- 2014: Flinders University Research Student Conference Travel Grant Mr Yazad Irani
- 2014: Travel Award from International Society for Eye Research Mr Yazad Irani
- 2014: Shortlisted for the Members in Training Outstanding Poster Award competition at The Association for Research in Vision and Ophthalmology, Annual Meeting (Orlando), for the poster titled "Genome-wide association study for diabetic retinopathy reveals association with genetic variation near the GRB2 gene in multiple populations". Dr Georgia Kaidonis

Current externally-funded Fellows

- Professor Keryn Williams (NHMRC Principal Research Fellow 2011-15).
- A/Professor Jamie Craig (NHMRC Practitioner Fellow 2014-2018).
- Dr Kathryn Burdon (NHMRC Career Development Fellow 2010-2013).
- Professor Justine Smith (ARC Future Fellow 2014-18)

Appendix 7

Service to Disciplines of Ophthalmology and Optometry

Appukuttan, Binoy***Editorial Board Member***

Current Eye Research

Reviewer of manuscripts

Gene Therapy; PLoS ONE; Investigative Ophthalmology & Visual Science; Molecular Vision; Experimental Eye Research; Current Eye Research; Journal of Ocular Biology Diseases & Informatics

Burdon, Kathryn***Grant Reviewing***

Panel member for Ophthalmic Research Institute of Australia grant round.

Grant reviewer for NHMRC

Reviewer of manuscripts

24 different journals including Molecular Vision, Archives of Ophthalmology, Ophthalmologica, Investigative Ophthalmology and Visual Science, Ophthalmology, European Journal of Human Genetics, BMC Ophthalmology, Human Genetics, and Human Mutation

Membership of professional societies

American Society of Human Genetics (ASHG)

Human Genetics Society of Australasia (HGSA)

Association for Research in Vision and Ophthalmology (ARVO)

Chen, Celia***Reviewer of manuscripts***

Investigation of Ophthalmic and Visual Science, British Journal of Ophthalmology, Clinical and Experimental Ophthalmology, Ophthalmology, Annals of Rheumatology, Neurology, Neuro-ophthalmology, Journal of Neuro-ophthalmology, Topics in Stroke Rehabilitation, Journal of Neurology, Neurosurgery and Psychiatry, Medical Journal of Australia, Australian Family Physician.

Membership/Fellowship

Neuro-Ophthalmology Society of Australia - Vice President

Board consultant, the Royal Society for the Blind Inc.

North American Neuro-Ophthalmology Society – Board member for International Committee

Royal Australian and New Zealand College of Ophthalmologist

American Academy of Ophthalmologist

Association for Vision and Research

Craig, Jamie E.***Committee membership***

SA State Surgical Taskforce

Karl Zeiss Ltd

Australian and New Zealand Glaucoma Interest Group

Ellex Medical Lasers

Professional Membership

Australian and New Zealand Special Interest group (ANZGIG)

Association for Research in Vision and Ophthalmology

Carl Zeiss Ltd

Royal Australian and New Zealand College of Ophthalmologists

Australian and New Zealand Glaucoma Interest Group

Reviewer of grants and manuscripts

NHRMC GRPs, Project and Fellowship applications reviews, and international journal

Associate Editor

Clinical and Experimental Ophthalmology

Keane, Miriam

Reviewer of manuscripts

Australian Journal of Rural Health, BMC Pregnancy and Childbirth. Clinical and Experimental Ophthalmology, Journal of Ophthalmology. Transplant International

Khadka, Jyoti

Reviewer of manuscripts

The Eye (London), Investigative Ophthalmology and Vision Science , Optometry and Vision Science, British Journal of Ophthalmology , Journal of Cataract and Refractive Surgery, Quality of Life Research, Health and Quality of Life Outcome, Clinical and Experimental Optometry, British Medical Journal, BioMed Central Ophthalmology, British Journal of Visual Impairment, Frontiers in Human Neuroscience, PLoS-One, Asia Pacific Journal of Ophthalmology, Patient Related Outcome Measure, Journal of Affective Disorders, Journal of Clinical Ophthalmology

Responsibilities/ Membership

The Australian Society for Medical Research, Australia.

Association of Research in Vision and Ophthalmology, USA.

International Society for Low Vision Research and Rehabilitation, USA.

Professional member of Nepalese Health Professional Council, Nepal.

Nepalese Association of Optometrists, Nepal.

Advisor – Nepal Optometry Students' Society.

Landers, John

Reviewer of manuscripts

Archives of Ophthalmology, British Journal of Ophthalmology, Clinical & Experimental Ophthalmology, Journal of Glaucoma, Journal of Ocular Pharmacology and Therapeutics, Journal of Refractive Surgery, Ophthalmic & Physiological Optics, Epidemiology, Section Editor: Clinical & Experimental Ophthalmology

Research Grant Reviewer

NH & MRC Project Grants

ORIA Grant Reviewer

Committee membership

Secretary/Treasurer: South Australian Branch Royal Australian & New Zealand College of Ophthalmologists.

South Australian Training Program Board Selection.

Klebe, Sonja

Reviewer of manuscripts

Clinical and Experimental Ophthalmology, Clinical and Experimental Optometry, Medical Science Monitor, Pathology, Paediatric Pulmonology, Journal of Postgraduate Medicine

Grant Reviewing

Ophthalmic Research Institute of Australia

Diabetes Australia

NHMRC Project Grants

Committee Membership

Group Leader- Ophthalmic Pathology- Structured Cancer Reporting- Cancer Council of Australasia

Mills, Richard***Committee membership***

Ophthalmic Research Institute of Australia, Research Advisory Committee.

Ophthalmic Research Institute of Australia, Director

Pesudovs, Konrad***Elected Administrative Appointments***

Councillor, The Australian College of Optometry

Committee member, Steering Committee for the Australian College of Optometry Ocular

Therapeutics Course, Australian College of Optometry.

Memberships of Committees for Major International Projects

A Prospective Study of Satisfaction Level and Quality of Life after LASIK..

The Global Burden of Diseases, Injuries, and Risk Factors Study 2008, Vision and Hearing Loss
Expert Group.

Swedish National Cataract Register Steering Group.

The International Consortium for Health Outcomes Measurement (ICHOM) Ophthalmology Group.
Health Outcomes Measurement for Cataract Surgery.

Membership of Professional Bodies

American Academy of Optometry

American Society of Cataract and Refractive Surgery

Association for Vision Research in Ophthalmology

Australian College of Optometry

Cornea and Contact Lens Society of Australia

European Society of Cataract and Refractive Surgery

International Ophthalmic Microsurgical Study Group

Optometrists Association Australia

Editorial Duties

Full Editorial Board Memberships

Journal of Refractive Surgery

Journal of Cataract & Refractive Surgery

Clinical & Experimental Optometry

Archives of Medical Science (Associate Editor)

Journal of Optometry

The Open Translational Medicine Journal

Ophthalmic and Physiological Optics

Optometry & Vision Science

Quality of Life Special Issue Optometry & Vision Science

Refereeing

British Journal of Ophthalmology, Clinical and Experimental Optometry, Optometry and Vision
Science, Ophthalmic and Physiological Optics, Investigative Ophthalmology and Visual Science,
Journal of Cataract and Refractive Surgery, Journal of Refractive Surgery, Ophthalmology,
Archives of Physical Medicine and Rehabilitation, Clinical and Experimental Ophthalmology,
Graefe's Archive of Clinical & Experimental Ophthalmology, Gerontology, Contact Lens and
Anterior Eye, International Education Journal, Comprehensive Ophthalmology Update, Vision
Research, American Journal of Ophthalmology, Current Eye Research, Expert Review of
Pharmacoeconomics & Outcomes, Cornea, The Medical Journal of Australia, Ophthalmic
Epidemiology, Pain, BMC Ophthalmology, Medical Science Monitor, Archives of Ophthalmology,
Health and Quality of Life Outcomes, European Journal of Pain, Case Reports and Clinical Practice
Review, BMC Health Services Research, Ophthalmic Research, Archives of Medical Science,
American Journal of Case Reports, Therapeutics and Clinical Risk Management, The Open
Translational Medicine Journal, The Journal of Vision, BMC Medical Research Methodology,

Quality of Life Research, Eye and Contact Lens, Biomedizinische Technik / Biomedical Engineering, Sierra Leone Journal of Biomedical Research, Middle East Africa Journal of Ophthalmology, Ophthalmologica, Archives of Gerontology and Geriatrics, BMC Medical Education, BMC Geriatrics

National Health and Medical Research Council Activity

Project grant reviewing
Postgraduate scholarship application reviewing
Program grant reviewing
Member NHMRC Research Translation Faculty

Other Granting Agencies

Ophthalmic Research Institute of Australia
FMC Foundation
The Dunhill Medical Trust
Fight for Sight
Australian Government Cooperative Research Centres (CRC) Program
Guide Dogs for the Blind Association (UK)
Australian Research Council
Diabetes Australia Research Trust

Sharma, Shiwani

Committee membership

Animal Ethics Review Sub Committee, Flinders University and Flinders Medical Centre
Flinders University delegate to the Central South University, Changsha, China

Memberships of Professional Societies

International Society for Eye Research.
Australia and New Zealand Society of Biochemists and Molecular Biologists.

Research Grants Reviewed

National grants of the Ophthalmic Research Institute of Australia
Annual grants of the Flinders Institute of Health and Medical Research
National Health and Medical Research Council (NHMRC) Project grant
NHMRC Program grant
PhD studentship grant of the Fight for Sight, London, UK
NHMRC project grant

Research articles Reviewed

International Journal of Ophthalmology
PLoS One
Journal of Zhejiang University-SCIENCE B
BMC Ophthalmology

Community presentations

How are cataracts caused in both, the young and the elderly? Donors' Day, Flinders Medical Centre Foundation, February 4.

Smith, Justine

Membership of Professional Societies

Royal Australian and New Zealand College of Ophthalmologists
Royal Australasian College of Surgeons
Australian Society for Medical Research
Australasian Society for Immunology
American Academy of Ophthalmology
Association for Research in Vision and Ophthalmology
International Ocular Inflammation Society

International Uveitis Study Group
 American Association of Immunologists
 American Uveitis Society

Editorial Board Membership

Clinical and Experimental Ophthalmology (Uveitis Section Editor)
 Ophthalmic Research
 Asia-Pacific Journal of Ophthalmology
 Investigative Ophthalmology & Visual Science
 Guest editorial board member for: Ocular Immunology & Inflammation

Reviewer for Awards

International Jury for Cora Verhagen Prize: Award for Best Ocular Immunology Presentation at
 Association for Research in Vision and Ophthalmology Annual Meeting (exc 2014)

Committee Membership

International Council, International Ocular Inflammation Society
 American Uveitis Society Executive Committee (AAO Education Liaison)
 Board of Trustees, Association for Research in Vision and Ophthalmology (IM Trustee)
 Professional Development & Education Committee, Association for Research in Vision and
 Ophthalmology (Trustee Liaison)
 Council, American Academy of Ophthalmology
 Spring Meeting Chairman, American Uveitis Society
 Continuing Medical Education Committee, Association for Research in Vision and Ophthalmology
 (Trustee Liaison)
 Independent Data & Safety Monitoring Committee for Randomized Clinical Trial of Efficacy of
 Adalimumab in Paediatric Uveitis Secondary to Juvenile Idiopathic Arthritis. Funded by
 National Institute for Health Research & Arthritis Research UK (United Kingdom)
 President, Association for Research in Vision and Ophthalmology
 Executive Committee, Association for Research in Vision and Ophthalmology
 Mentor, International Society for Eye Research Mentoring Program
 Open Access Committee, Association for Research in Vision and Ophthalmology
 Strategic Plan “Global Presence” Steering Committee
 Chair, Member-in-Training Board Member Selection Committee, Association for Research in
 Vision and Ophthalmology
 Deputy Council Section Leader, American Academy of Ophthalmology
 International Council of Ophthalmology General Assembly
 Advisory Committee to Board of Directors, International Council of Ophthalmology (representing
 “Research”)
 Laureate Award Selection Committee, American Academy of Ophthalmology
 Task Force on Board-Council Communications, American Academy of Ophthalmology

Meetings/Events Organized

American Uveitis Society Spring Meeting. Seattle, WA, USA. 2013.
 American Uveitis Society Breakfast with the Experts Roundtable Program. American Academy of
 Ophthalmology Annual Meeting. New Orleans, LA, USA. 2013.
 American Uveitis Society Spring Meeting. Orlando, FL, USA. 2014.
 ARVO Education Conference. Ocular Immunity, Autoimmunity and Inflammation. Fort
 Lauderdale, FL, USA. To be held October 2014.
 American Uveitis Society Breakfast with the Experts Roundtable Program, American Academy of
 Ophthalmology Annual Meeting. Chicago, IL, USA. to be held October 2014.

Consulting Activities

“Design of POC studies for dry AMD” Advisory Board. Teva Pharmaceutical Industries.
 Hamburg.
 “CDP for intravitreal cyclosporine” Advisory Board. Teva Pharmaceutical Industries. Hamburg.

Stempel, Andrew***Member Organizations***

Association for Research in Vision and Ophthalmology (ARVO), Rockville, Maryland, USA

Williams, Keryn***Community Involvement***

SA Young Tall Poppies Selection Panel 2013

Presentation, Registries Special Interest Group, SAHMRI

Presentation (2 hours) to Year 11 students at the Australian Mathematics and Science School

International committee membership

International Advisory Board, Cochrane Eyes and Vision Group

National/State professional involvement

Eye Bank of South Australia Advisory Committee

DonateLife Registry Heads Committee

Organization of scientific meetings and courses

Local Organising Committee, ANZ Cornea Society Annual Meeting, Adelaide

Local Organising Committee, Evidence-Based Ophthalmology Workshop, Hobart

Peer Reviewing

Member, Charles and Sylvia Viertel Medical Research Advisory Board (50 grants/year)

Chair, NHMRC Early Career Fellowships Panel (30-40 applications/year) 2013, 2014

Member, NHMRC Grants Review Panel (Neuroscience GRP4C) 2014

Member NHMRC Research Translation Faculty

Reviewer of grants for the NHMRC, ORIA, MRC, Fight for Sight, and other bodies

Reviewer for international journals (approx. 20-25 articles reviewed each year)

Membership of professional societies

The Transplantation Society (International)

The Transplantation Society of Australia and New Zealand (TSANZ)

National Association of Research Fellows of the NH&MRC (NARF)

TSANZ-sponsored Special Interest Group, Cornea and Eye Banking

Australian Society for Medical Research (ASMR)

STUDENT MEMBERS**Irani, Yazad*****Committees***

Student representative, Flinders University Faculty of Health Sciences Research Committee.

Founding Secretary, Flinders University Postgraduate Society, Faculty of Medicine Nursing and Health Sciences

Professional Associations

International Society for Eye Research

Australian Gene Therapy Society

Australian Society for Medical Research

Australian and New Zealand Cornea Society

Javadiyan, Shari

Committee member

“Post-graduate Research Students in the School of Medicine (PRISM)” Society

Kaidonis, Georgia

Professional Affiliations

Medical Board of South Australia

Australian Medical Association

RMO society member, Flinders Medical Centre

Appendix 8 Centre Weekly Seminar Program Lists, 2013-2014

OPHTHALMOLOGY SEMINAR PROGRAM 2013

DATE	SPEAKER	PRESENTATION
26 March	A/Prof Richard Mills & A/Prof Jamie Craig	Department Update
2 April	Prof Justine Smith Ophthal, FUSA	Mechanisms of ocular toxoplasmosis
9 April	Dr Raymond Loh Ophthal, FMC	Cross-linking for Keratoconus – signs & evidence.
16 April	Dr John Landers Ophthal, FMC	Challenge tests in Glaucoma
23 April	Dr.P.Sundaresan Department of Genetics Dr. G.Venkataswamy Eye Research Institute Aravind Eye Hospital	Molecular Genetics of Glaucoma
30 April	Dr Nick Mabarrack Ophthal, FMC	Recent thymic origin differentiation & lifespan of regulatory T cells
7 May	No meeting (ARVO)	
14 May	A/Prof Richard Mills & A/Prof Jamie Craig	ARVO report
21 May	Prof Tom Gordon Immunology, FUSA	Secreted proteomic repertoires in primary Sjogren's syndrome
28 May	No meeting	
4 June	Dr Aanchal Gupta Ophthalmology, QEH	My Canadian Fellowship
11 June	Marg Martin, Director EPAS Adoption Dr Sepehr Shakib, Director, Department of Clinical Pharmacology RAH & EPAS Senior Medical lead	Overview of the Enterprise Patient Administration System (EPAS)
18 June	A/Prof David Turner Haematology & Genetic Pathology, FUSA	Off the beaten track: Ear health and hearing in school-aged children in the APY Lands; do swimming pools make a difference?
25 June	Dr Stephen Graves Dept of Surgery, FMC	Benefits and future trends of National Arthroplasty Registries
2 July	Prof Karen Reynolds Sch of Computer Science, Engineering & Mathematics, FUSA	Medical devices – Projects with vowels
9 July	Dr Tim Greenwell Ophthal, FMC	Design matters: Improving user experience in Health IT
16 July	Semester Break	
23 July	Semester Break	
30 July	Dr Lucy Goold Ophthal, FMC	The Corneal Endothelium
6 August	Dr Jennifer Tieman CareSearch Director, FUSA	Supporting clinical practice: examples from the CareSearch website and palliative care
13 August	Dr Rachel Popelka-Filcoff	Views into the Past: Spectroscopic Characterisation of Aboriginal Australian PigmentsTBA
20 August	Dr Diego Garcia-Bellido Sprigg Geobiology Centre Uni of Adelaide	500 million-year-old eyes and other exceptional fossils from the Cambrian
27 August	Prof Alex Gallus Dept of Haematology, FMC	New Oral Anticoagulants (Clotting, Bleeding & Confusion) PA – Britta Richards

3 September	Prof Colin Raston Aust Research Council APF Sch of Chemical & Physical Sciences, FUSA	Fabricating Functional Nano-Materials using thin film microfluidics & phospholipids
10 September	Dr Anna Vnuk Clinical Skills Deputy Director, Years 1 & 2, SOM, FUSA	Going through the motions
17 September	Abraham Kuot, Yazad Irani, Shari Javadiyan, Georgia Kaidonis	PhD hour
24 September	Dr Jonathan Clarke Dept of Anaesthesia, FMC	Update on Local Anaesthetic Techniques
1 October	Dr Tobias Loetscher Dept of Social & Behavioural Sciences, FUSA	Spatial Neglect: When half is whole
8 October	No meeting	
15 October	Dr Sudha Cugati Ophthal, FMC	Retinal pigment epithelial detachment – Pathophysiology, clinical features & management
22 October	Dr Alex Brown Leader, Aboriginal Research Unit, SAHMRI	Building Aboriginal Research Programs
29 October	Mrs Lynne Loh Optometrist	Compliance to Glaucoma Medication
5 November	RANZCO meeting	
12 November	Prof Adrian Linacre SA Chair in Forensic Science Biological Sciences, FUSA	Blood Pattern Analysis in crime scene reconstruction – tales from Taggart-land
19 November	Dr Jeff Bowden Regional Head of Respiratory & Sleep Services, SALHN	The Effects of Altitude on Health
26 November	Dr John Landers Ophthal, FMC	In Country Glaucoma Fellowship: Laos

OPHTHALMOLOGY SEMINAR PROGRAM 2014

DATE	SPEAKER	PRESENTATION
11 March	Dr David Andrews RANZCO	RANZCO's Role in Research
18 March	Richard Mills & Jamie Craig Ophthalmology	Department Update
25 March	Dr Jane Wells Ophthalmology	Ophthalmology Education: Helping students "see the light"
1 April	Dr Paul Badenoch Ophthalmology	Update on Diagnostic Ocular Microbiology
8 April	Ms Vanessa Rowley Manager Casemix/ABF SALHN	Independent Hospital Pricing Authority
15 April	No meeting	
22 April	Ms Angela Chappell & Mrs Margaret Philpott Ophthalmology	Where There's a Will, There's a Way Passage to India
29 April	Prof Keryn Williams Ophthalmology/FCOEVR	Report from Gordon Conference (Cornea) 2014
6 May	Prof Tim Neild Dep Director, Medical Program, FUSA	A Quick Guide to the MD Program
13 May	Prof Jamie Craig Ophthalmology/FCOEVR	ARVO 2014 Update
20 May	Prof Ross McKinnon	Drug Discovery and Academia
27 May	Dr Mona Awadalla Ophthalmology	Report from Genemappers 2014
3 June	A/Prof Briony Forbes Discipline of Medical Biochemistry/Centre for Neuroscience, SOM	Mitogenic Signalling via the Insulin Receptor and its Role in Cancer.

10 June	A/Prof Geraint Rogers Director, Microbiome Research SAHMRI	The Ocular Microbiome
17 June	Prof Neil Dear Director, Research Support Services, SAHMRI	Discussion on the SAHMRI Animal Facility & potential collaborations
24 June	A/Prop John Kaidonis School of Dentistry, Adel Uni	Oral biofilms in health and disease
1 July	Dr Georgia Kaidonis PhD Student, FCOEVR	ARVO 2014 review: Intravitreal injections for the treatment of Diabetic Macular Edema
8 July	Semester Break	
15 July	Semester Break	
22 July	Dr Jyoti Khadka Optometry & Vision Science, FUSA	Development of a Novel System to Measure Quality of Life in Ophthal: The Eye-Tem Bank
29 July	Dr Owen Siggs Ophthalmology	Mutagenesis & Mammalian Immunity
5 August	Mrs Angela Chappell Flinders Eye Clinic	My RetCAM Study Tour, Canada 2014
12 August	Dr Mark Hassall Flinders Eye Clinic	TBA
19 August	A/Prof David Lynn Biomedical Informatics FUSA/SAHMRI	TBA
26 August	Dr Bastien Llamas ARC Senior Research Assoc Ecology & Evolutionary Biology, Uni of Adelaide	TBA
2 September	Dr Chris Powell Medical Student, FMC	TBA
9 September	David Jacobs Optometry & Vision Science, FUSA	TBA
16 September	Prof Melissa Brown Head, Molecular Micro Group Assoc Dean (Research)/SOBS	To be confirmed
23 September	Dr Jill Carr Microbiology and Infectious Diseases. Flinders Medical Science and Technology	TBA
30 September		
7 October		
14 October	A/Prof Lynley Bradnam A/ Professor of Physiotherapy SOHS, Applied Brain Research Laboratory, Center for Neuroscience	TBA
21 October		
28 October	Dr Peter van Wijngaarden CJ Martin Fellow & Retinal Fellow Royal Vic Eye & Ear Hospital; CERA	TBA
4 November	Abraham Kuot	Final PhD seminar
11 November	Alpana Dave	Final PhD seminar
18 November	Yazad Irani	Final PhD seminar
25 November	RANZCO Conference	
2 December		
9 December		
16 December		