

# EVACUATION DIAGRAM

## 182 VICTORIA SQUARE

ON BEING WARNED BY  
**BEEP-BEEP**  
**"STANDBY"**

CEASE INTER &  
ACROSS FLOOR  
MOVEMENT

SECURE CLASSIFIED  
MATERIAL

AWAIT FURTHER  
INSTRUCTIONS








ON BEING WARNED BY  
**WHOOOP-WHOOOP**  
**"EVACUATE"**

PROCEED VIA THE  
SAFEST ROUTE TO  
THE ASSEMBLY AREA

ASSIST PERSONS WITH  
DISABILITIES AS  
NECESSARY

DO NOT RE-ENTER  
THE BUILDING UNTIL  
INSTRUCTED BY  
AUTHORITIES TO DO SO

### KEY

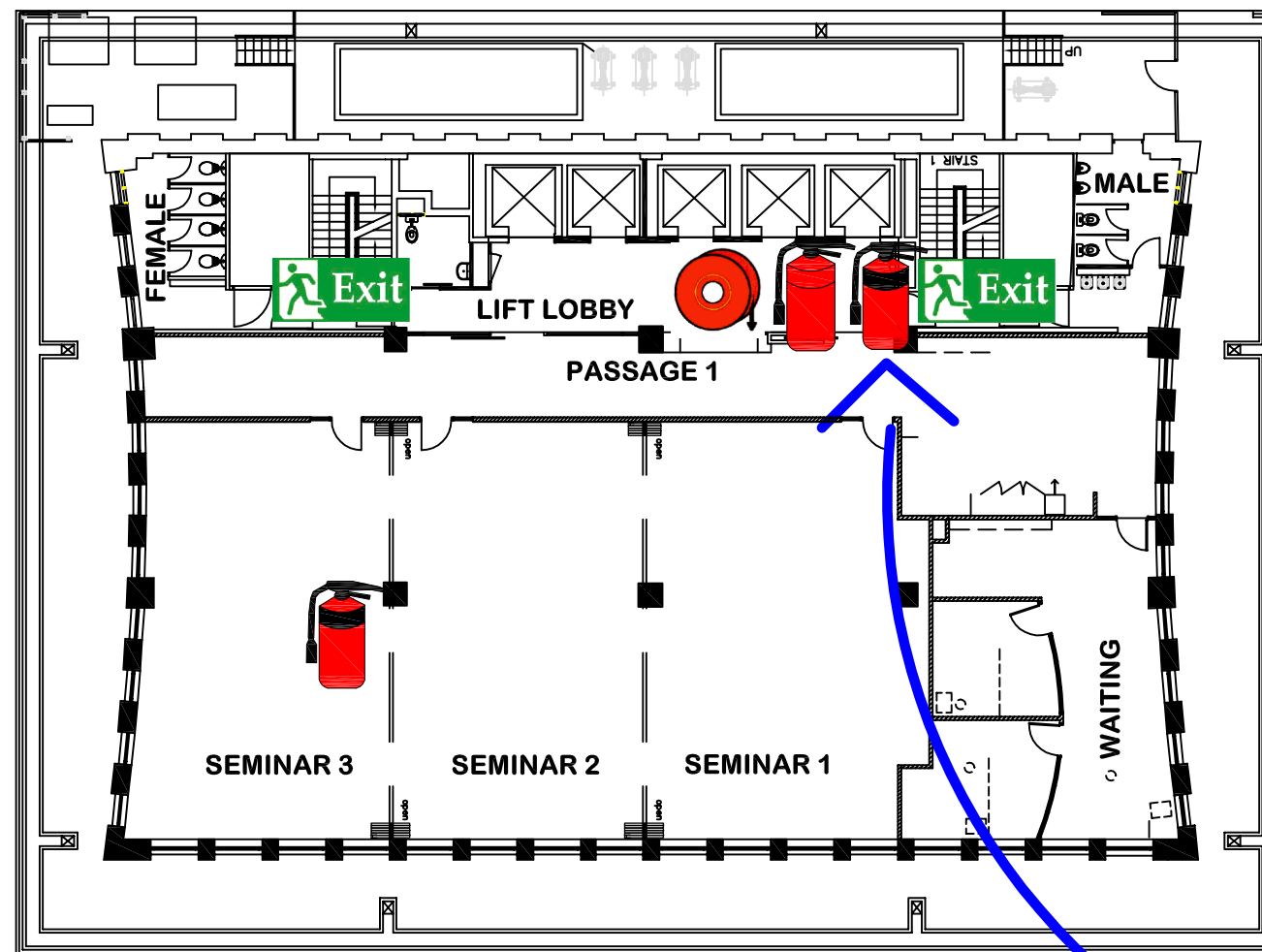
-  AIR WATER EXTINGUISHER
-  CO2 EXTINGUISHER
-  DRY CHEMICAL EXTINGUISHER
-  FIRE HOSE REEL
-  EMERGENCY EXIT
-  ASSEMBLY AREA
-  FIRE BLANKET

DRAWING DATE 7/08/2011

IN THE EVENT OF EITHER WARNING SIGNAL  
SOUNDING OUTSIDE OF NORMAL WORKING  
HOURS ALL OCCUPANTS SHOULD EVACUATE  
IMMEDIATELY

IN THE EVENT OF FIRE ALARM DO NOT USE LIFTS

### LEVEL 2



FLINDERS STREET

**YOU ARE HERE**

VICTORIA SQUARE

ASSEMBLY  
AREA  
ADJACENT  
STATUE NORTH  
EAST CORNER  
VICTORIA SQ