



**Flinders
University**

College of Education,
Psychology & Social Work

PROFESSIONAL SERVICES DIRECTORY

PROFESSIONAL SERVICES DIRECTORY

COLLEGE OF EDUCATION, PSYCHOLOGY & SOCIAL WORK

The College of Education, Psychology and Social Work is a place for people committed to social justice ideals and social transformation.

Our work spans the broad spectrum of education, psychology, social work and sport study areas with a strong focus on the contemporary issues of today.

This professional services guide will help you get to know our professional staff services and assist in directing you to the right staff member.

Many of our College services can be accessed via our online request tool '[Service One](#)' via your OKTA dashboard.

CONTACT US

Call us: (08) 8201 7800

Email us: EPSWenquiries@flinders.edu.au

Visit us:

College of Education, Psychology and Social Work
Level 4, Room 469, Education Building
Bedford Park

PROFESSIONAL SERVICES DIRECTORY

CONTENTS

COLLEGE EXECUTIVE LEADERSHIP TEAM AND COLLEGE SERVICES

COLLEGE EXECUTIVE LEADERSHIP TEAM

COLLEGE EXECUTIVE & OPERATIONS SUPPORT

COLLEGE PEOPLE & CULTURE

COLLEGE NON-RESEARCH CONTRACTS

COLLEGE FINANCE

COLLEGE INTERNATIONAL RECRUITMENT & ENGAGEMENT

COLLEGE MARKETING & COMMUNICATIONS

COLLEGE ALUMNI & ADVANCEMENT

COLLEGE WORK, HEALTH & SAFETY

COLLEGE PROPERTY, FACILITIES & DEVELOPMENT

COLLEGE PROJECT TEAM

COLLEGE ADMINISTRATIVE SERVICES

STUDENT ADMINISTRATIVE SERVICES

WORK INTEGRATED LEARNING

CAREER READINESS

INDIGENOUS STUDENT LIAISON

RESEARCH DEVELOPMENT & SUPPORT

ONLINE LEARNING & TEACHING

SPORT GYM

COLLEGE EXECUTIVE LEADERSHIP TEAM AND COLLEGE SERVICES

Located within the Education building, you will find the Executive Leadership Team, Executive & Operations Support, Finance, Marketing, People & Culture, and other senior business leads.

COLLEGE EXECUTIVE LEADERSHIP TEAM



PROFESSOR DEBORAH WEST
VICE-PRESIDENT & EXECUTIVE DEAN

cepsw.vped@flinders.edu.au



PROFESSOR MARY KATSIKITIS
DEAN (PEOPLE & RESOURCES)

cepsw.deanpandr@flinders.edu.au



PROFESSOR PABLO MUNGUIA
DEAN (EDUCATION)

cepsw.deaneducation@flinders.edu.au



PROFESSOR ZSOLT DEMETROVICS
INTERIM DEAN (RESEARCH)

cepsw.deanresearch@flinders.edu.au



MS GRACE CONNOLLY
DIRECTOR, COLLEGE SERVICES

cepsw.director@flinders.edu.au

PROFESSIONAL SERVICES DIRECTORY

COLLEGE EXECUTIVE & OPERATIONS SUPPORT

The Executive and Operations Support Team provide support services to the Executive Leadership Team and operational support to the whole College. Their services range from committee and project support, executive management, procurement, mail, equipment and internal events. Contact the team via email at cepsw.operations@flinders.edu.au.



HELEN SCHARPF

COLLEGE EXECUTIVE OFFICER

The Executive Officer provides advice, analysis, and support to the Executive Leadership Team and leadership to the College operations support staff as well as providing high-level coordination and support to priority projects and initiatives in the College.

helen.scharpf@flinders.edu.au
08 8201 5825.



ELIZABETH TRAEGER

COLLEGE EXECUTIVE SUPPORT OFFICER

Provides executive support to Professor Mary Katsikitis, Dean (People & Resources)

cepsw.deanpandr@flinders.edu.au
08 8201 3010



CLARE VENTURI

SENIOR PROJECT OFFICER

Clare provides executive support to Professor Pablo Munguia, Dean (Education)

clare.venturi@flinders.edu.au
08 8201 9084



FIONA MCNALLY

COLLEGE EXECUTIVE SUPPORT OFFICER

Fiona provides executive support to Professor Deboarh West Vice-President and Executive Dean

fiona.mcnally@flinders.edu.au
08 8291 4958

PROFESSIONAL SERVICES DIRECTORY



TRACY WELLEN
SENIOR COLLEGE SUPPORT OFFICER

Supports the Education discipline.

tracy.wellen@flinders.edu.au
08 7421 9386



KRIS WYNN
SENIOR COLLEGE SUPPORT OFFICER

Supports the Social Work and Psychology disciplines

kris.wynn@flinders.edu.au
08 8432 4852



RENEE MAWBY-DUTHY
COLLEGE SUPPORT OFFICER

reneemawbyduthy@flinders.edu.au
08 8201 3129



SHANNON GUNN
COLLEGE SUPPORT OFFICER

shannon.gunn@flinders.edu.au
(08) 7221 8025

PROFESSIONAL SERVICES DIRECTORY

COLLEGE PEOPLE & CULTURE

People and Culture support strategic staff related issues, including recruitment, employee relations, case management and change. They also mentor, coach and train supervisors on P&C related processes, including interpretation and advice on the University's Enterprise Agreement.

Contact the team via email at cepsw.pc@flinders.edu.au.



JACQUELINE ROSA
PEOPLE & CULTURE BUSINESS PARTNER

cepsw.pc@flinders.edu.au

08 8201 3746

COLLEGE NON-RESEARCH CONTRACTS

The Contract Officer can assist with any contract legally binding on the University such as consultancies, service agreements, Memorandums of Understanding, partnership agreements etc., liaise with Legal to review and assist with signatories. Contact the team by submitting a ServiceOne.



SYLVIA CORNELIUS
CONTRACTS OFFICER

sylvia.cornelius@flinders.edu.au

cepsw.contracts@flinders.edu.au

08 7421 9377

PROFESSIONAL SERVICES DIRECTORY

COLLEGE FINANCE

The College Finance team provide strategic financial support to the College in the form of financial modelling, analysis and reports, and advice on policy and the preparation of budget, forecast, rolling projections and variance reporting. Other responsibilities include untied research accounts and co-investments, financial advice on accounts, invoicing, FBT, GST and reimbursements.

Contact the team via email at cepsw.finance@flinders.edu.au.



JENNIFER HAMILTON
FINANCE BUSINESS PARTNER

jennifer.hamilton@flinders.edu.au
08 8201 4860



KYLIE DALLISSON
FINANCIAL ANALYST

kylie.dallisson@flinders.edu.au
08 8201 5027



TRACY KNIGHT
GRANTS FINANCE OFFICER

tracy.knight@flinders.edu.au
08 8201 5044



MANDY GILL
FINANCE SERVICES OFFICER

mandy.gill@flinders.edu.au
08 8432 4556

PROFESSIONAL SERVICES DIRECTORY

COLLEGE INTERNATIONAL RECRUITMENT & ENGAGEMENT

Julie is responsible for working with the College on the development and implementation of the international strategic plan, growing CEPSW international partnerships with recruitment outcomes and advising the college of market intelligence for opportunities to grow international enrolments. She represents CEPSW when visiting both international partners and commercial partners, assessing international opportunities for the College and liaising between Flinders International and CEPSW to ensure alignment of priorities and focus.



JULIE INGLIS
MANAGER, INTERNATIONAL PARTNERSHIPS

julie.inglis@flinders.edu.au
08 8201 5209

COLLEGE ALUMNI & ADVANCEMENT

Rebecca collaborates with College staff, targets and shares alumni stories, plans alumni events and provides professional development for alumni. She also obtains alumni feedback, celebrates achievements and celebrates College milestones.



REBECCA ESTEVE
ALUMNI & ADVANCEMENT PARTNER

rebecca.esteve@flinders.edu.au
08 7421 9765

Heidi develops and stewards relationships to open up new philanthropic opportunities and monetary donations to enable and support research activities across the College of Education, Psychology & Social Work.



HEIDI WARREN
ADVANCEMENT
MANAGER

heidi.warren@flinders.edu.au
08 8201 7979

PROFESSIONAL SERVICES DIRECTORY

COLLEGE MARKETING & COMMUNICATIONS

Marketing and events aligning with College strategic plans, College marketing and communication plan, develop written content for a wide range of purposes, increase the profile of the College research activities, College Website text, dissemination of newsworthy activities and College strategic engagement with University events.

Contact the team via email at cepsw.marcomms@flinders.edu.au



KELLY MEIER
MARKETING & COMMUNICATIONS
PARTNER

kelly.meier@flinders.edu.au
08 8201 5307



SARAH FAZZINI
DIGITAL CONTENT PRODUCER

sarah.fazzini@flinders.edu.au
08 8201 2814



Sally Lauder
Media Advisor

sally.lauder@flinders.edu.au
08 8201 2888

PROFESSIONAL SERVICES DIRECTORY

WORK, HEALTH & SAFETY

All activities relating to WHS including Ergonomic advice and workstation assessments, advice on hazard Management, WHS Compliance assessment, investigate/report on accidents/incidents, rehabilitation of injured staff, Employee Assistance Program (EAP), Health & Wellbeing activities, WHS Training, Elections for Health & Safety Representatives, Legislation advice, development and advice on policy and procedures.



ANDREW THORNTON
SENIOR WORK, HEALTH AND SAFETY OFFICER

andrew.thornton@flinders.edu.au
08 8201 5638

PROPERTY, FACILITIES & DEVELOPMENT

Helen is the face-to-face liaison between the PF&D division and the College, providing campus presentation and maintenance, infrastructure and space planning, capital development and delivery, Campus retail management, concierge services, fleet management and campus transport, car parking, Security and access, mail and courier services.

Please submit requests via ServiceOne.



HELEN YATES
COLLEGE SPACE AND PROJECTS OFFICER

helen.yates@flinders.edu.au
08 8201 2022

PROFESSIONAL SERVICES DIRECTORY

COLLEGE PROJECT TEAM

The College Project Team provides strategic support to the Dean of Education and the Director of College Services, in leading and managing projects secured through external funding. These initiatives focus on developing and refining the College's disciplines, business processes, student experience, driving excellence and innovation across the institution.



TINA TUTIC

SENIOR PROJECT OFFICER - Social Work

Tina provides project support to Professor Pablo Munguia, Dean (Education).

tina.tutic@flinders.edu.au
08 8291 4951



JANINE EATON

PROJECT OFFICER - Social Work

Janine provides project support to Professor Pablo Munguia, Dean (Education).

janine.eaton@flinders.edu.au
08 8201 7965



MEGAN SIGLEY

SENIOR PROJECT OFFICER - Early Childhood Education

Megan provides project support to Professor Pablo Munguia, Dean (Education).

megan.sigley@flinders.edu.au
08 8201 7774



SENIOR PROJECT OFFICER - Psychology Internships

mppinternship@flinders.edu.au
08 8201 3010



SASH KERTES

SENIOR PROJECT OFFICER - Education

Sash works with teaching staff in the college to design student-centred technology-enhanced learning and teaching strategies.

sash.kertes@flinders.edu.au
08 7421 7891

PROFESSIONAL SERVICES DIRECTORY

COLLEGE ADMINISTRATIVE SERVICES

The Student Administrative and Work Integrated Learning teams provide a wide range of support to both academics and students with regards to topic management, class allocation, timetabling, student support, placement coordination and facilitation.

Contact the team via email at EPSWenquiries@flinders.edu.au or via phone on 08 8201 7800.

STUDENT ADMINISTRATION SERVICES



ILIYA MAROVICH-OLD
COLLEGE MANAGER

Iliya is responsible for leading the operations of the SAS team and driving improvements within the College.

iliya.marovichold@flinders.edu.au
08 8201 5939



CAROLINE ROBINSON
COORDINATOR, ENROLMENT AND STUDENT PROGRESS

Caroline coordinates and provides enrolment and student progress services within the College.

caroline.robinson@flinders.edu.au
08 8201 3347

PROFESSIONAL SERVICES DIRECTORY

ENROLMENT & COURSE ADVISORS

Our ECAs provide students with high-quality enrolment and course planning support, including giving advice and specialised guidance on complex enquiries. They manage student study plans, credit applications and course completions.

Contact the team via email at cepsw.eca@flinders.edu.au

Nathan Betts | Alex Feng | Heidi Barber

Jacqui Muirhead | Annie Taverner



EDUCATION RESOURCE OFFICERS

Our Education Resource Officers support resources scheduling activities, including the ongoing maintenance of the University timetable. They manage class registration activities and administration relating to the engagement of casual academic staff.

Contact the team via email at cepsw.timetabling@flinders.edu.au

Jacqui Schwerdt | Daisy Autio



PROFESSIONAL SERVICES DIRECTORY

STUDENT PROGRESS & ASSESSMENT ADVISORS

Our SPAAs are responsible for providing students and staff with support relating to assessment, examinations, results entry, deferred and supplementary exams, student progress/ at risk, prizes and awards processes and coursework thesis monitoring and support.

Contact the team via email at cepsw.spaa@flinders.edu.au

Staff: Elle Errington | Elle Jones | Brett Carter



STUDENT ADMINISTRATION SERVICES ASSISTANTS

The Student Administration Services Assistants provide a wide variety of administrative services for student, teaching and learning activities to students and staff.

Contact the team via email at cepsw.enquiries@flinders.edu.au

Danni Gray | Gill Rann | Sally Kay



PROFESSIONAL SERVICES DIRECTORY

WORK INTEGRATED LEARNING

The Work Integrated Learning - or placements - team liaise with industries regarding potential student placement opportunities, requirements and manage related contracts. They promote activities to students through information sessions, email, social media, in lectures and events. They also prepare students and manage their requirements for placement, coordinate compliance checking, records and reports, and respond to student queries during placement, and seek and action post-placement feedback from industry partners.

Contact the team via email at cepsw.placements@flinders.edu.au or via phone on 08 8201 5410.



MICHELLE HARVEY

INTRIM TEAM LEADER

Michelle is responsible for coordinating the operations of the Work Integrated Learning (WIL) team and facilitating outcomes for students and our partners.

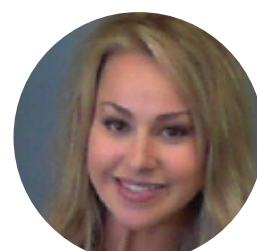
michelle.harvey@flinders.edu.au

08 8201 5512

WIL TEAM MEMBERS

SUPPORT OFFICERS

Andy Bryer | Annalise Hogan | Kerry Braun | Shannon Welch
Kim Lauwrens | Melinda Nathan | Kristy Jenkinson



PROFESSIONAL SERVICES DIRECTORY

CAREER READINESS

Facilitating the development of career-ready graduates through the management of the university's work-integrated learning and career education programs.

Rianna Lopez | Barbara Doherty



INDIGENOUS STUDENT LIAISON



REBEKAH CARR

Indigenous Student Liaison and Support Officer

rebekah.carr@flinders.edu.au

extension: 29909

ONLINE LEARNING & TEACHING

The Online Learning and Teaching team leads and supports high quality online and blended learning and teaching; the innovative and expanded use of educational technology and eLearning support services.



RUGGERO ROSSANESE

E-LEARNING & MEDIA SUPPORT OFFICERS

ELMOs support academic and professional staff in the use of Flinders Learning Online (FLO) to support learning and teaching in online and blended modes.

Contact: 08 8201 2381

Email: Via ServiceOne request

PROFESSIONAL SERVICES DIRECTORY

RESEARCH DEVELOPMENT & SUPPORT

The Research Development and Support Team provides front of house research support for the College. This includes providing support to Dean Research in activities such as the College research strategy/plan, research initiatives and research committees.



DR REBECCA VAUGHAN
SENIOR RESEARCH SUPPORT OFFICER

rebecca.vaughan@flinders.edu.au
08 8201 2493



MARJA VAN BRED A
RESEARCH SUPPORT ASSISTANT

marja.vanbreda@flinders.edu.au
08 8201 7529

Sturt Gym

The Exercise Sports Science and Exercise Physiology team is responsible for overseeing the operational management of the Sturt Gym and surrounding sporting areas, encompassing space coordination and scheduling of various activities.



SCOTT MANEY

TECHNICAL LEAD - EXERCISE SPORT SCIENCE
AND EXERCISE PHYSIOLOGY

scott.maney@flinders.edu.au
08 7421 3392



BRAD SUTTON

TECHNICAL SUPPORT OFFICER -
EXERCISE SPORTS SCIENCE AND EXERCISE PHYSIOLOGY

brad.sutton@flinders.edu.au
08 7421 9858



OSCAR MOSS

TECHNICAL ASSISTANT

oscar.moss@flinders.edu.au
08 7421 9858