



Research News

Dean of Research

Dear all,

We have had numerous significant media interest stories in the past month concerning research carried out in our College. Dan King featured in a Four Corners programme examining the impact of problematic gaming and whether this can become an addiction, which affects mental health and well-being. Mike Kyrios featured on Channel 7 around Australia in an interview concerning whether compulsive buying-shopping is a clinically definable disorder. It's fantastic to see our research having an impact that is influencing our disciplines as well attracting popular interest.

Although media interest can be a double-edged sword, I would like to encourage our researchers to engage with the media. An excellent way of having a high-level impact is to write a piece for The Conversation. The Conversation allows researchers to write opinion pieces in their area of expertise and reaches a wide audience. We are currently arranging for OCME to give a session on how to pitch/write a piece for The Conversation. Whether or not you wait for this session, I would strongly encourage you to think about what you could write for the Conversation to increase the impact of your research.

Very best,
-Mike



SHAPE

Sport, Health, Activity, Performance and Exercise Research Centre

The SHAPE Research Centre was awarded **\$90,000** from the Roger Rasheed Sports Foundation and Office for Recreation, Sport and Racing for a **scholarship** to investigate the significance of sport in the lives of young people in low SES communities. The PhD Scholarship has been awarded to Emma Milanese, and SHAPE would like to introduce her.

About Emma

I have extensive knowledge and experience working within the field of community sport, conducting a number of research projects working with children, adolescents and older adults from various population groups around South Australia. I am experienced in conducting qualitative health research with marginalised and vulnerable groups such as children and adolescents with Autism Spectrum Disorder, socially isolated older adults and those living in rural areas. As an early career researcher, I have presented at many international conference proceedings in New Zealand, the UK, and the US.

I am also the executive officer of a not-for-profit sport organisation called SportsUnited. SportsUnited seeks to provide people of all ages and abilities the opportunity to participate in sport. This role has enabled me to develop strong leadership, communication and networking skills, and has afforded me the opportunities to work with various government and community stakeholders, in order to advocate for a broad range of public policies and initiatives.

Qualifications

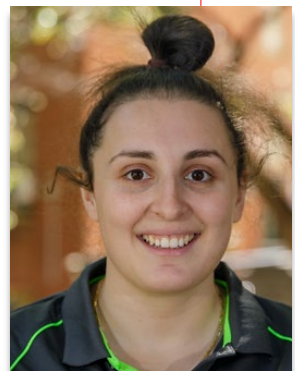
- 2015 Bachelor of Health Science (University of South Australia)
- 2017 Honours Degree (Health Science) (University of South Australia)

Honours, awards, and grants

- 2020 SA Health: Positive Ageing Fellowship Grant. Awarded \$35,000 for the SportsUnited Sporting Memories program
- 2019 City of Unley (Community Grants Program). Awarded \$7,500 for the SportsUnited Sporting Memories program
- South Australian Department of Human Services. Awarded \$5,172 to improve training quality for SportsUnited placement students and volunteers
- 2016 City of Tea Tree Gully (Community Grants Program). Awarded \$10,000 for the SportsUnited Supporting Success program

Fitting into SHAPE

Understanding the core research themes of the SHAPE Research Centre, I will be able to make a strong contribution within themes associated with Physical Activity and Movement behaviour as well as the Sport, society and culture theme. As demonstrated above, my diverse research background will enable me to work within and across these themes. The basis of my research investigates the exploration of improving physical activity as well as the prevention of chronic disease and/or conditions. However, I do have experience exploring sport coaching and pedagogy, as well as transitional pathways in sport, through sport and using sport as a tool to improve retention rates and decrease drop out of high school students. I am looking forward to meeting other PhD students and staff in the college of EPSW.



Órama Institute for Mental Health & Wellbeing



Update on activities

- April 13th 2021. Web's Edge Ltd filmed a 5- and 1-minute video of Órama activities for the American Psychological Society (40,000 potential viewers) and our website – check out this You Tube site - <https://youtu.be/zvtSzESoSo8>
- April 28th 2021. 2-hour workshop at Margaret Tobin Centre featuring shared research projects between SAHLN and Órama

Presentation to the Academic Senate (12 May, 2021)



Key Distinguishing Aspects

- Unique integration of contributions from Psychology, Education and Social Work
- Equal focus on wellbeing and mental illness
- Translational- meaningfully bridge the research-practice gap by partnering with end users (consumers, groups who deliver services) and developing evidence-based approaches and interventions to wellbeing and mental health that are eminently usable across diverse settings, from schools through to psychiatric inpatient services.

Key Activity: Developing Partnerships funding commencing 2021

Organisation/Researcher	Title	Funding
Breakthrough/Tracey Wade	Holly Thredgold PhD scholarship – perinatal mental health	\$90,000
Freemason's Centre for Men's Health and Wellbeing/ Murray Drummond	Masculinity and mental health: shaping the attitudes, behaviours and education of Aboriginal and Torres Strait Islander men through sport	\$194,000
Freemason's Centre for Men's Health and Wellbeing/ Ben Wadham	Veteran suicide: men, health, service	\$76,000
Freemason's Centre for Men's Health and Wellbeing/ Ryan Balzan	Maximising the effectiveness of psychological treatment for young men with psychosis	\$178,000
Flinders University/ SAHRMI and Breakthrough/Fay Fuller Foundation	Indigenous Fellowship in Mental Health	\$200,000
Breakthrough/Tracey Wade	PhD scholarship in eating disorders	\$90,000
Military and Emergency Services Health Australia/ Lydia Woodyatt	Wellbeing in the workforce	\$10,000
Department of Veteran Affairs/Mike Kyrios	Wellbeing in veterans	\$100,000
Concordia College/ Catherine Johnson	Researcher in Residence: Building an evidence-based wellbeing framework across the school community	\$80,000
Breakthrough/Mike Kyrios	OCD	\$25,000
SA Health (SAHLN/Tracey Wade)	Developing, sustaining and evaluating a recovered lived experience workforce in eating disorders	\$10,000
Department of Veteran Affairs/Ben Wadham	Working with veterans in corrective services	\$173,000

Órama Institute

for Mental Health & Wellbeing

Current Strategies

1. Continuing to build the profile of Órama in South Australia and internationally

- American Psychology Association: building partnerships and attracting postgraduate and postdoctoral workers
- National collaborative grant applications across centres of excellence
- Building partnerships with SA Health and headspace
 - Youth mental health, working with self-harming and suicidal youth (Breakthrough)
 - Statewide Eating Disorders service: peer project (SAHLN)
 - Aged care and older persons services (MRFF grant application)
 - Psychosis: The connection between the brain and hallucinations (Flinders University)
 - Wellbeing in mental health workers (Breakthrough)

2. Aligning activity with MRFF profiles

- Co-design
- Health economics and measuring translational outcomes (eg. more Australians accessing clinical trials, new health interventions and technologies embedded in health practice, health professionals adopt best practices faster, community engages with new technologies and treatments)



& Professional Services

- Sam Elliott (2021, May) was an invited member of the SA Government Office for Recreation, Sport and Racing *Game On Youth* expert panel.
- Sam Elliott (2021, April) was an invited speaker for Softball SA to share research insights about developing motivational behaviour in youth sport with players and coaches (140 attendees).
- Sam Elliott (2021, April) was an U16 coach of the SA Football's Club's U16 premiership winning team which was their first SANFL premiership in 25 years.
- Eva Kemps, along with colleagues from the College of Nursing and Health Sciences (Ivanka Prichard, Lucy Lewis and Jasmine Petersen), was commissioned by the publisher of *Diabetes Management Journal (DMJ)*, the flagship journal of Diabetes Australia, to contribute a feature article on exercise apps for the May edition of the journal. Peterson, J., Prichard, I., Lewis, L., & Kemps, E. (2021). Stepping out with apps. *Diabetes Management Journal*, May, 18-20.
- Damien Riggs was an invited expert witness for the *Education Legislation Amendment (Parental Rights) Bill 2000* hearing, Sydney, April 21.
- Damien Riggs was interviewed for the podcast *2 Intended Dads and a Yarn*. [Podcast available.](#)

Social Work Innovation Research Living Space



SWIRLS-CSWIR Collaborate Partnership meeting: Thursday 24 June, 16.30-19.00pm

The SWIRLS (Flinders University, Adelaide, Australia) and CSWIR (University of Sussex, Brighton, England) research centres are delighted to be launching their collaborative research partnership with a 'Meet and Greet' event. Faculty colleagues and doctoral students are warmly invited to participate in this lively and fast-paced exchange of research interests, ideas and expertise that will mark the beginning of this exciting initiative on 24 June. The event will provide an opportunity for attendees to: hear from faculty colleagues and doctoral students about their current research; meet in small groups to share your own research activities and interests; begin to establish international research relationships and collaborations.

Grant Success

SWIRLS have been successful in two ARC grants: an ARC Discovery Project, and an ARC Linkage grant. The ARC Discovery Project is led by Sarah Wendt, Kris Natalier and Kate Seymour, and titled *Strengthening Australia's Domestic and Family Violence Workforce*. The ARC Linkage grant is led by Kris Natalier, Sarah Wendt, Michelle Jones, Carmella Bastian, and Kate Seymour in partnership with the Department of Child Protection, Anglicare and Life Without Barriers. It is titled *A home-centred approach to support children and young people in state care*.

PhD Graduates

Shawna Marks graduated with her thesis *The sexual politics of Australian Football: Social constructions of masculinity, sex, and sexual violence*. Principal supervisor: Professor Murray Drummond. Associate supervisor: Professor Sarah Wendt.



Kieu Nga Nguyen graduated with her thesis *Tasting Australia: Vietnamese student parents' experience of living in limbo - A Janus head analysis*. Principal supervisor: Dr Helen McLaren. Associate supervisor: Associate Professor Lorna Hallahan. Interim associate: Dr Michelle Jones.



Book Chapters

- Bartholomaeus, C. & Riggs, D.W. (2021). Transgender and non-binary students, staff, and families in schools. In K-A. Allen, A. Reupert & L. Oakes (Eds.), *Building better schools with evidence-based policy* (pp. 183-191). New York: Routledge.
- King, D. L., Gainsbury, S. M., & Delfabbro, P. H. (2021). Online gambling and gambling-gaming convergence. In J. E. Grant & M. N. Potenza (Eds.), *Pathological Gambling* (pp. 77-97). Washington, DC: American Psychiatric Publishing.

Refereed Journal Articles

- Billieux, J. Stein, D. J., Castro-Calvo, J., Higuchi, S., King, D. L. (2021). Rationale for and usefulness of the inclusion of gaming disorder in the ICD-11. *World Psychiatry*. Doi: 10.1002/wps.20848.
- Castro-Calvo, J., King, D. L., Stein, D., Brand, M., Carmi, L., ... Billieux, J. (2021). Expert appraisal of criteria for assessing gaming disorder: An international Delphi study. *Addiction*. Doi: 10.1111/add.15411.
- Ciricugno, A., Bartlett, M. L., Gwinn, O. S., Carragher, D. J., & Nicholls, M. E. R. (2021). The effect of cognitive load on horizontal and vertical spatial asymmetries. *Laterality*. Doi: 10.1080/1357650X.2021.1920972
- Delfabbro, P. H. & King, D. L. (2021). The value of voluntary vs. mandatory limit-setting systems: A review of the evidence. *International Gambling Studies*. Doi: 10.1080/14459795.2020.1853196.
- Delfabbro, P. H. & King, D. L. (2021). Is there a continuum of behavioural dependence in problem gambling? Evidence from 15 years of Australian prevalence research. *International Journal of Mental Health and Addiction*. Doi: 10.1007/s11469-021-00509-y.
- Drummond, M., Elliott, S., Drummond, C., Prichard, I., Lewis, L., & Bevan, N. (2021). Sport and the LGBTIQ+ community: A South Australian study. *Frontiers in Psychology*. Doi: 10.3389/fpsyg.2021.671586.
- Fien, S., Lawes, J. C., de Terte, I., Simon, P., Joseph, N., Daw, S., Drummond, M., Best, T., & Stanton, R. (2021). Forgotten first responders: Australian surf lifesavers and lifeguards. *EMA - Emergency Medicine Australasia*. Doi: 10.1111/1742-6723.13754
- Galanis, C., Delfabbro, P. H., & King, D. L. (2021). Stigma-related arguments against gaming disorder: A call for research. *Addiction*. DOI: 10.1111/ADD.15561.
- Giardina, A., Di Blasi, M., Schimmenti, A., King, D. L., Starcevic, V., & Billieux, J. (2021). Online gaming and prolonged self-isolation: Evidence from Italian gamers before and during the COVID-19 outbreak. *Clinical Neuropsychiatry*, 18, 65-74.
- James, O., Delfabbro, P. H., & King, D. L. (2021). A comparison of psychological and work outcomes in open-plan and cellular office designs: A systematic review. *SAGE Open*. Doi: 10.1177/2158244020988869
- Kristensen, J. H., Pallesen, S., King, D. L. Hysing, M., & Erevik, E. K. (2021). Problematic gaming and sleep: A systematic review and meta-analysis. *Frontiers in Psychology*. Doi: 10.3389/fpsyg.2021.675237.
- Lim, A., Young, R. L., & Brewer, N. (2021). Autistic adults may be erroneously perceived as deceptive and lacking credibility. *Journal of Autism and Developmental Disorders*. Doi: 10.1007/s10803-021-04963-4
- Logos, K., Brewer, N., & Young, R. L. (2021). Countering biased judgments of individuals who display autism-characteristic behavior in forensic settings. *Human Communication Research*. Doi: 10.1093/hcr/hqab002
- Jin, Y., Krieg, S., Hamilton, A., Su, J. (2021). To teach creativity (or not) in early childhood arts curriculum: A case study in Chinese Beijing kindergartens. *International Journal of Early Years Education*, 1-16. Doi: 10.1080/09669760.2021.1917341
- Park, J., Wilkinson-Meyers, L., King, D. L., & Rodda, S. (2021). Person-centred interventions for problem gaming: a stepped care approach. *BMC Public Health*, 21, 872.
- Parkin, N. (2020). Turning differently toward learning design, and finding the real gift of slow. *Journal of Perspectives in Applied Academic Practice*, 8(1), 121-126. Doi: 10.14297/jpaap.v8i1.352
- Smith, J. A., Merlino, A., Christie, B., Adams, M., Bonson, J., Osborne, R. H., Drummond, M., Judd, B., Aanundsen, D., Fleay, J., & Gupta, H. (2021). Using social media in health literacy research: A promising example involving Facebook with young Aboriginal and Torres Strait Islander males from the Top End of the Northern Territory. *Health Promotion Journal of Australia*, 32(S1), 186-191. Doi: 10.1002/hpja.421
- Starcevic, V., King, D.L., Delfabbro, P., Schimmenti, A., Castro-Calvo, J., Giardina, A., & Billieux, J. (2020). "Diagnostic inflation" will not resolve taxonomical problems in the study of addictive online behaviours (Commentary on Montag et al., 2020). *Journal of Behavioral Addictions*, 9(4), 915-919.
- Velardo, S., & Elliott, S. (2021). The Emotional Wellbeing of Doctoral Students Conducting Qualitative Research with Vulnerable Populations. *The Qualitative Report*, 26(5), 1522-1545. Doi: 10.46743/2160-3715/2021.4421
- Wendt, S., Bastian, C., & Jones, M. (2021). Building collaboration with child protection and domestic and family violence sectors: Trialling a living lab approach. *The British Journal of Social Work*, 51(2), 692-711. Doi: 10.1093/bjsw/bcaa206.



PRESENTATIONS

- Bartlett, M. L., Boskemper, M. M., & McCarley, J. S. (2021, May). *Benchmarking operators' automation-aided decision-making strategies in a binary signal detection task*. Poster presented at the 2021 International Symposium on Aviation Psychology.
- Dr Andrew Bills (2021, March) was one of four invited keynotes for the recently held *Keeping Kids Connected to Learning and Schooling* Summit. Two important reports into the use of exclusionary practices by South Australian government schools were released last year, namely: Graham final report: *Inquiry into suspension, exclusion and expulsion processes in South Australian Government schools* and SA Commissioner for Children and Young People's report, *The blame game: Perspectives from children and young people on the impact of school exclusions*. The reports offer the South Australian community a unique opportunity for the future. They identify and map issues that are negatively affecting some of our children and therefore highlight the barriers to successful inclusion of all our students. The reports made recommendations that could fundamentally change the face and shape of South Australian schools. The conference provided an opportunity to learn about the issues and recommendations and for audience members (public school leaders and NGOs) to offer constructive, impactful input into the reports' recommendations. Keynotes included the CCYP Ms Helen Connelly, Educational Leadership Academic, Dr Andrew Bills, Associate Professor Anna Sullivan and SAPPA President, Ms Angela Falkenberg.
- King, D. L. (2021, April). Internet gaming disorder: Assessment, diagnosis, neuro-cognitive models and treatment. Invited speaker for *Challenges and Frontiers in Internet Gaming Disorder and Problematic Internet Use* seminar series, Fiona Stanley Hospital Groups, Perth, WA.
- McGowan, S., Bartlett, M. L., & McCarley, J. S. (2021, May). *The effect of automation response bias on operators' decision-making strategies in aided visual search*. Poster presented at the 2021 International Symposium on Aviation Psychology.
- Nixon, R.D.V. (2021, May). *Improving and disseminating psychological therapy for PTSD/CPTSD: An update from the Flinders University PTSD Clinic*. Presentation to clinicians at the Jamie Larcombe Centre, Adelaide.
- Nixon, R.D.V. (May, 2021). *Cognitive Processing Therapy: Research (and Clinical) Update*. National Professional Development Webinar hosted by the Centre for Clinical Psychology, Carlton, Victoria.
- Pill, S. (2021, May). Presentation titled *PE teachers as learning designers: Mosston's spectrum of teaching styles* at Charged Up Education.
- Pill, S. (2021, May) Presentation *Yungaporta's boomerang matrix of cultural interface knowledge and sport teaching in PE* at Empowered Youth Development Initiatives, Indigenous Pedagogy Virtual Academy II.
- Riggs, D. W. (2021, May). Working with trans and non-binary people: An overview. *Grand Round, Prince of Wales Hospital, Sydney*.
- Wadham, B. (2021, April). Invited presentation on military sexual trauma to the USAF.
- Wilksch, S. (2021, May). Training presentation titled *Media smart: An effective approach to reducing eating disorder risk in school settings* for teachers at Concordia College.

19 May 2021. ABC North and West SA. Interview with Dr Monica Cations re young onset dementia.

19 May 2021. The Tribune. *Daily interaction with peers root of aggression among students: Study*, featuring research led by Dr Grace Skrzypiec on the effect of COVID-19 on levels of bullying and cyber-bullying, pointing out that the root of harmful aggression among students lies in their daily interaction with peers with less aggression experienced during lock-down.

16 May 2021. Prevention. *The truth about blue light*, featuring Professor Michael Gradisar saying 'research shows that TV screens don't reduce melatonin levels or interfere with sleep likely due to the light being fairly dim and not close to the face.'

15 May 2021. Channel 7 (nationwide); Three, Wellington; article in Moms on 20th May. News item on the recent CBSD research study led by Professor Mike Kyrios. The study has declared that excessive shopping is a medical condition.

14 May 2021. Mirage News; The National Tribune. *Trigger warnings may prolong bad memories*, featuring Associate Professor Melanie Takarangi and Victoria Bridgland (PhD Candidate Psychology) on research findings suggesting that warning messages may prolong the negative characteristics associated with bad memories over time, rather than prepare people to recall a negative experience.

14 May 2021. Study Finds. *Addiction experts set clinical guidelines for 'compulsive buying-shopping disorder'*, featuring Professor Mike Kyrios re past absence of commonly agreed diagnostic criteria hampered the perceived seriousness of the problem and that the recent study producing a set of guidelines to help people manage spending and mental wellbeing.

14 May 2021. The Educator Australia. *Feeling snowed under? Shared leadership can turn the tables*, featuring Anne Bayetto on a study to document the impact principals can have on improving students' reading.

13 May 2021. Eden Imlay Magnet; South Coast Register. Editorial. *NAPLAN does little for students' wellbeing*, featuring Associate Professor David Curtis comments on school factors only 20% of the variation between students with non-school factors accounting for the remaining 80% and therefore schools with low average achievement should not be blamed for it and schools with high average achievement should not take the credit for it.

12 May 2021. ABC Online. *Teachers are warning parents to temper their expectations about NAPLAN results*, featuring Associate Professor David Curtis' comments on COVID-19 having had an impact on students' performance.

11 May 2021. Adelaide Advertiser. *Eating disorders linked to sex crimes by Dr Simon Wilksch* saying that research indicates 20-40 percent of eating disorder patients have experienced sexual assault.

11 May 2021. ABC Goulburn Murray; ABC Ballarat. Interview with Associate Professor David Curtis on the need to more accurately qualify NAPLAN testing results.

10 May 2021. Education HQ; Adelaide Advertiser; Bega District News; News Weekly (Merimbula); Education Today. *NAPLAN is back: Experts dissect its worth*, featuring Associate Professor David Curtis saying that NAPLAN does not assess individual children with high precision as only 20% of school factors account for student achievement with 80% attributable to non-school factors.

10 May 2021. Adelaide Advertiser, Letter to the Editor. *School days* by Emeritus Professor John Halsey re better utilisation of existing local school facilities that could include extending formal school open and operating times of learning.

8 May 2021. MSN Australia; France Times of News; Daily Mail Australia. *Excessive buying and shopping can constitute a disorder, experts*, featuring Professor Mike Kyrios and Dr Dan Fassnacht re the compulsive buying-shopping disorder (CBSD) and that the Delphi method used to reach consensus from panel of experts on what they say is a very complex disorder.

7 May 2021. Scimex! *Help for serious shopaholics*, featuring Professor Mike Kyrios leading a collaborative project which built a framework to diagnose Compulsive Buying-Shopping Disorder to help people manage their spending behaviour and mental wellbeing. The article also featured Dr Kathina Ali who was a co-investigator on the project.

6 May 2021. 5AA, Adelaide. Interview featuring Dr Dan Fassnacht on the issue of shopacoholism.

4 May 2021. EurekAlert! *Help for serious shopaholics*, featuring Professor Mike Kyrios leading a collaborative project which built a framework to diagnose Compulsive Buying-Shopping Disorder to help people manage their spending behaviour and mental wellbeing. The article also featured Dr Kathina Ali who was a co-investigator on the project.

3 May 2021. WA Today; The Coalface; The Age, Melbourne. *Curriculum review: Schools already shedding 'white-washed' version of history*, featuring comments by Professor Debra Bateman on the proposed changes to Australia's curriculum reflecting an increasing sophisticated understanding of Aboriginal reconciliation and of Australia's place in the world.

3 May 2021. ABC Goldfields, WA; ABC Radio Canberra; Radio Australia; ABC Eyre Peninsula and West Coast, Port Lincoln; ABC South East NSW; and associated radio. Interview with Associate Professor Daniel King re social media information strongly predicts people's behaviours within the context of gaming.

3 May 2021. MSN Australia. *Play the game to see how video games are designed to get you hooked*, featuring Associate Professor Daniel King saying "many of the games are using machine learning, they're tracking what players are doing using people's information and within their social network to make very strong predictions about how people will behave."

3 May 2021. ABC Online (podcast). *When the game plays you*, featuring Associate Professor Daniel King.

3 May 2021. ABC Radio Canberra (nationwide coverage). Interview with Associate Professor Dan King on the ABC Four Corner's investigation into the Australian videogame industry which looked into monetisation targeting certain demographics commenting that microtransactions make people change their psychological value of money.

3 May 2021. ABC Four Corners. *The Business of Video Gaming*, about gaming being a global business worth about \$175bn, and featured Associate Professor Daniel King who commented on a review of 53 global studies which found 2% of all players had gaming disorder.

27 April 2021. ABC North and West SA, Port Pirie. Interview with Emeritus Professor John Halsey re the gender gap in education results.

22 April 2021. Retail Pharmacy. *A personal wellbeing quest*, featuring Professor Mike Kyrios re practical steps people can take to improve their wellbeing and prevent mental health problems.

20 April 2021. ABC North and West SA, Port Pirie. Interview with Associate Professor Ben Wadham re recommendations from the royal commission outcome on veteran suicide.

20 April 2021. Science Codex; Newshub; Australian Nursing & Midwifery Journal; Scimex; Mirage News; The National Tribune. *Researchers drill down to the core of wellbeing worldwide*, featuring research by SAHMRI and Flinders in the best way to build personal wellbeing with no one-size fits all solution.

20 April 2021. ScienceAlert; MSN Australia. *Results from world's largest wellbeing study are in: Here's what we know*, featuring Professor Mike Kyrios comments on psychological interventions via online platforms are cost-effective addition to current referral pathways and treatment methods, and can prevent future complications.

19 April 2021. Prevention. *New research reveals the best way to build personal wellbeing*, featuring Professor Mike Kyrios re regular practice of good health habits can improve wellbeing and overall mental health.

Budget Estimator Tools

All researchers have access to the online and downloadable **budget estimator tools** for tied/competitive research and commissioned research.

The two estimator tools are in Excel format and aim to assist researchers prepare budgets for grant applications, including Category 1 grants, or for commissioned/contract research and tenders.

Benefits of using these budget estimator tools include, for example:

- the direct salary costs
- on-cost rates which can be easily adjusted
- budget totals are summarised and available as both financial year or calendar year totals.

You are able to **download** the tool via the Research Funding Application Process page:

<https://staff.flinders.edu.au/research/funding/application-process>

We recommend that before you begin using the tool you first read the **READ ME** tab (as this gives some essential information).

It is recommended that as part of every application you add a 25% **infrastructure levy**, unless the funder specifically states this not be included. For a reduction of the levy, you must first seek approval from the Dean of Research. On the budget estimator tool's **Summary Budget** page, the 25% levy is an optional calculation, with the % being able to be altered, which then is added to the final Total.

If you require **assistance** in preparing a budget and/or using this tool please contact **CEPSW Research Support** on cepsw.research@flinders.edu.au, and we will be happy to help you.



Gaming issues fall under national spotlight

Associate Professor **Daniel King** featured in a major *Four Corners* report for ABC-TV on the vexed issue of video gaming addiction, highlighting his recent research and noted expertise in this area of global public concern.

The story – ***Are you being played? What you need to know about the business of video games*** – cast an investigative light across the video games industry worth an estimated \$US175 billion, which is more than Hollywood and the music industry combined.

From smart phones to consoles and desktops, gamers immerse themselves in imaginary worlds which can be far more appealing than real life – but ongoing research is showing many gamers struggle to switch off and can find themselves hooked on their virtual universe. The discussion about gaming and whether it can cause harm is often reduced to a simplistic debate, but this investigation revealed the manipulative techniques used in many games.

Four Corners asked gamers to share their experiences. Thousands responded and some chose to tell their stories publicly, telling stories of addiction, anxiety and surprise at the vast amount of money they have spent on games.

Associate Professor King's [research published in March](#) identified that problematic gaming is a significant health issue worldwide, especially amongst male adolescents. He estimates its global prevalence to be about 2% of all gamers – possibly tens of millions of people worldwide.



Stock photo: Getty Images

A Flinders University media release on Associate Professor King's work to identify practical families who experience gaming-related problems was noted by ABC journalist Lucy Carter, who realised that his expertise in interventions for individuals and plugged directly into her investigative report. The Flinders media team helped organise a *Four Corners* crew from Sydney to interview Associate Professor King on campus, with his research becoming a foundation for the 45-minute report.

The program that went to air and also featured interviews with high-profile gaming industry figures who have worked on some of the world's biggest video games. They discussed the ethical minefield that game design can create through techniques driven by aggressive business models. "It's not just a question of keeping players in the game for longer, it's also about enticing them to part with real world cash for a virtual pay off," said one video game industry insider.

The *Four Corners* report – broadcast on Monday 3 May, and replayed on 4 May at 1.00pm and 5 May at 11.20pm – can also be seen on ABC NEWS channel on ABC iview and at abc.net.au/4corners.



Higher Degree by Research

Events

The committee will be running a **monthly morning tea**. The first one was held Wednesday 19th May at 11am in the Cove. Think of this as a social event where you can meet up with fellow HDR students in your College to discuss anything related to HDR life. It is a good opportunity to meet like-minded people and to get know others in the College. It is also a great place to ask questions about HDR policies, milestones, or anything else your supervisor might not know the answer to. Coffee and snacks will be provided. See: [Map of the Cove](#).

Teams

All EPSW HDR students were recently added to a **Teams group** run by the committee. This will be a space where you can discuss and ask questions about anything related to HDR matters. Also, you can find important forms and files that you may need in the Files tab.

Twitter

There is now a twitter for EPSW HDR students which will feature updates about events, seminars, and achievements. Please follow the twitter at: <https://twitter.com/EPSPWHDR>

HDR Student Survey

The survey is still open and would like to hear from continuing and new HDR students about their experiences and suggestions for completing their HDR. The survey only takes about 10 minutes to complete. All responses are anonymous and only select members of the student committee have access to your responses. You can find the survey at the following link: https://qualtrics.flinders.edu.au/jfe/form/SV_a2By8zbUpyNjH89

HDR Student Committee Recruitment

This year we are hoping to recruit **new members** to the committee with a focus on **International students**. Having equal representation across the College is important because it allows us to improve and support all HDR student's experiences. This is a low time commitment role that would require around 2 hours a month. Please get in contact if you are interested in joining.

CEPSW HDR Contacts

A reminder that if you have any concerns or questions that you might not feel comfortable asking your supervisor, please get in touch with any of the committee members and we will help you as best we can or point you in the right direction.

Student Committee: epsw-hdr-sc@FLINDERS.onmicrosoft.com

Psychology: ryan.calabro@flinders.edu.au

Social Work: jin.chen@flinders.edu.au

Education: catherine.litchfield@flinders.edu.au

Link to **CEPSW HDR FLO** page: <https://flo.flinders.edu.au/course/view.php?id=56481>

HDR Completions

Matthew Stevens completed a Doctor of Philosophy for the thesis entitled *Epidemiological evidence and potential interventions for problematic gaming: A behavioural addiction perspective*. Principal Supervisor: Associate Professor Daniel King. Associate Supervisor: Professor Paul Delfabbro. Matthew received a **Dean's Commendation for Doctoral Thesis Excellence**.

Esther Yu completed a Doctor of Education for the thesis entitled *Secondary school choice*. Principal Supervisor: Dr Andrew Bills. Associate Supervisor: Associate Professor Ben Wadham.



Researcher Development: What's coming up

Date	Topic	Description
Tuesday 25 May	Keeping up to date: Tracking current research	This interactive workshop will guide participants through setting up alerts to keep up to date with new information on key research topics, people of interest, or when a new journal Table of Contents is available.
Wednesday 26 May	ARC DECRA & Future Fellowships	This session will prepare you for an ARC fellowship application.
Friday 28 May	NHMRC and Health Funding Schemes	This will provide an overview of NHMRC schemes, MRFF funding, other health funding sources, the timelines, and support that is available.
Tuesday 1 June	ARC Discovery Projects	This session will give an overview of the scheme.
Thursday 3 June	ARC Linkage Projects: Considerations before applying	This session will given an overview of the scheme.
Wednesday 16 June	Promoting publications and building a research brand	This workshop will investigate: a check list of considerations; how to increase the impact of research outputs using online tools; engaging with the Flinders media team; recording engagement and impact - storing, collecting and collating.
Wednesday 18 July	Social Media for Researchers	This gives an overview of different social media platforms and discuss how to harness social media to promote your research.



Grants, Funding and Award Opportunities

[ResearchLink](#) for further searches

- [ARC National Competitive Grants Program](#): For a list of 2021 indicative key dates.
- [ARC Discovery Projects 2022 \(DP22\)](#) : Rejoinders: 8-22 June 2021.
- [ARC Linkage 2021](#): Applications for [Linkage Projects](#) for funding applied for in 2021 (LP21) are now open in the [Research Management System](#) (RMS) and will close at 5.00pm (AEDT) on Thursday, 16 December 2021.
- [Australia-Germany academic exchange program](#). 2021 Application round of the Australia-Germany Joint Research Cooperation Scheme. Submission deadline: 15 June 2021.
- [DFAT Council for Australian-Arab Relations \(CAAR\) 2021-22 Grant Round](#). Internal closing date 19 May 2021.

Notices, Professional Development and Events

- [iEnrol Research](#). Upcoming web-conferences for researchers.
- [Intellectual Property for Researchers](#). This presentation will cover the basics of intellectual property, including the different types of intellectual property as well as the most appropriate method of protection. Date: 16 September 2021.
- [Research Professional](#). Webinar quarterly: includes information on impacts of Covid, 2020 highlights and a 2021 road map.
- [Research Integrity](#). Presented by Hendryk Flaegel, Manager, Research Ethics and Compliance, RDS, this session covers requirements of the Australian Code for the Responsible Conduct of Research (2018) and other relevant guidelines and legislation. Dates: 5 August 2021; 2 December 2021.

Visiting Scholar

Professor Rochelle Eime, Director of the Sport and Recreation Spatial Program (Victoria University) was hosted by **Dr Sam Elliott** in May on the social and health impact of COVID-19 on youth and adult sport participation, before and during the pandemic. During the two day visit, cross-collaboration was discussed including development of two manuscripts and ARC Linkage opportunities. Professor Eime was a guest speaker for the HDR youth sport group supervision.

