



# Research News

## Dean of Research



Dear all,

For those of you who watched the VC's update a few weeks ago, you will have noticed that our College is projected to have earned \$4.4M in research income during 2021. In 2017 we earned just \$1.6M and were the lowest of all Colleges at Flinders. Obviously, this is not a position we wanted to be in, and the College Research Committee set a target to double our research income by 2021. It's very pleasing to see that we have exceeded this target. It's also pleasing to see where this increase in research income has come from. The increase hasn't been on the back of one or two individuals winning a few very large grants. Instead, the majority academics carrying out research have earned some research income. A profile like this puts us in a secure position to increase our income further and chase some really large grants.

The other big news is the establishment of a new College Research Initiative. The Generations Initiative is led by Tim Windsor and Deputy Directors Monica Cations and Stephanie Wong. The College already has a strong profile in ageing research and this Initiative will further strengthen this profile and provide linkages with academics across the University and with government and industry partners. The Generations Initiative joins the already very successful Blackbird and Open Door Initiatives.

Very best,  
-Mike



**Professor Reg Nixon and Associate Professor Melanie Takarangi**, together with colleagues Carolyn Semmler, Sau Yee Yiu, Desmond Yau, Gary Hanley, Kym Meaney, Rebecca Heyer, Sam Darvishi, and Siobhan Banks, were awarded the Leoni Warne Memorial Award in recognition of an outstanding presentation on *Validating unobstructive measures of psychological states to predict negative responses to distressing imagery for resilient human performance* at the Defence Human Sciences Symposium, 1 December 2021.

## Publications



### Book Chapters

Peel, E., Ellis, S.J., & Riggs, D.W. (2021). Lesbian, gay, bisexual and transgender people: Prejudice, stereotyping, discrimination and social change. In C. Tileaga, M. Augoustinos & K. Durrheim (Eds.), *International Handbook of discrimination, prejudice and stereotyping* (pp. 104-117). London: Routledge.

### Refereed Journal Articles

Cruickshank, V., Pill, S., & Mainsbridge, C. (2022). The curriculum took a back seat to huff and puff: Teaching high school health and physical education during Covid-19. *European Physical Education Review*, 1-15. Doi: 10.1177/1356336X221086366

Cruickshank, V., Pill, S., Williams, J., Nash, R., Mainsbridge, C. P. MacDonald, A., & Elmer, S. (2022). Exploring the 'everyday philosophies' of generalist primary school teacher delivery of health literacy education. *Curriculum Studies in Health and Physical Education*, DOI: 10.1080/25742981.2022.2059384

Drummond, M., Wadham, B., Prichard, I., Elliott, S., Drummond, C., & Crossman, S. (2022). Level playing field: Young males, masculinity and mental wellbeing through sport, *BMC Public Health* . Doi: 10.1186/s12889-022-13200-1

Fouladirad, S., Chen, L., Percival, C., Khangura, J., Chinchani, A., Moscovitch, A., Arreaza, L., Wun, C., Sanford, N., Roes, M., Balzan, R., Moritz, S., Menon, M., & Woodward, T. S. (2022). Functional brain networks underlying probabilistic reasoning and delusions in schizophrenia. *Psychiatry Research: Neuroimaging*. Doi: 10.1016/j.psychres.2022.111472

Gould J., Di Fiore, C., Williamson, P., Roberts, R. M., Shute, R. H., Collins, C. T., & Makrides, M. (2022). Diathesis-stress or differential susceptibility? Comparing the theories when determining the outcomes for children born preterm. *Acta Psychologica*, 224, 103533. Doi: 10.1016/j.actpsy.2022.103533

Gynell, I., Kemps, E., & Prichard, I. (2022). The effectiveness of implicit interventions in food menus to promote healthier eating behaviours: A systematic review. *Appetite*, 173, 105997.

Hechler, S., Wenzel, M., Woodyatt, L., & de Vel-Palumbo, M. (2022). What does being hard on yourself communicate to others? The role of symbolic implications of self-punishment in attributions of remorse. *Journal of Experimental Social Psychology*, 101, 104305. Advance online publication. Doi: 10.1016/j.jesp.2022.104305

Moritz, S., Menon, M., Balzan, R. P., & Woodward, T. S. (2022). Metacognitive Training for Psychosis (MCT): Past present and future. *European Archives of Psychiatry and Clinical Neuroscience*. DOI: 10.1007/s00406-022-01394-9

Thai, M., Wenzel, M., & Okimoto, T. G. (2021). Turning tables: Offenders feel like "victims" when victims withhold forgiveness. *Personality and Social Psychology Bulletin*. Advance online publication. Doi: 10.1177/01461672211062401

### Reports

Bills, A., & Howard, N. (2022). *It's time to reflect: What is the cost of the South Australian Education Department's pursuit of becoming a "World Class" Education System by 2028?* CEPSW Industry Report No 2. Flinders University. Finsbury Publishing, Adelaide.

# The Generations Research Initiative



## Improving health and well-being through the study of lifespan development and ageing

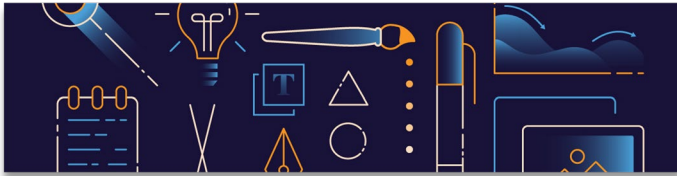
The world's population is rapidly ageing. In 2019 there were 703 million people in the world aged 65 or over. By 2050, this number is projected to more than double to 1.5 billion. This unprecedented demographic change presents a range of complex challenges and opportunities for governments, policy makers and communities, highlighting the importance of understanding what it means to age well, and the resources needed to get there.

Meeting the challenges for individuals and societies posed by population ageing requires a strong evidence base supported by high quality research. Contributing to this endeavour is the goal of the recently approved CEPSW Generations Initiative.

Generations is led by Director Associate Professor Tim Windsor and Deputy Directors Dr Monica Cations and Dr Stephanie Wong. The broader membership of the initiative includes several CEPSW staff (Dr Jane Jarvis, Associate Professor Nathan Weber, Dr Ryan Balzan, Dr Julia Turner Scott, Emeritus Professor Mary Luszcz, Dr Leah Couzner, Dr Dan Fassnacht, and Dr Kathina Ali) and students (Daniele Antoniou, Alexis Howard, Amy Harvey, Clare Beard, and Claudia Ciccarello) as well as Flinders-based researchers external to CEPSW and national and international collaborators.

The mission of the Generations Initiative is:

- To improve the health and wellbeing of older people through research that increases the understanding of individual and societal ageing
- To enhance the social capital and resilience of communities by fostering intergenerational connections
- To contribute to the development of better services for older adults receiving care in the community, and in residential care
- To engage with relevant academic, government and non-government organisations to inform policy and program development and service delivery.
- To provide a high-quality research and training environment to attract and build capacity of students, post-doctoral and early career researchers in gerontology
- To maintain and enhance collaborations with national and international scholars



# Presentations

Bromley, A. (PhD Candidate) (2022, March) presented virtually at the ISPCAN congress held at Quebec City, Canada. The international congress focused on Caring Communities to Improve the Well-being of Children and Families. Amy's presentation was entitled *The spirit of evidence-based practice: Building expertise for child protection practitioners*.

Elliott, S. (2022, April). Gave an invited presentation at the SEDA College (SA) on *The power of sport*. Adelaide Bowling Club, 40 delegates.

Pill, S. (2022, March). Presented *Skill acquisition in secondary school physical education* at the Movement Skill Acquisition, Ireland. Webinar.

Onody, A. P., Wenzel, M., & Woodyatt, L. (2022, February). *Dynamics of perspective-taking and perceived perspective-taking and the facilitation of value consensus following interpersonal wrongdoing*. Presented at the Society for Personality and Social Psychology 2022 Annual Convention Preconference: Conflict and Conflict Resolution Data Blitz, Virtual – San Francisco, California.

Pill, S. (2022, April). Presented *Game based teaching approaches in Australia*. Network Teaching Games Conference, Fontys Applied University, Netherlands. Webinar.

Thomas, E.F. (2022, March). *Where there is a (collective) will there is an (effective) way: How individual differences, life experiences and group processes promote action to address humanitarian disadvantage*. British Psychological Society Outreach Event 'Putting Social Psychology on the Map: Allyship and Action'.



## COMMUNITY & Professional Services

- Lorna Hallahan has been appointed as a Critical Friend in the Australian Council of Learned Academes Project: *Enhancing Disability Confidence of Professionals* funded by the [Department of Social Services](#).
- Shane Pill spoke about Game Based coaching at the Morphett Vale Football Club Coach Development Forum.
- Damien Riggs made submissions to both the South Australian Independent Inquiry into Foster and Kinship Care, and the National Stillbirth Clinical Care Standards Consultation.
- Damien Riggs provided consultation for the National Mental Health Commission's development of core competencies for the mental health workforce when working with LGBTIQ+ people.
- Damien Riggs facilitated a webinar for the Mental Health Professionals Network focused on Suicide Prevention for LGBTIQ+ Communities, held on March 22<sup>nd</sup>.
- Ben Wadham has been invited to the Collaborative Research Network on Transforming Military Cultures (RN-TMC). The Network is funded through a 3-year Mobilizing Insights in Defence and Security (MINDS) Collaborative Network Grant from the Canadian Department of National Defence. The funding results have been [announced](#). The Network brings together the voices of critical scholars, practitioners, and those with lived experience, both in Canada and internationally, to address the official DND "challenge" areas of culture change, prevention of sexual misconduct, and prevention of systemic racism. With our network activities we will provide an integrated and innovative framework to understand and tackle systemic root causes of the problematic military culture instead of the band-aid and mechanistic solutions to culture change that have been previously put forth.



# Social Work Innovation Research Living Space



## Planning Day, 25 March 2022

SWIRLS held its annual Planning Day on Friday 25th March. It was a full day of information gathering, brainstorming and goal setting. We reflected on where we have been and looked to the future, visualising what we want to accomplish in the next 12 months. Our Dean Research, Mike Nicholls, provided an insight into SWIRLS positioning within the College and we heard from our university business partners about how they can support SWIRLS to achieve success. We were also privileged to experience the *Sovereign sisters: Domestic work* exhibition at FUMA, hosted by Fiona Salmon, Natalie Harkin and Simone Tur. We were able to formulate concrete action steps to implement for SWIRLS continued success and it was wonderful to pause and take time out from busy schedules to connect as a team.



## Grant Success

A ground-breaking national framework for protecting young people with disabilities from abuse is the aim of new research that has been awarded [ARC funding](#), led by disability researcher and SWIRLS Member, Professor Sally Robinson. The three-year grant (\$466,852) brings together Flinders investigators with government, disability industry and community advocacy partners to develop a framework for preventing everyday harm and abuse while also promoting safety and wellbeing for young people with disability through using support services. With its national scope, the project will support recommendations from the Disability Royal Commission and the incoming Australian Disability Strategy 2022-2032.

## Professional and Community Services

At the AASW Board of Directors' meeting, the Board approved the three year appointment of Sarah Wendt to the Editorial Board of the Australian Social Work.

Carmela Bastian has taken up membership on the Flinders University Human Research Ethics Committee as a full member under 'Expertise in Research'. Her contribution will be of great value to human research ethics at Flinders.

## SWIRLS and CSWIR International Public Lecture 15 March 2022 (World Social Work Day)



On World Social Work Day, SWIRLS and the University of Sussex's Centre for Social Work Innovation and Research (CSWIR) hosted an [online event](#) to discuss what the registration of Social Work means for values, principles and identity. The event was attended by 67 participants.

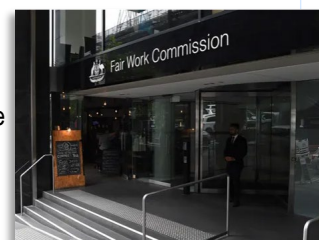
## AASW Event Presentation

Carmela Bastian spoke at the Australian Association of Social Workers (AASW) online symposium 'Are We Caring for Everyone? A Child Protection Symposium' on Thursday 10th March. She presented to 500 online attendees on the topic *Ongoing workforce challenges in child protection and building resilience for frontline practitioners*. The AASW regularly conducts pivotal industry events, spanning the many fields of social work practice, bringing together key industry, health and Government leaders to drive progress and positive outcomes. This Symposium explored the current child protection practice trends and research in the area, challenges faced by child protection social workers and how to better support frontline workers.

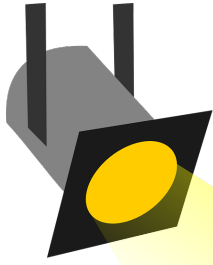
## In the Media

SWIRLS member, Gerry Redmond (CBGL), wrote for [The Conversation](#) about why Australia must tackle child poverty to improve educational outcomes.

The Victorian government has called for at least 10 days of paid family violence leave to be offered to all workers, telling the Fair Work Commission a program for the state's public servants saw about 64 people access the leave in the past



year alone. The FWC is reviewing whether employees should be entitled to paid family violence leave under modern awards. SWIRLS Member, Kate Seymour was part of a team that completed an analysis of Australia's workplace agreement database for the FWC and provided insight into the findings in [Guardian Australia](#).



# Dr Georgia Rowley



## **Spotlight Series: ECR and Mid-Career Researchers**

*With the aim of raising awareness of the amazing early- and mid-career researchers within our College, we will be profiling and sharing the successes of a different ECR/MCR each month. It is my pleasure to introduce to you Dr Georgia Rowley!!*

Dr Ryan Balzan, ECR College Representative

### **When did you come to Flinders and what is your current role within the College?**

I have a long history of work and study at Flinders. I completed my Psychology Honours in 2009, and after enjoying the research process, worked as an RA on a health service project for older culturally and linguistically diverse (CALD) adults, before completing my PhD in Public Health (exploring migrant health and wellbeing post-widowhood) in 2016. After a short stint at the University of Adelaide post-PhD, I returned to Flinders as a Research Associate in the College of Nursing and Health Sciences for 2.5 years, and as a Research Fellow in the College of Medicine and Public Health for another year, before more recently joining the Social Work Innovation Research Living Space (SWIRLS) within the College of Education, Psychology and Social Work. I've been with SWIRLS for the last few months and it has been a reinvigorating, reenergising and overall fabulous experience thus far. I'm currently working across four projects in the domestic and family violence and child protection space, with an emphasis on knowledge translation for industry. SWIRLS reflects my personal and professional values and is a great fit.

### **Can you briefly describe the work/research journey that took you to this point in your career?**

Social health inequities, social determinants, intersectionality and a keen interest in migrant and refugee health has driven my research career thus far. I am particularly interested in privileging the voices of those who are routinely excluded from mainstream research – CALD individuals, non-English speaking migrants, older adults, people with disability, those who reside in rural and remote areas, and people who have experienced major life experiences and transitions (such as widowhood, domestic and family violence, or HIV). My Honours and PhD projects focused on the experiences and health and wellbeing of older Greek-Australian migrants in widowhood. Both projects were conducted in Greek to be inclusive of older non-English speakers, and harnessed my cultural and linguistic background to address a dearth in existing research.

### **What was your favourite part of being a postdoc and what was the hardest part of being a postdoc?**

My favourite part of being a postdoc is working across varied and interesting research projects and amassing skills beyond the ones I learned during my Hons and PhD. I (strangely) enjoy constructing detailed Ethics applications, particularly for projects with added complexities (those which involve people who may not speak English, sensitive research topics, children, etc.). I love being involved in fieldwork, particularly with respect to conducting in-depth interviews.

Unsurprisingly, the hardest part of being a postdoc is undoubtedly the tenuous nature of fixed term employment, which often isn't conducive in creating the conditions in which an ECR can most fully develop and thrive in terms of meaningfully contributing to teams and their own professional development (for example, HDR supervision, many grant schemes, etc. often rest on the assumption of longer-term contracts).

### **What is something you are most proud of?**

I am most proud of the times I've succeeded both professionally and personally during times of adversity, and also of my own growth during my post-doc roles.

### **What are your future ambitions?**

I am motivated to continue my social health research agenda with marginalised population groups, and to privilege the voices of those who are the least included in academic research to actively contribute to meaningful research with real-world impact. I am also interested in supervising and mentoring HDR students, in addition to attracting ECR grants and contributing to larger grants within teams.

### **How do you like to relax or spend your spare time?**

In my spare time, I surround myself with plants and dried florals (I started a small online business during the first 2020 lockdown). I am often the default taste tester for my husband's culinary creations (a role which I take far too seriously), and our mutual love for Anthony Bourdain has influenced past travel. You can also find me admiring street art, playing board games, and largely unsuccessfully attempting to rekindle my previous love affair with novels. In the past, powerlifting was my go-to stress release. I also have a penchant for Greek rap and a ravenous appetite for documentaries.



## Mind, Body and Cognition: Semester 1

**Mondays 4pm | North Theatre 5**

<b>May 2</b>	<b>Discipline meeting (Psychology academics)</b>
<b>May 9</b>	<b>Oren Griffiths</b> Vigilant brains: Using neural data to improve performance in applied settings
<b>May 16</b>	<b>Morgana Lizzio-Wilson</b> What type of ally are you? Using latent profile analysis to identify unique subgroups of advantaged allies
<b>May 23</b>	<b>Stephanie Wong</b> Disorders of motivation in dementia: Assessment, mechanisms and insights for interventions
<b>May 30</b>	<b>Isaac Williams</b> The exploration of emotion regulation failure on unhealthy eating behaviour <b>Alexis Howard</b> Self-compassion and well-being over a lifespan <b>Nepheli Beos</b> The impact of social media on body image and appearance-altering behaviours in young men <b>Max Kulbida</b> The role of impulsivity in excessive beverage consumption
<b>June 6</b>	<b>Discipline meeting (Psychology academics)</b>

## Contracts Management Module – Live Now!

The Research Development and Support team in collaboration with the Project team within IDS have been working on a new **Contracts Management Module** as a part of improving our research support and development services. This will enable transparency and ease of management of contractual obligations and related processes across the University.

While most of the steps in the contract management lifecycle will remain the same, there will be changes to the performance and administration of executed contracts with the introduction of the new tool.

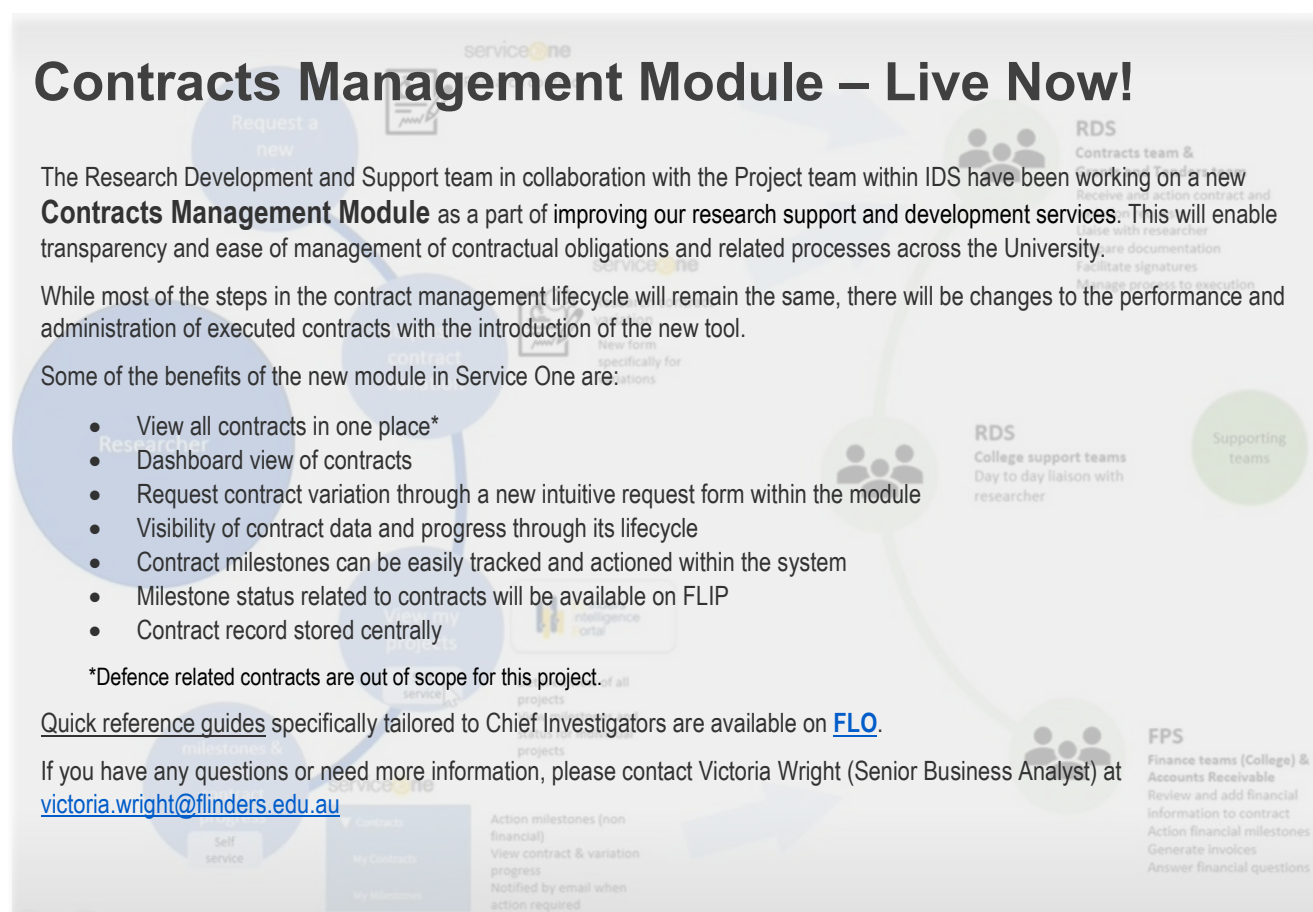
Some of the benefits of the new module in Service One are:

- View all contracts in one place\*
- Dashboard view of contracts
- Request contract variation through a new intuitive request form within the module
- Visibility of contract data and progress through its lifecycle
- Contract milestones can be easily tracked and actioned within the system
- Milestone status related to contracts will be available on FLIP
- Contract record stored centrally

\*Defence related contracts are out of scope for this project.

Quick reference guides specifically tailored to Chief Investigators are available on [FLO](#).

If you have any questions or need more information, please contact Victoria Wright (Senior Business Analyst) at [victoria.wright@flinders.edu.au](mailto:victoria.wright@flinders.edu.au)







**14 April 2022.** The National Elf. *CBT for eating disorders: Which approach works best for whom?* The article features the findings by Professor Tracey Wade that there is a gap in service provision regarding the number of treatment sessions offered for people with eating disorders. Since Covid-19 there has been a significant increase in the number of people with eating disorders.

**11 April 2022.** ABC Radio Adelaide. Interview with Dr Andrew Bills about his report "It's time to reflect" in response to the SA new education agenda that aligns itself with NAPLAN metrics which excludes disadvantaged schools and students.

**11 April 2022.** The Educator. ***Flinders University report urges SA public schools towards new direction***, featuring comments by Dr Andrew Bills on the need to rethinking the 'world class' aspiration that is currently based on narrow NAPLAN growth metrics and instead pursue a high equity inclusive education system.

**10 April 2022.** Adelaide Now. *What is gaslighting and is it happening to me?*, featuring Professor Damien Riggs' comments on gaslighting being conscious and unconscious with the unconscious being quite a gendered issue as it is often directed by men towards women. He said that women are doubted all the time, and that women's truths get questioned all the time.

**10 April 2022.** The Guardian; MSN Australia; Yahoo! News UK & Ireland (12 April). *Victorian government calls for paid family violence leave for all workers*, featuring Dr Kate Seymour's analysis of Australia's workplace agreement database for the Fairwork Commission in Victoria finding the benefits of paid leave far outweighs the associated costs to businesses.

**7 April 2022.** Scimex; MedIndia (8 April); Pharmacy Health News; Mirage News; Flinders News: Medical Forum (14 April). *National Obesity Strategy doesn't go far enough*, featuring comments by Dr Michelle Jones that the Federal Government's National Obesity Strategy lacks clear direction and disregards an existing model, the Obesity Prevention and Lifestyle program.

**6 April 2022.** Education Today; Mirage News (7 April); Flinders University; Geelong Advertiser (12 April). *McKinsey taking South Australian Public Schools in the wrong direction*, featuring comments by Dr Andrew Bills that the SA agenda for a 'world class' education system being closely tied to NAPLAN results, unfairly impacts poor and disadvantaged students and schools.

**5 April 2022.** EducationHQ. *'World class' SA education agenda disadvantages poorer schools: report*, featuring Dr Andrew Bills findings that the current SA education agenda unfairly impacts disadvantaged students and schools.

**3 April 2022.** 3RRR FM. Interview with Associate Professor Sarah Cohen-Woods on the research into epigenetics.

**2 April 2022.** Adelaide Now. *Boys outnumbered girls in Independent and Catholic schools*, featuring comments by Associate Professor David Curtis that larger number of girls' schools than boys' campuses contributed to the imbalance in coeducation enrolments.

**28 March 2022.** Mirage News. *Smart eating disorder options*, featuring Professor Tracey Wade's research into the need for smarter tailored service provision as a result of increased demand for more services.

**27 March 2022.** 5AA Radio; 6PR Radio; 4BC Radio; 3AW Radio; 2CC Radio. Interview with Professor Tracey Wade re the rise of people admitted to hospital for eating disorders, calling for a greater focus on efficiency and availability of treatment.

**26 March 2022.** News Azi. *Options for smart eating disorder through targeted services*, re Professor Tracey Wade's research into the need to improve the quality of targeted services being more important than providing more general services.

**24 March 2022.** Scimex; Kareem Ansari. *Smart eating disorder options*, featuring Professor Tracey Wade's research into the efficiency and availability of treatment options since increased demand for services has created a need for smarter tailored service provision.

**20 March 2022.** Sydney Morning Herald. *'Colonised by boys': How school playgrounds deter girls from physical activity*, featuring comments by Dr Kate Ridley re the need to redesign playgrounds which would address the gender divide.





# Higher Degree by Research

## Unsupervised: Q&A Sessions

Thank you to everyone who attended the first Q&A session about Confirmation of Candidature. There were many great questions asked and the panel members did an excellent job at answering the questions and sharing their experiences.

The next Q&A session will be about ethics/grants/scholarships on **5<sup>th</sup> May at 3.00pm** in **SSN239**. Please see the [FLO](#) page for more information about each of the sessions. We hope to see everyone there!

We are also calling out for panel members at these session, so please contact [ryan.calabro@flinders.edu.au](mailto:ryan.calabro@flinders.edu.au) if you would like to be one.

## HDR Student Committee Recruitment

**We are currently looking for more EPSW HDR students to the join the committee.** This is a great opportunity to build your CV, as well as your networking, team and organising skills. This is a low time commitment role, and you can dedicate as much time to the committee as you want to.

What will you do on the committee?

- Help organise events and social functions for HDR students
- Be the voice for EPSW HDR students
- Build cross-discipline student relationships
- Bring new ideas about study-life to the HDR Student Committee

Contact: [ryan.calabro@flinders.edu.au](mailto:ryan.calabro@flinders.edu.au) or [epsw-hdr-sc@FLINDERS.onmicrosoft.com](mailto:epsw-hdr-sc@FLINDERS.onmicrosoft.com)

## HDR Student Survey 2022

The EPSW HDR Student Committee run a yearly student survey to gauge students' thoughts and feelings about all facets of Uni life. The survey is important as it helps guide us make the best decisions for HDR students.

To guide our work, we would appreciate it if you could complete a brief survey for us (only takes about 10 minutes to complete). This is your chance to have your voice heard about issues that matter to you. All responses are anonymous and only select members of the student committee have access to your responses.

Thank you to everyone who has completed the survey so far, your responses and suggestions have been very helpful in recognising what issues are most important to HDR students in EPSW.

Please complete the survey with the following link: [https://qualtrics.flinders.edu.au/jfe/form/SV\\_a3Fwm8RHJtLzIH4](https://qualtrics.flinders.edu.au/jfe/form/SV_a3Fwm8RHJtLzIH4)

## CEPSW HDR Contacts

A reminder that if you have any concerns or questions that you might not feel comfortable asking your supervisor, please get in touch with any of the committee members and we will help you as best we can or point you in the right direction.

**Student Committee:** [epsw-hdr-sc@FLINDERS.onmicrosoft.com](mailto:epsw-hdr-sc@FLINDERS.onmicrosoft.com)

**Education:** [catherine.litchfield@flinders.edu.au](mailto:catherine.litchfield@flinders.edu.au)

**Psychology:** [ryan.calabro@flinders.edu.au](mailto:ryan.calabro@flinders.edu.au)

**Social Work:** [tess.cunningham@flinders.edu.au](mailto:tess.cunningham@flinders.edu.au)

**Link to CEPSW HDR FLO page:** <https://flo.flinders.edu.au/course/view.php?id=56481>

**Twitter:** <https://twitter.com/EPSWHDR>

## HDR Completions

Congratulations to **Blake Quinney** who completed a PhD (Clinical Psychology) for the thesis entitled *The value of truth for justice restoration and victims' healing*. Principal supervisor: Professor Michael Wenzel. Associate supervisor: Associate Professor Lydia Woodyatt.



## ResearchLink for funding searches

- [ARC Linkage Projects](#). Applications for Linkage Projects have opened. For Rounds information and internal closing dates please visit the [ResearchLink page](#).
- [Australia-Germany Joint Research Co-operation Scheme](#). This is a joint initiative of Universities Australia and the German Academic Exchange Service (DAAD), Germany's national agency for support of international academic cooperation. Submission deadline 27 June 2022.
- [Russell Sage Foundation 2022 programs in the field of Social Sciences](#). Key dates, letter of intent deadline 4 May 2022.



- [Biosafety Training](#). Flinders University Biosafety Training is now available as a [self-paced online course](#) via FLO. All students and staff working on a project involving gene technology, genetically modified organisms, pathogenic microorganisms, and those who will access or work with physical containment facilities on Flinders' campus and within Flinders Medical Centre are required to complete this training at commencement of their research and once every three years thereafter. If you have any questions please direct them to the Institutional Biosafety Committee: [ibcadmin@flinders.edu.au](mailto:ibcadmin@flinders.edu.au)
- [Center for Advancement of Research Methods and Analysis \(CARMA\) online training](#). Free research methodology online training is now available to Flinders University researchers through CARMA.
- [Cultures, Communities and Design](#). A conference connecting planning, landscapes, architecture and people. This is an online/in-person conference on 28-30 June held at the University of Calgary, Canada. Visit the website for information.
- **RESCHEDULED: Keeping Kids Connected to Learning and Schooling, Summit #2, 6 May 2022**. Dr Andrew Bills, the Commissioner for Children and Young People, Helen Connolly and Nigel Howard are running a second summit in response to the 2020 Graham Report on Suspensions, Exclusions and Expulsions (SEE). If you would like attend please email [Dr Andrew Bills](#).
- [Physical Education, Health, Athletics, Sports and Experiential Learning](#) (PHASE) will be running a series of online professional development workshops in 2022. 19 May: *The Spectrum of Teaching Styles in Outdoor Education*, presented by Joss Rankin.