



Research News

Dean of Research

Dear all,

I'd like to start by making a special mention of the people who have just submitted Discovery Project applications to the ARC. The call for applications came very late this year and people had to basically drop everything and put together an application within a very tight timeframe. In addition to applications led outside of the College, we had five applications led by academics in our College. This was an excellent effort, and we hope the outcomes will be good.

Congratulations also go to Jane Jarvis, Julie McMillan and their team for putting together a successful proposal for a new College Research Initiative. The RISE Initiative fills an important gap in our research goals and provides a focus for research in inclusive and specialised education. The RISE Initiative is the fourth College Initiative in addition to the Open Door, Blackbird and Generations Initiatives. Combined, I think all four Initiatives provide an important focus for our research.

Finally, you'll be aware that the University is working hard on preparing for the next round of ERA. Jane Jarvis, Sarah Wendt and I are making preparations for Education, Social Work and Psychology, respectively. One thing that becomes apparent is the large number of outputs that receive zero citations. It's inevitable that some papers receive only a few citations. Nevertheless, please consider ways of improving the impact of your research outputs. These ways can include: (a) making the paper open access (b) publishing with a large team and with international colleagues (c) citing your own work (if appropriate!) and (d) publishing in high quality outlets.

Very best,
-Mike





Associate Professor Ben Wadham and **Professor Emma Thomas**, together with Associate Professor James Connor (UNSW) and Dr Kellie Toole (Adelaide University), have been awarded **\$153,834** for the project *Mapping Service and Transition to Self-harm and Suicidality* project for the **Defence and Veteran Suicide Royal Commission**. The project draws upon 95 existing life history interviews on institutional abuse and veteran suicide and will conduct another 37 interviews with veterans who have attempted suicide and veterans in correctional facilities. The sociological autopsy methodology is used to map the life course of the veteran and detail their challenges with the ADF medical and justice systems. Software Receptiviti will also be used to computerise natural language processing to look at how patterns of language use co-occur (i.e., are related) in the interview data.

Dr Grace Skrzypiec, Dr Mirella Wyras, Dr Jane Jarvis and Dr Julie McMillan have been awarded **\$110,000** from the **Department of Education, Skills and Employment's Emerging Priorities Program** for the project *Promoting the social and psychological wellbeing of middle school and special needs students*. This study seeks to promote the social and psychological wellbeing (i.e. eudaimonia) of students returning to school following lockdown, using an evidenced-based intervention program.



Dr Andrew Bills received the 2022 **ACEL SA Distinguished Contribution to Research in Educational Leadership Award**. This Award is an acknowledgement of the significant contribution of a researcher in creating new work or use existing work in creative ways to generate tools in and encourage dialogue for critical thinking by practitioners, about, or related to the practice of leading in schooling or other educational contexts.



The Research in Inclusive & Specialised Education (RISE) Initiative team is led by Co-Directors Dr Jane Jarvis and Dr Julie McMillan. RISE is a cross-disciplinary research initiative aligned to the priorities of CEPSW, Flinders University, and the broader field of education related to transforming communities, addressing social justice issues and supporting vulnerable young people, including those with disability and specialised educational requirements.

Our mission is to produce and disseminate high-impact research that informs and enhances world class inclusive education for diverse young people

Building on a strong foundation of co-design and community engagement, the RISE initiative will enhance already established cross-disciplinary, inter-institutional and industry connections to assist progression towards the longer-term goal of becoming a research centre in inclusive education.

Through collaboration with industry leaders, educators, and policy makers, RISE aims to:

- advance the social justice and social transformation agenda of the College by improving the lives of marginalised young people and local communities.
- become Australia's leading provider of world class interdisciplinary research in inclusive education to inform teachers, allied professionals, educational leaders, and policy makers.
- enhance and expand Flinders' research profile in inclusive education through competitive research grants and innovative dissemination activities.
- attract and develop outstanding HDR students and post-doctoral researchers.
- leverage synergies between research, teaching and industry engagement to maximise the real-world impact of our work.
- develop new opportunities for interdisciplinary research within CEPSW and across college boundaries.

Our team includes early career and established researchers from CEPSW, CNHS and CSE, and teaching specialists who will support dissemination activities including professional learning and consultancy, and is supported externally by academics, an industry stakeholder advisory group and an international academic advisory group.

Flinders University RISE Initiative members include:

Jane Jarvis	Anne Bayetto	Robyn Young	David Hobbs
Julie McMillan	Peter Walker	Lorna Hallahan	Emma Grace
Kerry Bissaker	Lesley Henderson	Catherine Johnson	Jo Arciuli
Carol Le Lant	Raj Brij	Pammi Raghavendra	Alinka Fisher
Grace Skrzypiec			

Publications

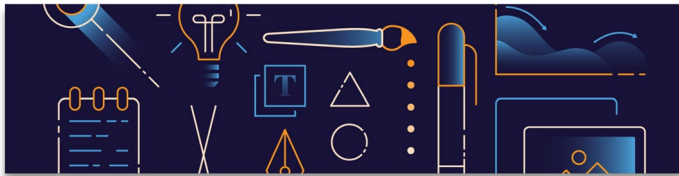


Refereed Journal Articles

- Bailey, C., Prichard, I., Drummond, C., & Drummond, M. (2022). Australian adolescents' beliefs and perceptions towards healthy eating from a symbolic and moral perspective: A qualitative study. *Appetite*, 171, [105913]. Doi: 10.1016/j.appet.2022.105913
- Bills, A., Howard, N., & Bell, M. (2022). Changing and challenging dimensions of principal autonomy in South Australia: A lived experience phenomenological analysis of the courage to care. *Journal of Educational Leadership, Policy and Practice*, 36(1), 78-95.
- Butt, Z., Kirsten, L., Beatty, L., Kelly, B., Dhillon, H., & Shaw, J.M. (2022). Barriers and enablers to implementing telehealth consultations in psycho-oncology. *Psycho-Oncology*. DOI: 10.1002/pon.5939
- Deek, M.R., Kemps, E., Prichard, I., & Tiggemann, M. (2022). The effect of a healthy food cue on choices from an online fast-food menu. *Eating Behaviors*, 45, 101362.
- Drummond, M., Drummond, C., Elliott, S., Prichard, I., Pennesi, J-L., Lewis, L., Bailey, C., & Bevan, N. (2022). Girls and Young Women in Community Sport: A South Australian Perspective. *Frontiers in Sport and Active Living*, 3, [803487]. Doi: 10.3389/fspor.2021.803487
- Drummond, M., Wadham, B., Prichard, I., Elliott, S., Drummond, C., & Crossman, S. (2022). Level playing field: young males, masculinity and mental wellbeing through sport. *BMC Public Health*, 22, [756]. Doi: 10.1186/s12889-022-13200-1
- Eime, R., Harvey, J., Charity, M., Elliott, S., Drummond, M., Pankowiak, A., & Westerbeek, H. (2022). The impact of COVID-19 restrictions on perceived health and wellbeing of adult Australian sport and physical activity participants. *BMC Public Health*, 22(848), 1-14. Doi: 10.1186/s12889-022-13195-9
- Fassnacht D.B., Ali K., van Agteren J., Iasiello M., Mavrangelos T., Furber G., & Kyrios M. (2022). A group-facilitated, internet-based intervention to promote mental health and well-being in a vulnerable population of university students: Randomized controlled trial of the Be Well Plan Program. *JMIR Mental Health*, 9(5), e37292. Doi: 10.2196/37292
- Montero, A., Stevens, D., Adams, R., & Drummond, M. (2022). Sleep and Mental Health Issues in Current and Former Athletes: A Mini Review. *Frontiers in Psychology*, 13, 1-9. [868614]. Doi: 10.3389/fpsyg.2022.868614
- O'Donnell, K., Elliott, S. K., & Drummond, M. J. (2022). Exploring parent and coach relationships in youth sport: A qualitative study. *Qualitative Research in Sport, Exercise and Health*. Doi: 10.1080/2159676X.2022.2048060
- Truskewycz, H., Drummond, M., & Jeanes, R. (2022). Negotiating participation: African refugee and migrant women's experiences of football. *Sport in Society: Cultures, Commerce, Media, Politics*, 25(3), 582-601. Doi: 10.1080/17430437.2022.2017819

Report

- Jiang, Z., Wang, Y., Riggs, D.W., Mate, S., & Chapman, A. (2022). Supporting careers of LGBTQIA+ students in Australian universities. Report for the National Centre for Student Equity in Higher Education.



Presentations

- McMillan, J. M., & Jarvis, J. M. (2022, April). *Ensuring inclusive outcomes for young people with disability within schoolwide PBS*. Paper presented to the Association for Positive Behavior Support International Conference [Online], San Francisco, USA.
- Pill, S. (2022, May). *Personalised system of instruction for physical education*. ACT Affiliated Schools Project.
- Pill, S. (2022, May). *Inquiry approaches to physical education*. Association of Independent Schools NSW Pre-Conference Masterclass, King George V Recreation Centre, The Rocks, Sydney.
- Pill, S. (2022, May). Association of Independent Schools NSW PDHPE Conference. *Decolonising physical education workshop and Keynote panel: student centred PE*. Luna Park, Milsons Point, Sydney.
- Riggs, D. (2022, April). Delivery of training to the Victorian Inner Eastern Schools group on the topic *A strengths-based approach to supporting LGBTIQ students*.
- Riggs, D. (2022, April). Delivery of a webinar to the Australian Psychological Society's College of Educational and Developmental Psychologists on the topic *Providing affirming care to trans young people*.
- Rowley, G. (2022, May). Presented *Diversity considerations for aged care and palliative care* at the Research Centre for Palliative Care, Death and Dying (RePaDD) Seminar Series as an invited guest speaker (Adelaide).



Five CEPSW researchers have applied for an ARC's Discovery Project 2023 grant, as follows:

- Professor Eva Kemps (lead CI), with Associate Professor Ivanka Prichard (CHS) and Emeritus Professor Marika Tiggeman, applied for the project *UberEats anyone? Promoting healthier food choices from online menus*.
- Associate Professor Melanie Takarangi (lead CI), with Professor Reg Nixon, Associate Professor Carolyn Semmier (University of Adelaide) and Dr Ella Moeck (University of Melbourne), applied for the project *The cost of keeping gruesome images from the world: Content moderation and psychological harm*.
- Professor Damien Rigg (lead CI), together with Associate Professor Clemence Due (University of Adelaide), Dr Ben Lohmeyers, and Associate Professor Yvonne Clark (University of South Australia), applied for the project *Understanding vicarious trauma in Australian foster care*.
- Professor Tracey Wade (lead CI) and Dr Gemma Sharp (Monash University), applied for the project *A model of barriers and facilitators to seeking help for disordered eating*.
- Associate Professor Ben Wadham (lead CI), with Professor Sharon Lawn, Dr Margaret Hutchison (Australian Catholic University), Associate Professor Udoy Saikia, and Associate Professor Karl Hamner (University of Alabama), applied for the project *Veteran suicide: investigating the historical and social dimensions*.

Social Work Innovation Research Living Space



New website

[SWIRLS new website](#) is live! SWIRLS website has been refreshed to reflect our new membership for 2002-2005. Also included is a new Partnerships and Projects page and Resources page for access to SWIRLS reports, publications, podcasts, public lectures and media.

Nordic Summer University Study Circles

As part of SWIRLS International collaboration with [CSWIR \(University of Sussex\)](#), SWIRLS participated in the [Nordic Circles Study Group](#) conference on decolonising social work on Monday 9th May (live, online with University of Helsinki, Norway). Two resources were produced as a result of this event. Firstly, a recorded conversation in response to a paper by Aboriginal social work academics Sue Green and Bindi Bennett posing the challenge: '[Decolonising requires the individual and in turn the profession to undergo a journey of self-discovery and a personal process of decolonising themselves](#)'. This recording was provided as a resource for use at the Norway conference.



A live Welcome to Country by Uncle Mickey O'Brien was broadcast to the Norway conference, followed by SWIRLS members engaging in a group forum, about the importance of an Acknowledgement of Country and Australia's historical context, colonial legacies and continuing impacts.

By creating a space for regular collaboration over an extended period of time, durable networks in the Nordic-Baltic region and beyond grow out of the study circles. The circles provide a cross-disciplinary forum for debating topics that are not already established in universities, thereby contributing to the initiation of new research agendas and alternative perspectives.

PhD and Honours Research Seminar

SWIRLS PhD and Honours research seminar – topic 'Building an ECR track record' – was held on 3rd May 2022. Professor Sarah Wendt presented her tips on building a successful research career and members benefited from a rich discussion on their aspirations and future pathways.

Domestic Violence Awareness Month

Professor Sarah Wendt marked Domestic Violence Awareness Month with a story on the [SWIRLS Scoop](#) blog. laws in an article for ABC News.

Peak Body – Child and Family Focus SA

On 6th May, Sarah Wendt and Carmela Bastian were invited as guest panellists by the Peak Body – Child and Family Focus South Australia - alongside the Guardian for Child and Young People – to talk about: Improving Family Wellbeing and Child Protection and facilitate discussions on what are the priorities for the next four years in SA. A report is being compiled to present to the appropriate Ministers.

Podcasts

Luke Cantley recently recorded an episode on the [Kris Clarke and The Social Work Routes podcast](#). Through his research Luke seeks to understand the role Indigenous culture plays as a protective factor within the child protection system, whilst also exploring the nuances between child safety and cultural safety. Luke has gained extensive experience working as an Aboriginal Health Worker using a strengths-based approach across diverse sectors including Prison Health, Primary Health Care, Public Housing and Mental Health Services. Luke has family connections to the Gunitjmarra nation of Victoria (Australia) and is a Research Associate located within the Social Work Innovation Research Living Space (SWIRLS) at Flinders University. The episode is titled *Health inequities and decolonisation*.

Social Work lecturer Ben Lohmeyer recently hosted SA Minister for Human Services and Flinders graduate Nat Cook MP on his podcast [Making and Breaking Social Policy](#).



SWIRLS PhD Candidate and Associate Lecturer in Social Work, Chris Reynolds, discussed the topic of *Uncertainty in social work* in a cross Centre conversation as a special guest for the Centre for Social Work Innovation and Research's (CSWIR) 2022 podcast series.

In the Media

[South Australia decriminalised abortion more than a year ago, but nothing has changed](#) - SWIRLS Member, Associate Professor Catherine Kevin discusses how South Australia is behind the rest of Australia in implementing its new abortion laws in an article for ABC News



Dr Sharyn Goudie



Spotlight Series: ECR and Mid-Career Researchers

With the aim of raising awareness of the amazing early- and mid-career researchers within our College, we will be profiling and sharing the successes of a different ECR/MCR each month. It is my pleasure to introduce to you Dr Sharyn Goudie!!

Dr Ryan Balzan, ECR College Representative

When did you come to Flinders and what is your current role within the College?

In 2019 I took on a Research Associate role in the Centre for Crime Policy and Research in Flinders Criminology. This role allowed me to develop my research skills and work on diverse projects including the use of guns in crime and a study into the use of methamphetamines in regional areas. In early 2022, I moved to my current position as a Research Fellow in the College of Education, Psychology and Social Work. Specifically, I am working with the Social Work Innovative Research Living Space (SWIRLS) on two major projects – one focused on understanding experiences of home for children and young people in state care and the other focused on strengthening the domestic and family violence workforce.

Can you briefly describe the work/research journey that took you to this point in your career?

Initially, I did not plan on becoming an academic. Prior to working at Flinders I had spent 15 years working as a social worker and later research and development manager in the non-government sector. My primary work was with young people experiencing homelessness and I would later work in the mental health sector with a focus on training and development and the lived experience workforce. Throughout my work I continued to be curious about what were the best ways to support a young person to access and retain stable housing, and why different strategies worked for different young people. This led to my taking on a PhD with the University of Adelaide's then Gender Studies and Social Analysis department. My PhD investigated how youth housing models designed for young people exiting or at risk of homelessness impacted on their experience of citizenship. The PhD process challenged a lot of my conceptions as a social worker and enabled me to rethink how workers could best assist the people that rely on their services.

What was your favourite part of being a postdoc and what was the hardest part of being a postdoc?

My favourite part of being a postdoc is the time it gives you to unpack ideas and really think through research concepts and design. Currently, I am enjoying being able to spend time rethinking how we communicate with research participants in an ethical manner, including reworking information sheets for children and young people and Aboriginal and Torres Strait Islander peoples.

I think the hardest part about being a postdoc is learning to navigate expectations and making sure that you are meeting your own career milestones when working on other people's projects. I have been lucky to have been mentored by some exceptional academics that have helped me to get my own runs on the board which I may not have initially identified as possible.

What is something you are most proud of?

I don't necessarily have one thing that I am most proud of, if anything it would be my passion to take every opportunity to keep learning and developing that comes my way.

What are your future ambitions?

To be able to continue to work on research projects that promote the voices of people that are not often heard. Particularly, projects that use this knowledge to promote just social policy and help improve systems and services for both the individuals who need them and the workers that provide them.

How do you like to relax or spend your spare time?

I spend a lot of time keeping my dog entertained which involves a lot of walks and I am currently channelling that activity into 'trying' to get ready for coast trek with some friends. Besides that I love books, movies and making the most of Adelaide's amazing restaurants.



Mind, Body and Cognition: Semester 1

Mondays 4pm | North Theatre 5

May 23	Stephanie Wong Disorders of motivation in dementia: Assessment, mechanisms and insights for interventions
May 30	Isaac Williams The exploration of emotion regulation failure on unhealthy eating behaviour Alexis Howard Self-compassion and well-being over a lifespan Nepheli Beos The impact of social media on body image and appearance-altering behaviours in young men Max Kulbida The role of impulsivity in excessive beverage consumption
June 6	Discipline meeting (Psychology academics)



& Professional Services

- Dr Andrew Bills contributed an article titled *It's time for authentic curriculum* in the April issue of the AEU Journal SA. The article highlights the recently published report "*It's time to reflect*"- co-authored with Dr Nigel Howard, which focused "on the need to rethink the world-class aspiration in education that is currently based on narrow NAPLAN growth metrics and instead pursue a high equity inclusive education system".
- Professor Damien Riggs was asked to provide input on a new parenting guide developed by Parenting SA, focused on parents/carers of trans and gender diverse children and young people.
- Professor Damien Riggs was asked to provide input to a communities of practice undertaken for CAHMS, focused on supporting trans and gender diverse long people from culturally and linguistically diverse backgrounds.
- Associate Professor Prof Ben Wadham has been invited to be the Australian representative on a Northern Atlantic Treaty Alliance (NATO) research task group considering domestic radicalisation prevention and intervention practices of NATO members as applied to service members and veterans. The project requires travel to Paris, France in early June for one week to attend the initial project meeting.
- Associate Professor Tim Windsor has been made a [Fellow of the Gerontological Society of America \(GSA\)](#). With its headquarters based in Washington DC, the GSA is the world's oldest and largest interdisciplinary organisation devoted to research, education, and practice in the field of aging. Fellow status is the highest category of membership and is an acknowledgement of outstanding and continuing work in the field of gerontology.



15 May 2022. TechRadar. *I'm a runner, and I've just joined Strava. I regret it.*, featuring research by Eva Kemps in collaboration with Jasmine Petersen, Ivanka Prichard and Lucy Lewis (College of Nursing and Health Sciences) on the use of physical activity apps.

15 May 2022. Mirage News; News-Medical Life Sciences; Knowledia News. *Added burden on young onset Alzheimer's disease*, featuring Dr Monica Cation's comments on the more is known about the disease in young people, the better clinicians can be with prognosis and care planning.

13 May 2022. Bendigo Advertiser. *Game addictions strategies*, article features published research findings *Parent-delivered contingency management for a treatment-refusing young adult with gaming disorder: A case report* co-authored by Associate Professor Dan King, in the Journal of Family Therapy.

12 May 2022. AlphaGalileo. *Mental illness, disability may prejudice judgements, study finds*. Features Dr Alyzza Lim's and Professor Robyn Young's research findings on *Atypical behaviours found in some mental health conditions negatively effect judgements of deception and credibility*, published in the Australian Journal of Psychology.

7 May 2022. The Courier Mail; The Mercury. *Uniform justice: Telegraph campaign to end Defence abuse of women*, and, *Calls for royal commission into veteran suicide*. Articles feature Associate Professor Ben Wadham on senior officers using their position to bully victims into silence, or force them out of the defence force, when reporting sexual assault.

7 May 2022. Daily Telegraph. *Secrecy tips scales of justice* and *How men use their positions to attack*, featuring comments by Associate Professor Ben Wadham on research findings that the army and the navy are high risk work environments, especially for female personnel. Rank assaults were a problem and that higher ranked officers use their authority to bully victims of sexual assault into not reporting the attack. Military sexual assault is highly traumatic, partly because of the sense of institutional betrayal.

6 May 2022. ABC 7.30 Report. *Court battle: Elite soldiers quizzed in Ben Roberts-Smith war crimes defamation trial*, with Associate Professor Ben Wadham commenting on the SASR culture and their involvement in the war crimes.

6 May 2022. Adelaide Now. *What is weaponised incompetence and how do you stamp it out?* The article focuses on people pretending to be incompetent at a job as they don't want to do the job, and features Professor Michael Wenzel's comments that in order for others to support or help us we can present ourselves as less positively, namely as weak, vulnerable and helpless. Pretending that one cannot do something, or is bad at it, leads the other other to take it upon themselves to do the job. In heterosexual relationships this is often a gendered process.

4 May 2022. ABC Pilbara. Interview with Kayleigh O'Donnell (PhD Candidate, SHAPE) re the reasons that difficult relationships between sporting coaches and parents exist which form part of research findings published in *Exploring parent and coach relationships in youth sport: A qualitative study* (Journal of Qualitative Research in Sport, Exercise and Health).

30 April 2022. Adelaide Advertiser, *My Name is Jake*, featuring expert comments by Professor Damien Riggs on gender dysphoria; gender being a deeply felt phenomenon; the need to keeping talking about family relationships; suicide rates of young people with dysphoria drop sharply once taking the first step on the path to transition.

30 April 2022. The National Tribune; IndiaEducationDairy (4 May). *Unique relationship between coach and parent*, featuring comments by Kayleigh O'Donnell (PhD Candidate, SHAPE) on the complex and sometimes heated relationship between sporting coaches and parents, which is often overlooked, and, when parents behave badly and coaches cross the line it can have a negative effect on children playing sport.

28 April 2022. 5AA. Interview with Kayleigh O'Donnell (PhD Candidate, SHAPE) re the issue of difficult relationships between sporting coaches and parents as part of research findings published in *Exploring parent and coach relationships in youth sport: A qualitative study* (Journal of Qualitative Research in Sport, Exercise and Health).

25 April 2022. ABC Radio Darwin. Interview with Associate Professor Ben Wadham on the Royal Commission into Defence and Veteran Suicides, speaking about institutional abuse and the military justice system; risks of veteran suicides; challenges of reintegration into civilian life after military service, and the need for support services and systems.



Higher Degree by Research

Unsupervised: Q&A Sessions

Thank you to everyone who attended the second Q&A session about ethics, grants, and scholarships. Once again, so many great questions were asked and a huge thank you to the panel members that did an amazing job at answering the questions and sharing their experiences.

The next Q&A session will be about publishing on **2nd June at 3.00pm** in **SSN239**. Please see the [FLO](#) page for more information about each of the sessions. We hope to see everyone there!

We are also calling out for panel members at these session, so please contact ryan.calabro@flinders.edu.au if you would like to be one.

HDR Student Committee Recruitment

We are currently looking for more EPSW HDR students to the join the committee. This is a great opportunity to build your CV, as well as your networking, team and organising skills. This is a low time commitment role, and you can dedicate as much time to the committee as you want to.

What will you do on the committee?

- Help organise events and social functions for HDR students
- Be the voice for EPSW HDR students
- Build cross-discipline student relationships
- Bring new ideas about study-life to the HDR Student Committee

Contact: ryan.calabro@flinders.edu.au or epsw-hdr-sc@FLINDERS.onmicrosoft.com

HDR Student Survey 2022

The EPSW HDR Student Committee run a yearly student survey to gauge students' thoughts and feelings about all facets of Uni life. The survey is important as it helps guide us make the best decisions for HDR students.

To guide our work, we would appreciate it if you could complete a brief survey for us (only takes about 10 minutes to complete). This is your chance to have your voice heard about issues that matter to you. All responses are anonymous and only select members of the student committee have access to your responses.

Thank you to everyone who has completed the survey so far, your responses and suggestions have been very helpful in recognising what issues are most important to HDR students in EPSW.

Please complete the survey with the following link: https://qualtrics.flinders.edu.au/jfe/form/SV_a3Fwm8RHJtLzIH4

CEPSW HDR Contacts

A reminder that if you have any concerns or questions that you might not feel comfortable asking your supervisor, please get in touch with any of the committee members and we will help you as best we can or point you in the right direction.

Student Committee: epsw-hdr-sc@FLINDERS.onmicrosoft.com

Education: catherine.litchfield@flinders.edu.au

Psychology: ryan.calabro@flinders.edu.au

Social Work: tess.cunningham@flinders.edu.au

Link to CEPSW HDR FLO page: <https://flo.flinders.edu.au/course/view.php?id=56481>

Twitter: <https://twitter.com/EPSWHDR>

Industry Mentoring Network (IMNIS) in STEM

You will have received an email from HDR Engagement to notify you that applications are now open for the [IMNIS](#) mentoring program. You will need to have completed Confirmation of Candidature by 1st June 2022. Please first discuss this opportunity with your supervisor.



ResearchLink for funding searches

- [ARC Linkage Projects](#). Applications for Linkage Projects have opened. For Rounds information and internal closing dates please visit the [ResearchLink page](#).
- [Australia-Germany Joint Research Co-operation Scheme](#). This is a joint initiative of Universities Australia and the German Academic Exchange Service (DAAD), Germany's national agency for support of international academic cooperation. Submission deadline 27 June 2022.



- [Biosafety Training](#). Flinders University Biosafety Training is now available as a self-paced online course via FLO. All students and staff working on a project involving gene technology, genetically modified organisms, pathogenic microorganisms, and those who will access or work with physical containment facilities on Flinders' campus and within Flinders Medical Centre are required to complete this training at commencement of their research and once every three years thereafter. If you have any questions please direct them to the Institutional Biosafety Committee: ibcadmin@flinders.edu.au
- [Center for Advancement of Research Methods and Analysis \(CARMA\)](#) online training. Free research methodology online training is now available to Flinders University researchers through CARMA.
- [Cultures, Communities and Design](#). A conference connecting planning, landscapes, architecture and people. This is an online/in-person conference on 28-30 June held at the University of Calgary, Canada. Visit the website for information.
- [Research Finance: Principles, Systems, and Dashboard](#). Presented by Finance and Procurement Services for all researchers. Web Conference: Tuesday 26th July; Friday 7th October.
- [Physical Education, Health, Athletics, Sports and Experiential Learning](#) (PHASE) will be running a series of online professional development workshops in 2022. 19 May: *The Spectrum of Teaching Styles in Outdoor Education*, presented by Joss Rankin.
- [Productivity with P.U.N.C.H.](#) This workshop is designed to strengthen the productivity mindset and provides participants with new strategies; develop and own their own best practice strategies; and, an opportunity to share their own best practices initiatives. Friday, 27th May 2022.
- [Pitch It Clever 2022](#) – now open for submissions. Pitch It Clever is an annual competition by the Universities Australia challenging early career researchers to communicate their research and why it matters to non-specialist audiences via short videos. Dr Sam Elliott won this in 2019.
- [Foreign Arrangements – Explained](#). Check out the new flowchart and watch the information session for researchers about Foreign Interactions by Mark Poczman, Compliance Officer from Governance, Legal and Risk.