

Research News

Dean of Research

Dear all,

Last month was very exciting and a lot happened. The Dean of Research Meet and Greet, held on the 29th of June, exceeded my expectations with an overwhelming and enthusiastic in-person attendance. Your presence and active engagement made this event a delightful experience. As we move forward, our dedicated team is diligently collating the invaluable feedback we received during the Meet and Greet. Your insights and suggestions are of utmost importance to us as they will guide the course of our future research endeavours.

The past month also provided me with invaluable opportunities to participate in several productive meetings with key stakeholders, each holding immense potential for impactful collaborations: Indigenous Mental Health and Wellbeing, Child and Adolescent Mental Health, Peer-led Community Initiatives for Mental Health, and Little Heroes and Breakthrough Mental Health Foundation Gala dinner and Workshop. We will continue to engage with these key stakeholders to identify and explore mutual collaborative opportunities to work towards targeted initiatives.

I also had a chance to attend Higher Education Research and Development Society of Australasia (HERDSA) conference in Brisbane. I am thrilled to share that I will be co-convening the HERDSA conference in Adelaide next year – an endeavour that fills me with both pride and anticipation. I had a truly unforgettable fan boy moment when I had the privilege of witnessing an in-person interview conversation between the Honourable Minister Penny Wong and the renowned journalist Kerry O'Brien. The exchange of ideas and insights was captivating, leaving an indelible impression on me.

If you wish to discuss your research aspirations, seek collaboration opportunities, or simply share your passion for academia, I am here to offer my support, I extend an invitation to you to arrange a meeting with me via [Elizabeth Traeger](#).

Keep up the amazing work 😊

Raj



Matthew Flinders Professor Emma Thomas



Matthew Flinders Professor

A warm congratulations to Professor Emma Thomas who is one of seven Matthew Flinders Professors that were recently announced by the Vice-Chancellor, Professor Colin Stirling. Emma has been recognised for her research which explores the ways that people come together to resist social inequality and social injustice. Her published work includes exploration of psychological drivers that lead to the commitment of humanitarian assistance, and the role of emotion and personal and collective identity in facilitating different forms of social protest.

A Matthew Flinders Professorship is awarded to individuals who have sustained outstanding research performance or scholarly, creative and artistic achievements, with a track record of distinguished contribution to research as evidenced by the awarding of external funding. Individuals must also showcase outstanding service to the University, professional or public life in the form of research leadership, mentorship or other researchers or supervision of HDR students.



17 July 2023. ABC Radio Adelaide. Interview with Associate Professor Jess Patterson re bed rotting, a new term for an old phenomenon of pregnant women needing bed rest, and also a term when spending a lot of time in bed, reading, sleeping and eating. Spending too much time in bed can have a negative impact on mental health and ability to easily go to sleep at night.

5 July 2023. The Conversation. *Parents have just started their own school in Sydney – this is part of a long tradition in Australia*, by Dr Andrew Bills and Nigel Howard. Article comments on the long tradition of parents and local communities starting their own schools in Australia if they feel what's on offer is not suiting their families' needs. Hashtag.com.au, Bounty Parents, MSN (6 July);

5 July 2023. Channel 10 First News at 5pm. Spotlight on gaming with the World Health Organisation deciding to classify gaming disorder as an official diagnosis. Features Associate Professor Daniel King research that challenges prevailing misconceptions about gamers, and Christina Galanis (game design student). Casual gamers experienced less stigma than regular gamers and regular gamers experienced less stigma than problem gamers.

2 July 2023. The Advertiser; NT News; and associated press. *Better Education website ranks SA secondary schools*, featuring comments by Dr Andrew Bills saying that the Better Education rankings reveal 'an unequal playing field' in the state's education system, where schools located in the wealthier postcodes in Adelaide are the schools ranking near the top. Rankings were based only on what can be measured but the rankings do not take into account important skills and traits like team work, problem solving, creativity, critical thinking of empathy.

29 June 2023. ABC Radio Adelaide. Interview with Associate Professor Lydia Woodyatt commenting on reasons for why we procrastinate where the brain is deciding where it's going to spend its energy, and whether it is worth our time or not. What could help is, for example, to break down any big task into really small concrete steps.

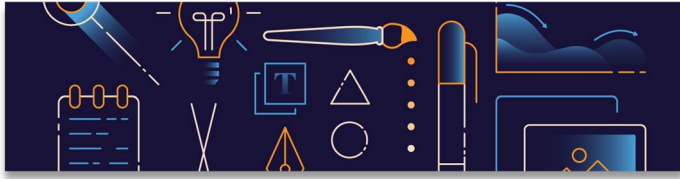


Book Chapters

- Riggs, D.W., Pearce, R., Hines, S., Pfeffer, C., & White, F.R. (2023). Whiteness in research on men, trans/masculine and non-binary people and reproduction: Two parallel stories. In S. A. Tate, C. Lundström, S. Keskinen & R. Andreassen (Eds.), *Handbook on new critical race and whiteness theory*. Routledge.
- Patlamazoglou, L., Simmonds, J.G., Snell, T.L., & Riggs, D.W. (2023). Continuing bonds with deceased gay partners in mid and later life. In P. Willis, I., Pietilä, & M. Seppänen (Eds.), *Ageing, men and social relations: New perspectives on masculinities and men's social connections in later life*. Policy Press.

Refereed Journal Articles

- Balzan, R. P., Gilder, M., Thompson, M., & Wade, T. D. (2023). A randomized controlled feasibility trial of metacognitive training with adolescents receiving treatment for anorexia nervosa. *International Journal of Eating Disorders*. Doi: 10.1002/eat.24009
- Burton, O. R., Bodner, G. E., Williamson, P., & Arnold, M. M. (2023). How accurate and predictive are initial judgements of solvability? Explorations in a two-phase anagram solving paradigm. *Metacognition and Learning*, 18, 1-35. Doi: 10.1007/s11409-022-09313-y
- Cesur, E., Moritz, S., Balzan, R. P., Scheunemann, J., Gabbert, T., Aleksandrowicz, A. & Fischer, R. (2023). Hasty decision making and belief inflexibility in the more delusion-prone? A modified disambiguating-scenarios paradigm assessing cognitive biases implicated in delusions. *Schizophrenia Research* (in press).
- Cruickshank, V., Pill, S., et al., (2023). Primary school Physical Education (PE) specialist teachers' experiences of teaching Health Education and Physical Education. *Curriculum Perspectives*. Doi: 10.1007/s41297-023-00208-9
- Cruickshank, V., Pill, S., et al. (2023). Exploring the 'everyday philosophies' of generalist primary school teacher delivery of health literacy education. *Curriculum Studies in Health and Physical Education*, 14(2), 207-222.
- Cruickshank, V... Pill, S. et al. (2023). 'It's not a priority': Australian generalist classroom teacher experiences of teaching the Health Education component of Health and Physical Education. *Curriculum Perspectives*. Doi: 10.1007/s41297-023-00204-z
- Deek, M.R., Prichard, I., & Kemp, E. (2023). The Mother-Daughter-Sister Triad: The role of female family members in predicting body image and eating behaviour in young women. *Body Image*, 46, 336-346. Doi: 10.1016/j.bodyim.2023.07.001.
- MacKenzie, M., & Wadham, B. (2023). Is the problem with military culture one of bad apples or bad orchards?: War crimes, scandals, and persistent dysfunction. *Australian Journal of Political Science*. Doi: 10.1080/10361146.2023.2223502
- May, A., Balzan, R., Sved-Williams, A., Wade, T., & Paranjothy, S. M. (2023). Interventions for perinatal borderline personality disorder and complex trauma: A systematic review. *Archives of Women's Mental Health* (in press), Doi: 10.1007/s00737-023-01313-4.
- Pill, S., Agnew, D., & Abery, E. (2023). Reflections on a community youth sport coach developer initiative, *Annals of Leisure Research*. Doi: 10.1080/11745398.2023.2227745
- Sulik, J., Ross, R., Balzan, R. P., McKay, R. (2023). Delusional Ideation and Data Quality: Are classic cognitive biases an artefact of inattention? *Journal of Psychopathology and Clinical Science*. Doi: 10.1037/abn0000844
- Williams, H. L., Bodner, G. E., & Lindsay, D. S. (2023). Recognition, remember-know, and confidence judgments: No evidence of cross-contamination here! *Memory*, 31, 905-917. Doi: 10.1080/09658211.2023.2207804
- Yu-Tung J., Sun, Y.J., Takarangi, M.K.T., & Nixon, R.D.V. (2023). Exploring intrusions without awareness: Characteristics and influences of meta-awareness failures. *Journal of Behavior Therapy and Experimental Psychiatry*. Doi: 10.1016/j.jbtep.2023.101889
- Zhang, B., Meng, Z., Li, Q., Chen, A., & Bodner, G. E. (2023). EEG-based univariate and multivariate analyses reveal that multiple processes contribute to the production effect in recognition. *Cortex*, 165, 57-69. Doi: 10.1016/j.cortex.2023.04.006
- Zhao, L., Bidargaddi, N., Vakulin, A., Li, W., Luscombe-Marsh, N., Benton, F., Adam, R., Kemp, E., Vincent, A.D., Heilbronn, L.K., & Wittert, G.A. (2023). A micro-randomized pilot study to examine the impact of just-in-time nudging on after-dinner snacking in adults with type 2 diabetes: A study protocol. *Diabetes, Obesity and Metabolism*. Doi:10.1111/dom.15159
- Zomerdiik, N., Bryant, C., & Beatty, L. (2023). Enabling psychologists to address the psychological consequences of cancer, *Australian Psychologist*, Doi: 10.1080/00050067.2023.2225693



Presentations

Presentations at the 19th General Meeting of the European Association of Social Psychology held in Krakow, Poland, as follows:

- Bird, L. (2023, June). Presented *'We despair': Examining the role of political despair for collective action and well-being.*
- Buonaiuto, E. (2023, June). Presented *When do people take the perspective of other group members? A meta-analysis of the effects of perspective-taking in intergroup attitudes and actions*
- Quarisa, C. (2023, June). Presented *Conspiracy beliefs: The interactive role of thinking styles and consensual validation.*
- Thomas, E. (2023, June). Presented *Conspiracy and misinformation in a post-truth world: Effects of misbeliefs on reactionary social movements in times of social change.*
- Yip, L. (2023, June). Presented *Does the quality of motivation matter for collective action? Integrating self-determination theory and the social identity approach.*
- Smolarek, L., Wenzel, M., & Woodyatt, L. (2023). Poster presentation titled *Self-threat and helping behaviour: The role of self-compassion.*
- Zhao, F., Woodyatt, L., Wenzel, M., & Zhao, K. (2023, June). Presented blitz-talk *Be strict with oneself and lenient towards others: The influence of Confucianism on other-forgiveness and self-forgiveness.*
- Zhao, K., Berndsen, M., Woodyatt, L., & Barron, A. (2023, June 30–July 4). *Why do people engage in online shaming, and who participates? A case study of shaming and shaming backlash on Twitter [Conference session].*



Dr Carol Aldous with student Jessica Newbury presented a paper titled *Does improving numeracy improve first year university chemistry attitudes and achievement?* At the 2023 International Conference of the Australasian Science Education Research Association (ASERA) in Cairns, 27-30 June.

Nixon, R.D.V. (June 2023). Invited talk titled *From prevention to treatment of PTSD* at the National Center for PTSD, Dissemination and Training Division, Palo Alto, CA, USA. This was part of a research visit. The Dissemination and Training Division in Palo Alto focuses on increasing use of evidence-based treatments and using digital technologies to expand access to care for PTSD. The Division conducts training and implementation science projects to promote use of effective PTSD treatments. The Division develops widely-used mobile mental health apps, conducts research on online and mobile interventions, and trains VA staff in use of digital mental health tools.

Pill, S. (2023, July 1). *Game changing strategies to better engage youth.* Festival of Sport, Memorial Drive Tennis Centre.

Pill, S. (2023, July 3). *Game-based approach to physical education curriculum and pedagogy.* Christian Brothers College, Adelaide

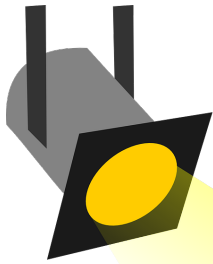
Pill, S. (2023, July 10). AFL Victoria Teacher PD, Immersive Game Day Experience at the Huddle (North Melbourne FC) – *Game Sense.*

Thomas, E.F. (2023). Recombining individual, group and societal factors to explain how collective action can (fail to) change the world. Keynote Address delivered to the International Society of Political Psychology Annual Meeting, Quebec, Montreal, July 2023.

Thomas, E.F., (2023). Protecting Democracy in polarized political contexts: the role of social norms. Roundtable panellist, International Society of Political Psychology Annual Meeting, Quebec, Montreal, July 2023.

Young, R. (2023, June 15). Presented the Keynote titled *The intersection of autism and the criminal judicial system* at the Australasian Society for Social and Affective Neuroscience (AS4SAN) in Adelaide.

Zhao, F., Woodyatt, L., Wenzel, M., & Zhao, K. (2023, July). Presented *Culture is not two-dimensional: Chinese philosophies and their influence on self-forgiveness* at the 19th Biennial Meeting of the International Society for Justice Research (ISJR), Munich, Germany.



Dr Annabelle Neall

Spotlight Series: ECR and Mid-Career Researchers

With the aim of raising awareness of the amazing early- and mid-career researchers within our College, we will be profiling and sharing the successes of a different ECR/MCR each month. It is my pleasure to introduce to you Dr Annabelle Neall!!!

Dr Ryan Balzan, ECR College Representative

When did you come to Flinders and what is your current role within the College?

I commenced my role with Flinders in May 2023, moving down from the University of Queensland. Even as an Adelaide native, I never got the chance to work with or study at Flinders, so I am thrilled to finally be part of the CEPSW team. My role is Lecturer of Mental Health and Wellbeing (Workplace and Communities) – I'm situated within Psychology and the ACSI team. Alongside A/Prof Lydia Woodyatt, I'm building the new certificate and graduate certificate in Mental Health and Wellbeing (Workplace and Communities).

Can you briefly describe the work/research journey that took you to this point in your career?

I graduated from the Bachelor of Psychology (Honours) at UniSA in 2012. After a year of working as a Research Assistant I started my PhD in 2014 (also at UniSA), exploring the boundaries and constraints of bystander intervention in the face of workplace bullying. During my PhD I was fortunate to work part-time as a tutor, course coordinator, research assistant, and project officer in the Grants office, which significantly enhanced my research and teaching skills. In 2019 I took up a role as Research Associate and several tutoring positions, before I was appointed as Lecturer of Organisational Psychology at the University of Queensland in January 2020. I really enjoyed my time at UQ, working alongside some of influential researchers and award-winning teachers. When this role came up at Flinders however, I couldn't apply fast enough! It's the perfect fit for my background and research portfolio, and I'm grateful to be back in SA.

What is your favourite part of being a postdoc and what is the hardest part of being a postdoc?

I never completed a post-doc role. I spent a year as a Research Assistant/Associate before and after my PhD, before jumping into a Lecturer (T&R balanced) role at UQ. I now realise this is a less than common pathway to academia! But at the time I enjoyed being able to combine different roles and projects tailored to my interests. Undoubtedly the worst part about this interim period was the job insecurity. Between 2009-2019, I had 89 separate contracts – constantly pulling together different streams of work and income is debilitating and is something I feel passionately about rectifying for future academics.

What is something you are most proud of?

My research has been translated in a suite of commercially licensed tools, checklists and programs designed to reduce workplace bullying and other psychosocial hazards in the workplace. This is the result of over 10 years of research with a fantastic team of female academics. Our research helps shape the work of peak health and safety regulatory bodies and Australia's largest private employers. I feel honoured that our research has a real-world impact on modifying the organisational structures to keep people safe at work.

What are your future ambitions?

I'm passionate about conducting research that has real-time and real-world translational capacity. I hope to connect with other like-minded individuals and establish new programs and initiatives to ensure the mental health and safety of everyone at work. And most importantly, I hope to be a positive and caring figure to my friends and colleagues, a loving and supportive partner and a great mum to my children.

How do you like to relax or spend your spare time?

Spare time is in limited supply these days! I'm fortunate to spend my non-working hours with my family and friends, including my adorable and energetic son Seb (16 months) and my scruffy Wolfhound X dog Umar. I enjoy baking, home organisation, board game nights with friends, beach walks and binge-watching dramedies (drama-comedies).

Flinders University Library News



Library Authentication Update...

Earlier this year, the Library transitioned its authentication system for accessing subscription resources. Our new authentication, known as OpenAthens, provides a range of benefits for all users, including:

- A single sign-on approach for all resources
- More secure, reliable, and transparent than EZproxy IP recognition; and
- An overall better user experience.

However, any links to subscription resources using our former authentication system will become invalid as of July 3rd. For links to subscription resources, these will need to move from FLO/Canvas to [Leganto](#) (the Library's reading list management system) to ensure students will have ongoing access. For more information please visit: [Logging in to library resources with OpenAthens](#). If you have any questions, please contact us at via [email](#).

Artificial Intelligence and Digital Literacy

As part of efforts to support students develop competencies in the use of artificial intelligence tools, the Library has co-delivered two workshops:

- Data and Digital Literacy Workshop, as part of the [Horizon program](#). This workshop was updated to include references to recent AI developments and tools, with time allocated to discuss student use, experiences and reflections.
- Legal research workshop, as part of LLAW1312 Essential Legal Skills. Students reflected on the accuracy and relevance of a ChatGPT response to a legal scenario, using a series of questions based on the [Using AI tools for study](#) guide.

We are also pleased to see that the 'Using AI tools for study' webpage has been selected for inclusion in [TEQSA's Higher Education Good Practice Hub on AI](#). This is an excellent repository of resources on AI in learning and teaching. To discuss use of AI tools, please contact Library's Education Engagement team via [ServiceOne](#).



**Flinders
University**

Institute for Mental Health &
wellbeing

Little Breakthrough Heroes Gala

What a night! Entertained by Magic Mike (whom I am assured only did magic!) a fabulous time was had by all at the Little Breakthrough Heroes Gala on 24 June. Raising funds for children's mental health and wellbeing, our partners The Breakthrough Mental Health Research Foundation and Little Heroes Foundation hosted a fabulous event. As a sponsor, the Institute was well represented across the night and Professor Murray Drummond gave an address highlighting our enduring partnership and the research this has facilitated into children's mental health and wellbeing. Part of our sponsorship included the production of a video in which Professor Tracey Wade gives an overview of the Institute and Professor Philip Slee and A/Prof Shane Pill talk about their anti-bullying program, Big Talks for Little People. You can watch the video [here](#).



Open Door

Coordinated by the Flinders Research Partnership team, Open Door held a facilitated workshop on 18 July exploring research themes and the expansion of the Initiative. Director, Professor Ben Wadham outlined the research that has been conducted to date and then researchers from across many Colleges and disciplines explored possible collaborations and research themes. This will be followed up later in the year with an additional workshop that will include potential partners and funders. Contact [Ben](#) if you would like to hear more about Open Door or [Kirsty](#) if you would like to explore the possibility of hosting a similar cross-disciplinary workshop.

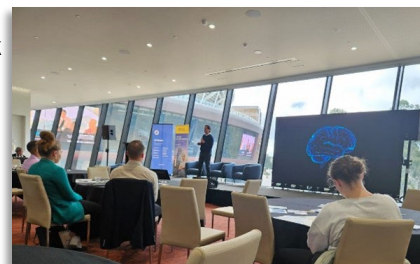


SHAPE

Sport, Health, Activity, Performance and Exercise Research Centre

Festival of Sport

SHAPE's **Associate Professor Shane Pill** and **Associate Professor Maarten Immink** delivered presentations at Sport SA's inaugural Festival of Sport, June 29 – July 1, at the Adelaide Tennis Centre. In his talk Maarten **dispelled the misconception of muscle memory** and highlighted why the idea establishes a misguided view on factors contributing to expert performance. As a solution, Maarten, contextualised performance as reflecting the adaptive nature of humans. Conceiving performance as adaptive presents new opportunities for sport including for training design and supporting athlete wellbeing. Shane presented a session on building inclusive participation strategies to better engage youth in sport. Shane discussed **"The Value of Sport for Individual and Community Health and Wellbeing"** and presented innovative ideas on reimagining youth sport and changing the game.



Healthy Development Adelaide and Women's and Children's Hospital Grant Round

Associate Professor Ivanka Prichard presented **"Body image and motherhood: Implications for practice"** at the recent Healthy Development Adelaide event. In her talk, Ivanka discussed how motherhood can be a time of increased vulnerability to body image concerns. She covered what we know about body image during pregnancy and postpartum, role modelling positive body image to children, interventions to improve body image among new mums, and how health professionals can support positive body image.

Sharing SHAPE's research internationally

In June, **Dr Jasmine Petersen** attended the International Society of Behavioral Nutrition and Physical Activity (ISBNPA) conference in Uppsala, Sweden. Jasmine presented on research exploring the promotion of mental health in Australian sporting clubs.

Save the date for NYSC2023

The Inaugural National Youth Sport Conference 2023 (16-17 November) is shaping up to be a fantastic event. With abstract submissions now closed, the Scientific Committee are working to put together an inspiring program. Save the date!

[Registrations](#) are open. Keep your eye on the NYSC2023 socials ([@NYSCConf2023](#)) for future important announcements.

Little Heroes Foundation & Breakthrough Mental Health Foundation Gala

Professor Murray Drummond, **Associate Professor Sam Elliott** and **Professor Raj Shekhawat** attended the **Little Heroes Foundation** and **Breakthrough Mental Health Research Foundation** Gala Dinner this month.

SHAPE researchers have developed a strong partnership with the Breakthrough Mental Health Research Foundation, jointly conducting and supporting research to improve youth mental health in sport.



Beyond the Club PODCAST



The latest episodes of SHAPE's Beyond the Club Podcast feature two of our PhD students:

- Episode 26: [Megatrends in Sport](#)
- Episode: [81 determinants of fun in youth sport: Part 8](#)

Social Work Innovation Research Living Space



Spotlights

Yarning Circles



Kimberley Wanganeen and Luke Cantley have been carrying out interviews and yarning circles to hear how safety and wellbeing is defined. Both met with eight Aboriginal families who are providing care as Kinship carers, eleven practitioners from DCP as well as four service providers who are supporting community to stay safe and well. Analysis of the data is about to commence.

Secondment to AFSS

Luke Cantley has recently completed a 12 month secondment with the Aboriginal Family Support Service. During this time, Luke assisted in the implementation of a culturally adapted assessment tool. The aim of the assessment tool is to assess areas of need for Aboriginal families who have had contact with the child protection system, inform goal setting and attempt to minimise overall risk levels experienced by the family. During this time, Luke was receiving completed assessment tools and entering data into a database allowing Luke to identify trends from service interventions. Luke also conducted qualitative interviews with AFSS staff members (12) to discuss the assessment process and hear about the impact the assessment tool is having.



Community and Professional Services

Federal Submission

Professor Debra Bateman contributed her knowledge and understandings in a submission for the report 'The Social Contribution of Independent Schools in Australia' commissioned by Independent Schools Australia to unpack the social contribution of independent schools.

Conference Presentations

Dr Ben Lohmeyer presented on "Youth Work, School Bullying and 'Public Executions' – Preparing Young People to Accept Authoritarianism" and "Examining 'Soft' Authoritarianism in Third Sector Organisations in the Context of Youth Mentoring within Neoliberal Outsourcing of Government Services" at the International Sociological Association World Congress of Sociology (June 25-July 1, 2023) in Melbourne. Ben also presented on "Jesus, the bible & 'I feel like I should be left leaning': Investigating the liberalising effect of sociology in Australian non-university faith-based higher education" at the Society for the Study of Christian Spirituality Conference, Tabor, Adelaide.

In the Media

Professor Sarah Wendt spoke to The Post about coercive control and how coercive controlling behaviour can be subtle and hard to interpret unless you understand it.



& Professional Services

- Dr Carol Aldous was elected the Australia Pacific Regional Representative on the International Council of Associations for Science Education (ICASE).
- On 26th June 2023 Eva Kemps spoke about the psychology of eating duckweed to a visiting delegation from the NASA Mars Exploration Program and the Australian Space Agency as part of a showcase of space research topics from the ARC Centre of Excellence Plants for Space (P4S) held at the University of Adelaide.

ARC Mid-Career Industry Fellowships

The **ARC Mid-Career Industry Fellowship** scheme for funding in 2024 (IM24) will be opening on **Wednesday 5th July**. If you are intending to apply to this scheme, please **register your intent** by reply email to ARC@flinders.edu.au (cc'ing cepsw.research@flinders.edu.au), **no later than Friday 30th June**. This will assist with targeted support and allows us to provide relevant information for the new round as it becomes available.

The round is for Mid-Career researchers who have 5-15 years of relevant experience. Applications much include at least one Key Industry Partner.

The Mid-Career Industry Fellowship scheme aims to:

- strengthen the industry collaboration skills of mid-career researchers
- encourage uptake of a wider range of career options for established researchers
- supervise and develop future research and nurture their development of collaboration, commercialisation and translation skills; and
- deliver significant, actionable outcomes for industry partners and end-users.

The successful applicant will receive:

- a contribution to salary and salary related oncosts of \$199,824* per year for 2–4 consecutive years on a full-time basis
- project costs not exceeding \$290,000* may be requested over the duration of the grant

*Note these figures are from IM23, and may be adjusted by the ARC for IM24

Applications open in RMS Wednesday, 5 July, and close Wednesday 16th August 2023.

Finance and Procurement Services

Research Finance

Research Development and Support and Flinders Finance and Procurement Services offered the '**Research Finance-principles, systems and dashboards**' presentation which focused on:

- Overview of the structure and services
- Overview of researchers' financial responsibilities
- Detailed presentation on Financial Reports
- Detailed presentation of Finance Dashboards

A recording is available on the [RDS Training Sessions](#) site.

There are future presentation dates available, as follows:

- 27 July, 10.30am-11.30am
- 10th October, 10.30am-11.30am

The information session is an interactive Teams webinar. Enrolments via [enrol](#).



Assisting Grants Finance: Provide account details

The Grants Finance team has noted that one simple thing researchers could do that would assist them in responding to queries in a timely manner is to include the relevant account number in both the subject line and body of an email.



Higher Degree by Research

CEPSW HDR UNSUPERVISED EVENTS



Theme: Q&A with Peers on Mid-Candidature

Date: 3rd August 2023

Time: 3pm until 5pm

Location: Multimedia Room, The Hub, Level 1 – then the Tavern

Please join us for our catch up and discussion on the upcoming Q&A with Peers on Mid- Candidature review- for HDR students, new and old. This is an opportunity to ask any questions you may have about the mid-candidature review in a no judgement, friendly environment. This is the seventh of our First Thursday each Month engagements with CEPSW HDR students, planned for 2023.

The schedule for 2023 is available [here](#) via FLO. Please keep a look out for our meeting requests, which will be sent in due course. We also expect additional activity may be added during the year.

Who will be there?

CEPSW HDR Students and HDR Student Committee members.

CEPSW HDR Coordinator

Associate Professor Helen McLaren, College of Education, Psychology and Social Work
Telephone: Office +61 8 8201 3025 | <http://www.flinders.edu.au/people/helen.mclaren>

CEPSW HDR Contacts

A reminder that if you have any concerns or questions that you might not feel comfortable asking your supervisor, please get in touch with any of the committee members and we will help you as best we can or point you in the right direction.

Student Committee: epsw-hdr-sc@FLINDERS.onmicrosoft.com

Education: catherine.litchfield@flinders.edu.au; glen.fernandes@flinders.edu.au

Psychology: georgina.maddox@flinders.edu.au (Chair); lucy.bird@flinders.edu.au; sam.antoniades@flinders.edu.au; david.nicoll@flinders.edu.au

Social Work: tess.cunningham@flinders.edu.au

Link to CEPSW HDR FLO page: <https://flo.flinders.edu.au/course/view.php?id=56481>

Twitter: <https://twitter.com/EPSWHDR>

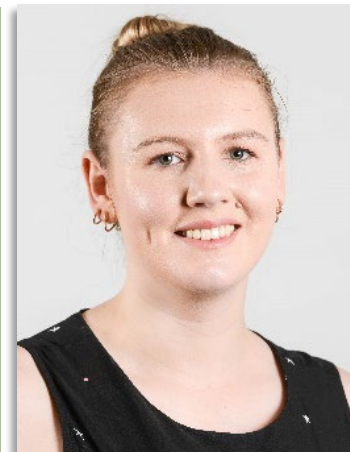
HDR Completions

Congratulations to Rosalie Miller for completing her thesis titled *Reflective encounters between primary pre-service teachers and a mathematics teacher educator to explore critical mathematics teaching approaches*. Supervisors: Associate Professor Julie Clark and Emeritus Professor Kay Whitehead.

HDR Spotlight

This month we'll hear from one of our PhD student on their HDR journey so far: Catherine Litchfield, PhD Candidate in Education.

HDR Spotlight on Catherine Litchfield



What's the overview of your PhD?

My PhD explores social support and injury recovery in women's Australian football. Specifically, I look at the current social support environments within three Australian football clubs across local, state-league and elite level competitions and the social support experiences of injured female footballers who play in them. This is a meaningful study for me as someone who has undergone three knee reconstructions as a result of sport participation and experienced some great, and some not-so-great support while recovering.

What is something that you have enjoyed during your PhD?

I really enjoy being able to share my research with others. I have been lucky enough to present at the inaugural Women in Sport Congress in Melbourne last year and was invited to speak at the SASMA Sports Medicine Conference earlier this year. It's always great seeing how much my research, which I always felt was a bit of a niche area, resonates with other people.

What has been the biggest challenge?

Time management has always been my downfall. I have discovered that I am really bad with the word "No", which has led me to some amazing experiences, but has also left me very overworked and stressed. With submission 7 weeks away, every second counts!

What advice do you have for someone starting their PhD?

Find a support network. I could not have gotten this far without the help of fellow HDRs that I have met along the way. Attending unsupervised events, conferences and Inspire sessions, as well as joining the student committee has allowed me to grow my support network so whenever I'm having a rough time, I know I have people to turn to for help. I cannot emphasise enough how important it has been for my wellbeing to have people with similar experiences to vent to!

HDR 2023 Program of Events

Date	What's on	Who's there	Where? <i>Subject to change, check your emails</i>	Unsupervised?
3 rd Aug	Q&A on Mid-Candidature Review	HDR Students	Media Room in the Hub 3-4pm, then Tavern	
7 th Sept	Q&A on presenting at Conferences	Seasoned Academics, HDR Coordinator & HDR Students	Media Room in the Hub 3-4pm, then Tavern	
5 th Oct	Q&A on Final Thesis submission	HDR students	Media Room in the Hub 3-4pm, then Tavern	
2 nd Nov	Annual HDR Student Conference	Academics, HDR Coordinator, HDR Students	Venue TBA All day event	
7 th Dec	HDR & FiMWELL joint X-mas catch up	Members of FiMWELL & HDR Students	Media Room in the Hub 3-4pm, then Tavern	

Research⁷ Link

for funding searches



[Media Training for Researchers with the Australian Science Media Centre](#)

Led by Dr Joseph Milton, Senior Media Officer at Australian Science Media Centre (AusSMC), this session will enable researchers to understand the media, how it works, what it wants and how to increase media interest in – and coverage of - your research. Dr Milton will be joined by Karen Ashford, Director of Media and Communications, other journalists and Flinders researchers (Professor Corey Bradshaw and Dr Romain Fathi) who will give their own perspectives on why and how researchers should engage with the media. Researchers from all disciplines – not just those in science – will benefit from this session.

- Friday 21st June, 10am-12.30pm, web conference
- Thursday 30th November, 10am – 12.30pm, web conference

Mind, Body and Cognition Research Section Events

Led by Research Section Head: Associate Professor Tim Windsor



Writing Retreat | Friday 15 September | Room 5.29 at Tonsley

Most of us who attended the writing day that was held late last year found it to be an enjoyable and productive change from the usual routine. So please save the date and join us if you can- more details to follow closer to the day. The email list for the research section only captures permanent staff, so if you have a postdoc(s) or contracted colleague who you would like to invite, please feel free to pass this on.

Work in Progress

Research can be a big job. That's why sometimes it helps to down tools and discuss **Work in Progress**. Whether it's an idea for a new project you want to bounce around, a roadblock with a manuscript, a statistical conundrum, or just your personal reflections on the beauty of science, **every second Friday from 11am to 12pm, from August 4 to December 8**, Tim be available in the **Social Sciences North Common Room** (or via Teams), for talking research. Tim says: "I'm not saying there will be cake, but I'm also not saying there won't be cake." For **appointments**, please email [Liz Traeger](mailto:Liz.Traeger).