

# Research News

## Dean of Research

Dear all,

I hope this message finds you well as we bask in the warm embrace of the approaching summer. With longer days and brighter skies, it's the perfect time to share some fantastic news and updates from our vibrant research landscape:

*Celebrating Achievements* - Let's start with a round of applause for Ben Lohmeyer and Ryan Balzan, who have been successful in winning DVC-R travel support for 2023. I am thrilled to announce that Professor Sarah Wendt has embarked on an exciting journey as she establishes and leads the South Australia's Social Worker Registration Scheme—the first of its kind in the country. She will retain 0.2 FTE.

*Research Excellence Framework and New Horizons* - A heartfelt thank you to all who provided valuable feedback and contributed to the co-design of our Research Excellence Framework. I'm diligently working through your input, and I'm excited to share that this will pave the way for new research leadership roles within our college. Stay tuned for a more strategic and collaborative future.

*Exploring Mental Health Care Gaps and Education Research Priorities* - I recently had the privilege of attending a workshop hosted by the Breakthrough Mental Health Foundation and the Department of Education. We delved into understanding the gaps in mental health care and crafting education research priorities for South Australia. These conversations are ongoing, and it's a dynamic space to watch as we strive to make a positive impact on mental health and education future.

*A Shoutout to Associate Professor Natalie Betts* - Many of you have had the pleasure of meeting Associate Professor Natalie Betts, who has been instrumental in supporting your Cat 1 grants. Keep up the excellent work, and let's continue to reach for the stars together!

*R U OK Day* - As we recently observed R U OK Day, let's remember that supporting one another goes beyond a single day of awareness. Keep those heartfelt conversations going with friends, family, and colleagues. Listening and caring are the keys to our collective well-being.

As we look ahead to the sun-filled days of summer, let's celebrate our collective achievements and keep the spirit of collaboration and support alive in our research community. Thank you all for your dedication and contributions.

Best wishes  
Raj

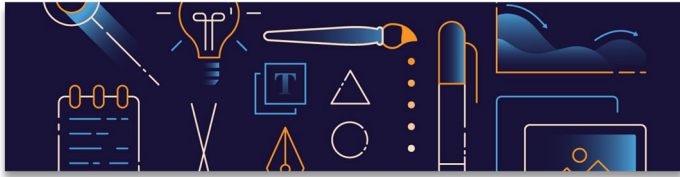


## RESEARCH PUBLICATIONS



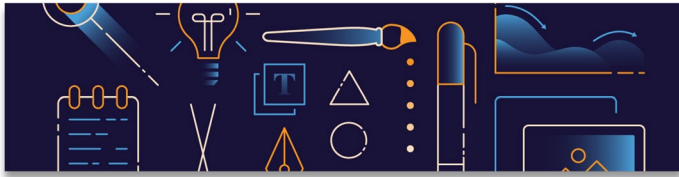
### Refereed Journal Articles

- Brevers, D., King, D. L., & Billieux, J. (2023). Perspectives on adaptive and maladaptive involvement into esports. *Addictive Behaviors*, *144*, 107716.
- Deek, M.R., Prichard, I., & Kempes, E. (2023). The Mother-Daughter-Sister Triad: The role of female family members in predicting body image and eating behaviour in young women. *Body Image*. Doi: 10.1016/j.bodyim.2023.07.001
- Delfabbro, P. H., King, D. L., & Parke, J. (2023). The complex nature of human operant gambling behaviour involving slot games: Structural characteristics, verbal rules, and motivation. *Addictive Behaviors*, *137*, 107540.
- Dunk-West, P., Riggs, D.W., Vu, K., & Rosenberg, S. (2023). Built pedagogy and educational citizenship in an Australian alternative learning environment. *Wellbeing, Space and Society*. Doi: 10.1016/j.wss.2023.100159
- Flayelle, M., Brevers, D., King, D. L., Maurage, P., Perales, J. C., & Billieux, J. (2023). A classification of technology design features promoting addictive online behaviors. *Nature Reviews Psychology*, *2*, 136-150.
- Frimpong-Manso, K., Cudjoe, E., Agbadi, P., Abdullah, A., Deliege, A., & Bansal, A. (2023). Deinstitutionalisation of children in residential care facilities: Experiences and perceptions of professionals in Ghana. *Child & Family Social Work*, *1-10*. Doi: 10.1111/cfs.13081
- Giardina, A., Starcevic, V., Di Blasi, M., Schimmenti, A., King, D. L., & Billieux, J. (2023). Research directions in the study of gaming-related escapism: A commentary to Melodia, Canale & Griffiths (2020). *International Journal of Mental Health and Addiction*, *21*, 1075-1081.
- Hing, N., Russell, A. M. T., King, D. L., Rockloff, M., Browne, M., Newall, P., & Greer, N. (2023). Not all games are created equal: Adolescents who play and spend money on simulated gambling games show greater risk of gaming disorder. *Addictive Behaviors*, *137*, 107525.
- Kim, H. S., Leslie, R. D., Stewart, S., King, D. L., Demetrovics, Z., ... & Hodgins, D. (2023). A scoping review of the association between loot boxes, esports, skin betting, and token wagering with gambling and video gaming behaviors. *Journal of Behavioral Addictions*, *12*, 309-351.
- Kingham, A., Kempes, E., Prichard, I., & Tiggemann, M. (2023). The effect of spatial separation on food and drink choices from an online menu. *Eating Behaviors*. Doi: 10.1016/j.eatbeh.2023.101816
- Kowalik, B., Delfabbro, P. H., & King, D. L. (2023). Impaired Control over Gaming Scale (ICOGS): Development, confirmatory factor validation, and psychometric evaluation. *Addictive Behavior Reports*, *17*, 100489.
- Müller, S. M., Antons, S., Wegmann, E., Ioannidis, K., King, D. L., Potenza, M. N., Chamberlain, S. R., Brand, M. (2023). A systematic review and meta-analysis of risky decision making in specific domains of problematic use of the Internet: Evidence across different decision-making tasks. *Neuroscience and Biobehavioral Reviews*, *152*, 105271.
- Pill, S., Petersen, J., Agnew, D., Prichard, I., & Ridley, K. (2023). Barriers, supports and constraints on women coaching in tennis. *International Journal of Sports Science & Coaching*. Doi: 10.1177/17479541231191596
- Sigre-Leirós, V., Billieux, J., Mohr, C., Maurage, P., King, D. L., Schimmenti, A., & Flayelle, M. (2023). Binge-watching in times of COVID-19: A longitudinal examination of changes in affect and TV series consumption patterns during lockdown. *Psychology of Popular Media*, *12*, 173-185.
- Skrzypiec, G., Wyra, M., & Lawson, M.J. (2023). The confounding and problematic nexus of defined and perceived bullying. *Children and Youth Services Review*. Doi: 10.1016/j.childyouth.2023.107175.
- Starcevic, V., Eslick, G., Viswasam, K., Gainsbury, S. M., King, D. L., & Berle, D. (2023). Problematic online behaviors and psychopathology in Australia. *Psychiatry Research*, *327*, 115405.



# Presentations

- Anderberg, I. (PhD Candidate, Clinical Psychology), Prichard, I., & Kemp, E. (2023, August). Poster presentation *Associations with body image, disordered eating and compulsive exercise in young women* as the Australia and New Zealand Academy for Eating Disorders (ANZAED) 21<sup>st</sup> Annual Conference, Gold Coast.
- Bastian, C. (2023, September). Presentation on the wellbeing of children in the context of women's shelters at the Healthy Development Adelaide (HDA), in conjunction with the Department for Child Protection, forum on Starting early for children in need – where we start matters.
- Lisa Beatty chaired a symposium titled *Stop reinventing the wheel! Adapting evidence-based digital interventions to different settings & populations: lessons from the Finding My Way program of research* at the International Psycho-Oncology Society World Congress, Sept 1-3 2023, Milan, Italy. Lisa also presented *Finding my way-advanced: Co-designing and evaluating an adapted intervention for women with metastatic breast cancer*, co-authored with Emma Kemp, Amy Rigg, Phyllis Butow, Afaf Girgis, Nicholas Hulbert-Williams, Billingsley Kaambwa, Penelope Schofield, Jane Turner, Robyn Combes, & Bogda Kozwara.
- Beos, N., Kemp, E., & Prichard, I. (2023, August). *A systematic review of the relationships between social media, body image, physical activity, and anabolic-Androgenic steroid use in men*. 21<sup>st</sup> Annual ANZAED Conference, Gold Coast, Australia.
- Bissaker, K., & Le Lant, C. (2023, September). Presentation on outcomes of the development and trialling of an Inclusive Schools Self-Assessment Checklist (ISSAC) at the Australian Association of Special Education's National Conference. The research project was conducted in collaboration with Jane Jarvis and Julie McMillan.
- Calabro, R., Kemp, E., Prichard, I., & Tiggemann, M. (2023, September). *Healthy vending machines on campus: The effect of traffic light labelling on choice*. 37<sup>th</sup> Conference of the European Health Psychology Society, Bremen, Germany.
- Deek, M., Prichard, I., & Kemp, E. (2023, September). *When East Meets West: Body image and eating behaviour concerns in young Middle-Eastern women*. 37<sup>th</sup> Conference of the European Health Psychology Society, Bremen, Germany.
- Granfield, P., Prichard, I., & Kemp, E. (2023, August). *Evaluating the impact of a functionality-based writing intervention on the body image of mothers of young children*. 21<sup>st</sup> Annual ANZAED Conference, Gold Coast, Australia.
- Kay, E., Kemp, E., Prichard, I., & Tiggemann, M. (2023, September). *Visual cues and primes for nudging consumption-related behaviours: A meta-analysis and systematic review*. 37<sup>th</sup> Conference of the European Health Psychology Society, Bremen, Germany.
- Kemp, E., Kingham, A., Prichard, I., & Tiggemann, M. (2023, September). *Spatial separation promotes healthier food and drink choices from online fast-food menus*. 37<sup>th</sup> Conference of the European Health Psychology Society, Bremen, Germany.
- King, D. L. (2023, September). Problem gaming and gaming disorder: State of the game. Presentation for the Inaugural Symposium of Australian Gaming and Screens Alliance (AGASA) at Parliament House, Canberra.
- King, D. L. (2023, August). Treatment for gaming disorder: An overview of the evidence. ICBA - Treatment. Paper presented at the 8<sup>th</sup> International Conference on Behavioral Addictions, Incheon, Seoul, South Korea.
- King, D. L. & Paterson, S. (2023, August). Psychoeducation on developmental needs to inform parents of adolescent gamers. Paper presented at the 8<sup>th</sup> International Conference on Behavioral Addictions, Incheon, Seoul, South Korea.
- Kulbida, M., Kemp, E., Williamson, P., & Tiggemann, M. (2023, September). *Delay discounting mediates the effect of trait impulsivity on soft drink consumption*. 37<sup>th</sup> Conference of the European Health Psychology Society, Bremen, Germany.
- Neall, A. (2023, September). Presented *A novel taxonomy of work integrated learning opportunities for psychology undergraduate students and Work-integrated learning in undergraduate curricula: Where are we and where we go?* At the 2023 Australian Psychology Learning and Teaching Conference in Hobart, Tasmania.
- Pearce, R., Pfeffer, C. A., Riggs, D. W., Hines, S., & White, F. R. (2023). Understanding and preventing domestic violence against trans people: Insights from a study with trans birth parents. Annual Meeting of the American Sociological Association, Philadelphia, Pennsylvania. 17-21 August.
- Pellizzer, M. L., & Wade, T. D. (August, 2023). Developing a definition of body neutrality and strategies for an intervention. Oral presentation at the Australian and New Zealand Academy for Eating Disorders Conference, Surfers Paradise Australia.
- Pellizzer, M. L., Robinson, K., & Wade, T. D. (August, 2023). Endo belly: Endometriosis, disordered eating and body image. Oral presentation at the Australian and New Zealand Academy for Eating Disorders Conference, Surfers Paradise Australia.
- Pill, S. (2023, September). Presentation: *Play With Purpose implementation in primary and secondary school curriculums*, at the Independent Primary School Heads Association PDHPE teachers Conference, at St Andrew's Cathedral School, Sydney



# Presentations

- Pill, S. (2023, September). Presentation: *Coach Developer work in youth sport in Australia* at University of Gothenburg for the STEPS - Advancing Sustainable Youth Performance Sport: an interdisciplinary research collaboration network Conference: Sustainable Youth Performance Sport
- Pryde, S., Prichard, I., & Kemp, E. (2023, August). 'You start working out to get a flat stomach and a big booty'. *A content analysis of fitness Tik Tok videos*. 21<sup>st</sup> Annual ANZAED Conference, Gold Coast, Australia.
- Wilksch, S. (2023, August). Presentation titled *A national survey to inform a more comprehensive understanding and support of parents with a child experiencing an eating disorder* at the Australia and New Zealand Academy for Eating Disorders (ANZAED) 21<sup>st</sup> Annual Conference, Gold Coast.
- Woodyatt, L. (September, 2023). *Is AI your new teammate?* AusPLAT (Australian Psychology Learning and Teaching) Biennial Conference, Hobart, Tasmania.
- Wu, Y., Kemp, E., & Prichard, I. (2023, September). *Exposure to eating-related content on social media, body image and eating behaviours: A systematic review*. 37<sup>th</sup> Conference of the European Health Psychology Society, Bremen, Germany.
- Wu, Y., Kemp, E., & Prichard, I. (2023, August). *The effect of exposure to eating-related social media content on body image and eating behaviours: A systematic review*. 21<sup>st</sup> Annual ANZAED Conference, Gold Coast, Australia.



## Research Performance Success Initiative

As a part of our **Enhance Research Reputation** initiative, we are increasing awareness of **Authorship of Research affiliations**, or publication by-lining, within our research community.

The [Authorship of Research Output Procedure](#) was updated in 2022. Accurate affiliation is a critical element to maintaining our highly regarded research reputation. This updated procedure provides:

- Guidance on how authors should record their Flinders University affiliation on research outputs.
- Simplified and easier steps to follow to correctly affiliate to Flinders University.
- Requirements to ensure compliance with our [Research Integrity Policy](#) and the [Australian Code for the Responsible Conduct of Research](#).

The [Authorship of Research Fact Sheet](#) provides more details on the benefits and importance of correctly by-lining in research outputs.

If you have any questions, please reach out to your '**Change Champion**': Professor Emma Thomas, Associate Professor Shane Pill or Associate Professor Tim Windsor. They'll be more than happy to provide further clarification. Alternatively, you can also send an email to: [ResearchEngagementSuccess@flinders.edu.au](mailto:ResearchEngagementSuccess@flinders.edu.au).



**20 September 2023.** 5AA. Interview with John Mannion, CEO of Breakthrough Mental Health Foundation and Professor Tracey Wade on the mental health issue of eating disorders with at least 1 million children and adults living with the disease, and the two danger periods of adolescence and going into young adulthood.

**17 September 2023.** The House of Wellness. *Yes, younger people can get dementia. But it's often missed*, featuring Dr Monica Cation's comments that one of the most important things for people dealing with the condition is to pick the diagnosis early.

**8 September 2023.** The Guardian; TopologyPro One; TittlePress; *Fast access to hormone therapy in transgender adults 'lifesaving', study finds*, featuring comments by Professor Damien Riggs that Associate Professor Ada Cheung's study affirms with quality evidence what has long been known. Damien said: Trans people are typically aware of their desire to access medical treatment for a considerable period of time before presenting to services and receiving care. Importantly, the researchers followed informed consent protocols. This study demonstrates that a harm-minimisation approach to trans healthcare is best served through the timely receipt of medical treatment following informed consent.

**8 September 2023.** Radio 6PR. Interview with Associate Professor David Curtis re the apparent achievement gains to boys and girls in single-sex-schools as reported in the SMH. This claim is not supported by David's research.

**27 August 2023.** Asia Pacific Defence Reporter; Xinhua News Agency; China.org.cn; . *Study: The real costs of serving for your country*, featuring comments by Professor Ben Wadham on the report Mapping Service and Transition to Self-Harm and Suicidality's 18 recommendations to the Royal Commission into Defence and Veteran Suicide and how to better protect ex-service members from self-harm.

**23 August 2023.** Irish Independent. *Women's World Cup showed how a person's sexuality didn't need to be a talking point*, featuring comments by Professor Murray Drummond describing the visibility of gay players at the women's World Cup as highlighting "the significant issues that we have in men's sports" and the struggle "to come to terms with different forms of masculinity among men".

**21 August 2023.** ABC Listen, with Associate Professor Tim Windsor as co-guest on the subject of the growing body of evidence that our personalities shift as we reach our 60s and again at the end of our lives, and how to navigate these changes to thrive in later life.

**10 August 2023.** 5AA. Professor Reg Nixon was invited to participate in an interview about mental health in first responders with some discussion of the Movember-funded project *Protecting Emergency Responders with Evidence-Based Interventions (PEREI)*. Other panel members included John Mannion from Breakthrough Mental Health and Kim-Sherie Summers, South Australian Police's Executive Director of People, Culture and Wellbeing.



## & Professional Services

- Lisa Beatty was featured on Episode 3 of the [Podcast](#) by The Oncology Network: Supportive Care Matters, How to create successful collaborations in international research projects.
- Pill, S., Suesee, B., and Ellis, Y. Final Report: Association of Independent Schools NSW PDHPE project
- Pill, S., 20 September, SA DfE Research Agenda Workshop, U City, 43 Franklin Street, Adelaide
- Lydia Woodyatt recorded a presentation on psychological needs as the basis for understanding the motivation and wellbeing of customers and staff, for Westpac Banking Group, which now sits located on the company intranet for staff development and has been used in staff training, especially for supporting customers going through financial hardship.






**Flinders  
University**

Institute for Mental Health &  
**wellbeing**

**Introducing a new research pillar 'Improving social wellbeing of the community'**

We are excited to expand the reach of our research to include a new research pillar 'Improving social wellbeing of the community'. This pillar will bring in new members from across social psychology and social work (including SWIRLS) and provides important benefit to the Institute in terms of broadening our perspective on wellbeing. [Contact us](#) if you would like to know more about our new research pillar or would like information on becoming an Institute member.

<p><b>Blackbird</b> Initiative</p>  <p>Effective research to combat disordered eating</p> <p style="background-color: white; color: black; padding: 2px 5px; display: inline-block;">Learn more &gt;</p>	<p><b>Open Door</b> Initiative</p>  <p>Understanding and supporting service personnel and their families</p> <p style="background-color: white; color: black; padding: 2px 5px; display: inline-block;">Learn more &gt;</p>	<p><b>Generations</b> Initiative</p>  <p>Research to promote late-life health and wellbeing</p> <p style="background-color: white; color: black; padding: 2px 5px; display: inline-block;">Learn more &gt;</p>
---	--	---

**Website updates**

Our website is currently undergoing a major upgrade as we add a focus on the impact of our research in the community. These stories highlight the real-world impact of our research and life-changing effect it can have on people's lives. These pages will be going live over the coming weeks. We have also updated the look and feel of our Research Initiative webpages. Have a look at the new pages for [Generations](#), [Open Door](#) and [Blackbird](#) will be coming soon.

# Colloquium

**Mind, Body & Cognition Colloquium Series, S2, 2023**  
North Theatre 4, 12-1pm

Date	Name
October 5	<b>Cassandra Rose</b> <i>Integrated treatment of post-traumatic stress and sleep disturbance in primary school aged children: A feasibility and efficacy study</i> <b>Siying Li</b> <i>Decoding Self-Compassion: Analysis reveals little incremental value and probable detrimental effects</i>
October 12	Psychology discipline meeting
October 19	<b>Dr Toshi Hamamura</b>
October 26	<b>Xi Huang</b> <b>Sarah Lewitzka</b> <b>Isabelle Slattery</b> <i>Secondary traumatisation and symptom transmission: How we experience secondarily traumatic events</i>
November 2	<b>Lucretia Mallard</b> <b>Leah Burleigh</b> <b>Molly Kernahan</b>
November 9	Psychology discipline meeting

# SHAPE

## Sport, Health, Activity, Performance and Exercise Research Centre

### Register now for NYSC2023



The SHAPE team behind the inaugural National Youth Sport Conference (16-17 November 2023) are busy building out a program of academic and social events. Registrations are now open until 2<sup>nd</sup> November. Register now and be inspired by two days of keynote presentations, concurrent sessions, digital scientific posters and rapid communications. Secure your place at the NYSC [today](#) and book your tickets to the [social events](#)! Keep your eye on the NYSC2023 socials ([@NYSCConf2023](#)) for future important announcements.

### Invited Presentations

**Associate Professor Sam Elliott** was invited to present at the 2023 Sports Marketing Summit (Royal Randwick, Sydney). Drawing on his latest research, Sam presented a paper entitled "Why sports marketers should help rebuild community sport" to an audience of 250 delegates.



**Associate Professor Shane Pill** presented "Play With Purpose implementation in primary and secondary school curriculums" on the 12th of September at the Independent Primary School Heads Association PDHPE teachers Conference, at St Andrew's Cathedral School, Sydney.

**Emilea Mysko** was asked to speak at the Flinders University R U OK Day 2023 morning tea. Emilea bravely shared her personal experiences and time in the Australian Navy to the large audience of staff and students at the morning tea. She explained her perceptions of the importance of having honest conversations, listening to others and really hearing them, and continuing to check-in. Emilea hopes that through telling her story she has helped others to speak, listen, hear and support each other.



### HDR News

**Hassan Ali** presented his confirmation of candidature presentation on September 4, 2023. His PhD project is entitled, 'Predicting human performance in manufacturing: Investigating performance automaticity and human errors within assembly tasks.' Hassan's supervisory team is A/Prof Maarten Immink and Dr Valerie O'Keeffe.



"My PhD project will provide a novel solution to a persistent industry problem: human error in manufacturing."



### Beyond the Club PODCAST



The Beyond the Club podcast, hosted by Associate Professor Sam Elliott and sports writer and reporter Ben Hook, reached a significant milestone this month, hitting **5,000 streams!**

- Episode 29: **Concussion in Sports**  
<https://open.spotify.com/episode/3J9Qxu7nx9UxYez5i1Wbbd?si=15b952dc25d848a1>
- Episode: **81 Determinants of fun in youth sport: Part 10**  
<http://open.spotify.com/episode/3eijUqtIRUppcRMwwBANoq?si=5190c82ecf0e49a3>



### Department of Veteran Affairs Consult

Professor Ben Wadham was invited by the Department of Veteran Affairs to provide industry expertise at a consultation event to explore a change to DVA engagement model for its portfolio of research, evaluation and external data-analysis projects. The DVA is looking to develop longer-term partnerships with a network of providers. The event was held in-person on Tuesday 19<sup>th</sup> September in Canberra, and was attended by Ben and Dr Melissa Gregory, Research Development Manager.

### Publications

Waddell, E., Rioseco, P., Van Hooff, M., Daraganova, G., Lawrence, D., Rikkers, W., Roberts, L., Beks, T., Sharp, T., Wadham, B., & Lawn, S. (2023). Families' experiences of supporting Australian veterans to seek help for a mental health problem: A linked data analysis of national surveys with families and veterans. *Journal of Mental Health*, 32(5), 899-909. Doi: 10.1080/09638237.2023.182418



**Politics Home:** [The House](#) (11 September 2023) published *Further endorsement for Veterans Aid wellbeing model* which featured comments by Professor Ben Wadham about the recently published paper *Open Door: Understanding and supporting service personnel and their families* for the Royal Commission into Defence and Veteran Suicide. This report endorses the UK Charity Veterans' Aid Welfare to Wellbeing methodology.

Ben said: "*The Mapping Service and Transition to Self-Harm and Suicidality* report has demonstrated that veteran suicide is multifactorial and not simply the result of deployment trauma. Veteran trauma can also be a result of military and unit cultures, the disposition of command and the systems that govern the veteran including military justice, health systems and the claims processes of the Department of Veterans Affairs. "The methodology behind this approach is informed by a welfare to wellbeing model inspired by (the charity) [Veterans Aid](#) in the United Kingdom. This approach moves beyond the 'broken soldier' approach to recognise the skills and experience that veterans develop and carry into civilian life if they leave the services. This recognition of what the Open Door veteran wellbeing research initiative at Flinders University calls the 'sovereign asset' demonstrates that a strengths-based approach to research and services is contributing to a shift in the way we understand and support veterans and their families."

CEO of Veterans Aid Dr Hugh Milroy, who introduced the concept in 2009 and has used it to underpin the charity's work ever since, said: "The acceptance of movement from traditional 'welfare' to holistic 'wellbeing' represents a paradigm shift in approach to veteran care and it is something that has universal application. In my role of Head of Wellbeing at the World Veterans Federation (WVF) I oversee this on a global stage, and it is gaining traction in areas where traditional 'welfare' and/or philanthropy has failed to deliver enduring solutions to adversity."



# Social Work Innovation Research Living Space



## Spotlights

### Child Protection Awards



On Friday 8th September, SWIRLS Members and CEPSW Dean Education Pablo Munguia attended the 2023 Child Protection Awards at Adelaide Oval. The awards celebrate the outstanding achievements of children and young people, carers, volunteers, staff and organisations from across the child protection sector.

### Indigenous Workforce Strategy

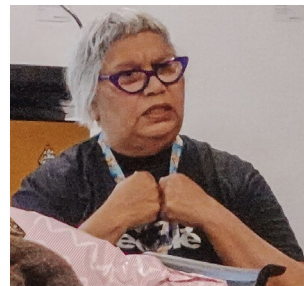
SWIRLS member, Luke Cantley, recently engaged with Physical Sciences and CELT discussing key initiatives and explored ways of implementing- and then to increase - the Indigenous workforce strategy. Luke stressed the importance of cultural awareness, truth-telling, and the creation of tailored opportunities within the college and university. Methods to facilitate the entry of Aboriginal individuals into positions were explored, taking into account location and cultural commitments, as well as ways to effectively advertise and target Aboriginal individuals for these positions whilst recognising the need to carefully and purposefully foster opportunities for those who express an interest in the work. Luke highlighted the importance of recognising the stretched nature of the Aboriginal workforce. It requires connecting with and guiding individuals through processes such as applying for scholarships. There is a need to identify and create more culturally appropriate pathways and opportunities, eg. summer internships, accessing paid programs and opportunities for exposure to academia. Whatever the approach, it needs to be committed and holistic. It is essential not to isolate Aboriginal individuals when employed, as it may not be culturally safe. Collaboration and integration within the team is crucial. Luke has been invited to return for future discussions. These conversations signify Luke's knowledge and expertise, and we look forward to further progress in this area.

## Community and Professional Services

### National Workforce Survey for Child, Parent, and Family Mental Health

You are invited to take this [20 minute survey](#) and help shape child mental health planning and policy. This is an opportunity to help build a picture that will help ensure future workforce development strategies meet the needs of workers and will contribute to policy advice to help shape a forthcoming children's mental health policy.

## HDR News



The recent Confirmation of Candidature for Sharon Maegher was heartwarming and insightful as she highlighted the vital role of Aboriginal Health Workers in the child protection arena, drawing inspiration from the moving lyrics of Archie Roach, who encapsulates the profound impact of his own experiences in song. Sharon's thesis titled *Aboriginal Health Workers and Child Protection* left a lasting impression on attendees. Just as Archie Roach sings his life's story, Sharon's research reminds us to sign loud, proud, and for a long time, as we honour and recognise these crucial roles in child protection. It was an event that truly resonated with everyone fortunate enough to be part of it.

## Publications

SWIRLS was cited in a recent peer to peer [white paper](#) by the Australian Centre for Social Innovation (TACSI). TACSI stated that SWIRLS work surrounding peer support models for reunification has helped them shape their understanding of peer-to-peer and made a great addition to the white paper.



## Presentations

Dr Ben Lohmeyer presented on *Informal education, school bullying and 'public executions': Young people's experiences of the hierarchical nature of relationships in schools* at the British Educational Research Association Conference, Birmingham, UK.

Professor Sarah Wendt attended and presented on *the impacts of the exposure to DFV on children* at the 2 day conference Student Protection Inservice at the Catholic Education Diocese of Rockhampton. Her presentation shed light on a critical issues affecting children's well-being and contributed to raising awareness and fostering a deeper understanding of the complex challenges associated with domestic and family violence.

The message this year for National Child Protection Week (3-9 September) was 'Every child in every community needs a fair go', complemented with the theme 'Where we start matters'. SWIRLS Member Dr Carmela Bastian presented at the Healthy Development Adelaide (HDA) forum 'Starting early for children in need – where we start matters' on the safety and wellbeing of children in the context of women's shelters. The expert panel of speakers presented around their work in on a wide range of topics from babies, children, mothers and support programs.



## Upcoming Events

### CSWIR/SWIRLS International Public Lecture: The importance of lived experience in social work



The online event [SWIRLS and CSWIR - The importance of lived experience in social work](#) on Wednesday 18th October (6.30pm), will be presented by SWIRLS and the Centre for Social Work Innovation and Research (CSWIR) at the University of Sussex in the UK as an 'in conversation with' style webinar. We will discuss how the voices of consumers in the health and welfare sector is well established and increasingly important in the implementation of services. There is a growing movement in hearing the voices of people with lived experience to influence social work practice, education and research. This webinar includes panel members from the UK and South Australia to share their experiences and make recommendations for the way forward. Learn more and register via the link provided.

### Jeff Hearn Masterclass

SWIRLS presents an online [Masterclass](#) on Thursday 28th September, 4pm, with Professor Jeff Hearn, Hanken School of Economics, Finland. The topic of the masterclass is 'post paradigm thinking and the value of working across disciplines, fields and sub-fields'. Jeff is eager to make the Masterclass interactive, so registered participants are encouraged to send an abstract of their current PhD (or similar) beforehand. If you wish to provide an abstract, please send to [swirls@flinders.edu.au](mailto:swirls@flinders.edu.au) and we will compile these for Professor Hearn prior to the session. Learn more and register for the Masterclass via link provided.



# Flinders University Library News



## Open Access Week Events: 23-27 October

International [Open Access Week 2023](#) is an opportunity to join and raise awareness on the importance of research publications and data being openly available. This is particularly pertinent this year, with the introduction of Flinders University's [Open Access Policy](#) which has requirements for making publications open access in most cases. Session times can be found via [iEnrol](#).

**How to make your research open access.** By removing access barriers to published research, open access makes research findings available to everyone and your work has the best chance to be read, cited and shared. Green OA is where the Author Accepted Manuscript is placed into an Open Access repository such as Research Now (RN). RN is a platform for making papers open access for free, without having to pay for open access publishing through the publisher. This form of OA satisfies ARC and NHMRC requirements for research outputs. Research staff can [upload](#) a copy of the accepted manuscript to Research Now and then Library staff will make it open access in accordance with any publisher conditions. For more information about Open Access publishing please place a [Library research Query](#) via Service One.

**Access to articles from any journal.** The Library provides online access to [thousands of online journals](#) which can easily be accessed via FAN login from any location. The Library recognises that the wide scope of research being conducted means that researchers may occasionally require access to an article from a journal that is not subscribed to. The Library can still help with getting copies of these articles! By placing a request via our Document Delivery service, the Library can supply a digital copy of an article that's not already available and usually in under 24 hours. All university staff and postgraduates can access this service at no cost.

**Library Satisfaction Survey.** The biennial Satisfaction Survey results for CEPSW are now available to [view](#).

## Finance and Procurement Services Research Finance

Research Development and Support and Flinders Finance and Procurement Services offered the '**Research Finance-principles, systems and dashboards**' presentation which focused on:

- Overview of the structure and services
- Overview of researchers' financial responsibilities
- Detailed presentation on Financial Reports
- Detailed presentation of Finance Dashboards

A recording is available on the [RDS Training Sessions](#) site.

There are future presentation dates available, as follows:

- 10<sup>th</sup> October, 10.30am-11.30am

The information session is an interactive Teams webinar. Enrolments via [enrol](#).



### Assisting Grants Finance: Provide account details

The Grants Finance team has noted that one simple thing researchers could do that would assist them in responding to queries in a timely manner is to include the [relevant account number](#) in [both](#) the [subject line](#) and [body of an email](#).



# Higher Degree by Research

## CEPSW HDR UNSUPERVISED EVENTS

**Theme: Annual HDR Student Conference**

**Date: 30<sup>th</sup> October 2023**

**Time: All day, followed by prizes to be awarded at the Tavern**

**Location: Alere Function Centre plus online**



Please join us for our annual **HDR Student Conference** – for HDR Students, new and old. If you would like to present your work at the conference please submit your application here -

[https://qualtrics.flinders.edu.au/jfe/form/SV\\_d4P1ZqRKIAJmn8g](https://qualtrics.flinders.edu.au/jfe/form/SV_d4P1ZqRKIAJmn8g)

Keep an eye on your email inbox for updates from Helen on abstract submission details.

We can accommodate Confirmation of Candidature (CoC) and other milestone presentations. If you have already presented your work this year to another forum, we strongly encourage you to again share your work with your peers at the college conference.

**Who will be there?** Your peers, seasoned Academics & HDR Coordinators.

More details to follow as the schedule for the day is confirmed.

### CEPSW HDR Coordinator

Associate Professor Helen McLaren, College of Education, Psychology and Social Work

Telephone: Office +61 8 8201 3025 | <http://www.flinders.edu.au/people/helen.mclaren>

### CEPSW HDR Contacts

A reminder that if you have any concerns or questions that you might not feel comfortable asking your supervisor, please get in touch with any of the committee members and we will help you as best we can or point you in the right direction.

**Student Committee:** [epsw-hdr-sc@FLINDERS.onmicrosoft.com](mailto:epsw-hdr-sc@FLINDERS.onmicrosoft.com)

**Education:** [catherine.litchfield@flinders.edu.au](mailto:catherine.litchfield@flinders.edu.au); [glen.fernandes@flinders.edu.au](mailto:glen.fernandes@flinders.edu.au)

**Psychology:** [georgina.maddox@flinders.edu.au](mailto:georgina.maddox@flinders.edu.au) (Chair); [lucy.bird@flinders.edu.au](mailto:lucy.bird@flinders.edu.au); [sam.antoniades@flinders.edu.au](mailto:sam.antoniades@flinders.edu.au); [david.nicoll@flinders.edu.au](mailto:david.nicoll@flinders.edu.au)

**Social Work:** [tess.cunningham@flinders.edu.au](mailto:tess.cunningham@flinders.edu.au)

**Link to CEPSW HDR FLO page:** <https://flo.flinders.edu.au/course/view.php?id=56481>

**Twitter:** <https://twitter.com/EPSWHDR>

### HDR Spotlight

This month we'll hear from one of our PhD student on their HDR journey so far: Emilea Mysko, PhD Candidate in Education.

## HDR Spotlight on Emilea Mysko



### What's the overview of your PhD?

My PhD is researching parents attitudes and behaviours in youth sport and how their behaviour throughout the youth sports experience (before, during, and after the event) can be described as violence against children and/or foster the development of violent behaviours in children. Working with an industry partner (The Sammy D Foundation), I will evaluate their current sport parent education program (Monkey See Monkey Do). Using the findings from the evaluation along with a qualitative exploration of parents behaviour in youth sport, a new evidence and theory-informed sport parent education program will be developed, aimed to better inform and support parents through their child's sport participation.

### What is something that you have enjoyed during your PhD?

Challenging myself and learning new things (everyday) about two of the most important areas of my life (sport and parenting). Additionally, the research group of other PhD candidates I am a part of are an amazing group of like-minded people who help support me through the highs and the lows.

### What has been the biggest challenge?

Trying to overcome perfectionism (this is still a daily challenge) and realising and accepting that I can't compare myself or my progress to other PhD candidates or people.

### What advice do you have for someone starting their PhD?

Your PhD journey is incomparable to others. Every PhD experience (current or completed) is different, projects are different, and people have different life circumstances. Find a routine that works for you and be open with your supervisors about your needs and anything that you can feel may impact you during your PhD so they can best support you and help you achieve success.



Priyadharshany Sandanapitchai is a second year PhD candidate in Clinical Psychology under the supervision of Professor Reg Nixon. Priya's research focuses on evaluating a new guided self-help cognitive processing therapy (CPT-GSH) program to treat posttraumatic stress disorder (PTSD) in adults. Cognitive processing therapy is a first line treatment for PTSD.

This type of guided self-help intervention could help more people gain timely and cost-effective access to an evidence-based trauma treatment according to their individual level of need using a stepped-care model. Priya's study will be the first to investigate the effectiveness of stepped-care CPT-GSH as well as the practical factors behind providing this form of treatment.

As someone keen on sharing her subject matter insights, Priya thought 3MT would be a good opportunity to share her research across a wider audience. In this process, she learnt the important skill of how to translate the significance of her research in a succinct and non-technical manner that is understood by a multi-disciplinary audience. Priya's 3MT presentation can be viewed via this page:

<https://www.youtube.com/watch?v=IWXCzyAEvII&t=3s>

## NHRMC Investigator Grants

The next round of NHMRC Investigator Grants is opening soon. Dr Rui Hoo (Research Development Director, Health) invites you to contact her if you are considering an application to this round and would like to discuss your approach and strategy. Email [rui.hoo@flinders.edu.au](mailto:rui.hoo@flinders.edu.au), or phone 08 7421 9403.

- Applications open: 13 September 2023
- Applications close: 8 November 2023



### [Australian Consortium for Social and Political Research Incorporated \(ACSPRI\): Online Training Programs in social research methods and research technology](#)

Flinders University is an ACSPRI member institution and the research community are eligible for **generous discounts** on training programs. The link will show the program for September 2023.

### [12<sup>th</sup> International World Critical Dietetics Conference: \*Disrupting expertise in nutrition and dietetics teaching, practice and research\*](#)

Synchronous online delivery with local watch parties on **24-26 October in Australia**, and 23-25 October in Canada/USA. This year's World Critical Dietetics conference will bring together individuals across the globe to consider what constitutes expertise, and how the traditional notion of "expertise" can be disrupted. Our purpose is to spotlight the intersections of disciplines and perspectives that deepen the teaching, research and practice of critical dietetics and nutrition.

### [Media Training for Researchers with the Australian Science Media Centre](#)

**Thursday 30<sup>th</sup> November**, 10-12.30pm, web conference. This is led by Dr Joseph Milton, Senior Media Officer at Australian Science Media Centre (AusSMC), and will enable researchers to understand the media, how it works, what it wants and how to increase media interest in – and coverage of - your research. Dr Milton will be joined by Karen Ashford, Director of Media and Communications, other journalists and Flinders researchers (Professor Corey Bradshaw and Dr Romain Fathi).



Date	What's on	Who's there	Where?	Unsupervised?
5 <sup>th</sup> Oct	Q&A on Final Thesis submission	HDR students	Media Room in the Hub 3-4pm, then Tavern	
30 <sup>th</sup> Oct	Annual HDR Student Conference	Academics, HDR Coordinator, HDR Students	Venue Alere Function Centre All day event	
7 <sup>th</sup> Dec	HDR & FiMWELL joint X-mas catch up	Members of FiMWELL & HDR Students	Media Room in the Hub 3-4pm, then Tavern	