

# Research News

## Dean of Research

Dear all,

Hope you all are well.

**1) Celebrating Achievements:** Congratulations to Professor Emma Thomas and Associate Professor Ryan Balzan who secured a grant from the Office of National Intelligence; Associate Professor Ryan Balzan for receiving funding from the Mental Health Commissioner SA; and, Professor Shane Pill who was awarded a grant from Volleyball Australia.

**2) Research Domains Events:** A calendar of events is planned for the rest of this year. Please go to page 13 for further details.

**3) Cross College opportunities:** I am working closely with few other colleges to bring synergy to #TeamFlinders. Space to watch once things have been confirmed towards cross-college opportunities in the near future.

**4) HERDSA 2024 Conference:** I had the pleasure of co-convening the biggest HERDSA conference in Adelaide from 9 to 12<sup>th</sup> July. The conference had 567 delegates from 17 countries. One of the keynote Professor Dieter Schönwetter ran a workshop at Flinders University about Canadian indigenous perspective. We had over 166 participants who attended the preconference workshop at the Flinders New City Campus, and they were all impressed with our infrastructure and hospitality. Big shout out to Professor Romy Lawson, Professor Michelle Picard for making it happen and Sean Hartley for helping us on the day along with several Flinders' volunteers.



**5) College Research Awards:** Professor Tim Windsor will be leading the awards portfolio for our college, watch the space for exciting awards and how you can nominate people in due course.

Best wishes

Raj





### Mental Health Commissioner for SA

Associate Professor Ryan Balzan has been awarded a \$10,000 grant from the Mental Health Commissioner for SA for the project *Evaluation of an online psychoeducation programme for reducing the symptoms of eating disorders*.

### National Intelligence and Security Discovery Research Grant (NISDRG)

Professor Emma Thomas and Associate Professor Ryan Balzan, together with CIs Winnifred Louis (UQ), Mengbin Ye (Curtin) and Simon Angus (Monash), have been awarded \$799,517 from the Office of National Intelligence's NISDRG fund for the project *From conspiracy to extremism: Biased thinking and social influence in a post-truth world*. Mis/disinformation and conspiracies (misbeliefs) are encountered by people, who vary in their cognitive capacity to resist false or misleading information. Misbeliefs are also easy to share online and become forces for social and political change precisely when they are taken up by entire communities, providing a basis for ideologically extreme, reactionary or illiberal movements. Using cutting-edge experimental, natural language processing and agent-based simulations, this project aims to identify the social and psychological drivers of acceptance vs rejection of misbeliefs; and isolate the role of misbelief in the formation of extreme movements based on false narratives. Expected outcomes include empirically validated advances in relevant theories and methodologies to inform new, evidence-based approaches to disrupt malign influences, addressing the pressing human/behavioural, data analytic and situational awareness challenges of the Defence and National Intelligence Community.

### Volleyball Australia

Professor Shane Pill, together with Associate Professor Maarten Immink (CNHS), were awarded \$89,370 funding from Volleyball Australia for the project *Developing evidence informed game modifications for junior volleyball*.

## NHMRC-MRFF advisory committees 2024-2027

The following committees are being jointly established by NHMRC and the Department of Health and Aged Care to advise on research strategies and funding policies (for both MREA and MRFF) in each of the respective areas:

- **NHMRC-MRFF Consumer Advisory Group** - which will advise on consumer and community involvement in health and medical research, including on strengthening consumer involvement in MREA and MRFF grant programs.
- **NHMRC-MRFF Industry, Philanthropy and Commercialisation Committee** - which will advise on industry and philanthropic involvement in health and medical research and strategies to foster greater research commercialisation.
- **NHMRC-MRFF Public Health and Health Systems Committee** - which will advise on strategies for strengthening preventive health, public health, primary care and health services, and for embedding research translation in the Australian health system.
- **NHMRC-MRFF Indigenous Advisory Group** - which will advise on Aboriginal and Torres Strait Islander health research and capacity building for Indigenous health researchers.

The call for nominations for these committees has now opened. Information and how to nominate can be found on our website at: [Nominations for new Joint NHMRC-MRFF Advisory Committees and NHMRC Principal Committees | NHMRC](#)  
[Nominations are also now open](#) for the following NHMRC Principal Committees:

- **Research Committee** – advises on the quality and scope of health and medical research in Australia, including the application of the MREA, and on MRFF matters and policy.
- **Australian Health Ethics Committee** – advises on ethical issues relating to health and develop human research guidelines.

Nominations close 5pm AEDT Wednesday 31 July 2024.

Please contact [NHMRC.appointments@nhmrc.gov.au](mailto:NHMRC.appointments@nhmrc.gov.au) if you have any questions on the nomination process.



## Book Chapters

Pill, S. & SueSee, B. (2024). How can we develop physical skills for all abilities? In V. Girginov, & R. Marttinen (Eds.), *Routledge Sport Studies*. Routledge. <https://doi.org/10.4324/9780367766924-RESS95-1>

## Refereed Journal Articles

Barron, A.C., Thomas, E.F., & Woodyatt, L., (2024). # MeToo,# MenToo: How men's progressive and reactionary actions are shaped by defensiveness. *Frontiers in Social Psychology, 2*. <https://doi.org/10.3389/frsps.2024.1356998>

Berndsen, M., Thomas, E.F., & Tee, Y. (in press). Impact of Religious Commitment on National Identification and Engagement in Collective Action to Support Rohingya Refugees. *Asian Journal of Social Psychology*. <https://doi.org/10.1111/ajsp.12622>

Bird, L., Thomas, E.F., & Wenzel, M. (2024). "We despair": Examining the role of political despair for collective action and well-being. *European Journal of Social Psychology, 54*, 745-766. <https://doi.org/10.1002/ejsp.3052>

Brkic, E., Prichard, I., Dudley, S., Daly, A., & Beatty, L. (2024). Testing the efficacy of a brief online writing intervention on body image and distress in female cancer survivors. *Patient Education and Counseling, 127*. <https://doi.org/10.1016/j.pec.2024.108356>

Dondzilo, L., & Kemps, E. (2024). The role of cognitive biases involving selective interrogation of taste-based information in sugar-sweetened beverage consumption. *Journal of Behavior Therapy and Experimental Psychiatry, 85*, 101979.

Handerson, L., Bussey, K., Disney, L., & Geng, G. (2024). Disregarded and undervalued: Early childhood teacher's experiences of stress and anxiety during the COVID-19 pandemic. *Early Years*, <https://doi.org/10.1080/09575146.2024.2374059>

Kay, J., Elliott, S., & Cote, J. (2024). Redefining youth sport participation. *International Journal of Sport Policy and Politics*. <http://dx.doi.org/10.1080/19406940.2024.2377543>

Kelly, R., Calabro, R., Beatty, L., Schirmer, K., & Coro, D. (in press 2024). Evaluating campaign concepts aimed at replacing sugar-sweetened beverages with water. *Health Promotion Journal of Australia*. <https://doi.org/10.1002/hpja.903>

Mainsbridge, C. P., Iannucci, C., Pill, S., & Williams, J. (2024). Is there education in physical education? A narrative systematic review of research in physical education and learning. *Sport in Society*, 1–25. <https://doi.org/10.1080/17430437.2024.2368628>

Montero, A., Baranoff, J., Adams, R., & Drummond, M. (2024). Athletic retirement: factors contributing to sleep and mental health problems. *Frontiers in Psychology, 15*, Article 1350925. <https://doi.org/10.3389/fpsyg.2024.1350925>

Montero, A., Baranoff, J., Adams, R., & Drummond, M. (2024). Self-reported prevalence of sleep and mental health disorders in current and former athletes: a preliminary cross-sectional investigation of help-seeking behaviours. *Australian Psychologist*. Advance online publication. <https://doi.org/10.1080/00050067.2024.2357283>

Opozda, M., Drummond, M., Gupta, H., Petersen, J., & Smith, J. A. (2024). E-mental health interventions for men: an urgent call for cohesive Australian policy and investment. *Health Promotion International, 39*(2), Article daae033. <https://doi.org/10.1093/heapro/daae033>

Petersen, J., Drummond, M., Elliott, S., Drummond, C., Smith, J. A., Wadham, B., & Prichard, I. (2024). Examining the promotion of mental health and wellbeing in Australian sports clubs. *Sport, Education and Society*. Advance online publication. <https://doi.org/10.1080/13573322.2024.2351990>

Pryde, S., Kemps, E., & Prichard, I. (2024). "You started working out to get a flat stomach and a fat a\$\$": A content analysis of fitness inspiration videos on TikTok. *Body Image, 51*, 101769.

Quinney, B., Wenzel, M., & Woodyatt, L. (2024). The role of truth in victim-offender mediation: Victims of crime who feel they know the "whole" truth are more receptive to apologies. *Law and Human Behavior, 48*(3), 228.

Riggs, D.W., Patlamazoglou, L., Simmonds, J.G., & Snell, T. (Online First 2024). The role of animals in the bereavement experiences of Australian lesbians and gay men. *OMEGA: Journal of Death and Dying*. <https://doi.org/10.1177/00302228241237282>

Shafraan, R., Egan, S. J., de Valle, M., Davey, E., Carlbring, P., Creswell, C., & Wade, T. D. (2024). A guide for self-help guides: Best practice implementation. *Cognitive Behaviour Therapy, 1–15*. <https://doi.org/10.1080/16506073.2024.2369637>



Smith, L.G.E., Bliuc, A-M., Thomas, E.F. & McGarty, C. (2024). Polarization is the psychological foundation of collective engagement. *Communications Psychology*, 2, 41. Doi.10.1038/s44271-024-00089-2

Suryanto, S., Habiburrahim, H., Akmal, S., Zainuddin, Z., Safrul, M. S., & Hanani, F. (2024). Scrutinizing the Impacts of Grammarly Application on Students' Writing Performance and Perception. *Jurnal Ilmiah Peuradeun*, 12(2), 465-490. <https://doi.org/10.26811/peuradeun.v12i2.1235>

Wadham, B., Andrewartha, L., Lawn, S., Onur, I., & Edney, L.C. (2024). A scoping review of interventions targeting the mental health of Australian veterans. *International Journal of Environmental Research and Public Health*, 21(6), 796. [doi.org/10.3390/ijerph21060796](https://doi.org/10.3390/ijerph21060796)

Xiong, W., Radunz, M., Ali, K., King, D., Kyrios, M., Zhao, Y., & Fassnacht, D. (2024). Comparing the mental health and wellbeing of domestic and international tertiary students: A systematic review and meta-analysis. *Journal of International Students*, 14(4), 702–740. <https://doi.org/10.32674/jis.v14i4.6647>

## Reports

Wadham, B., Halsey, M., Hordacre, A-L., Waddell, E., Toole, K., & Collins, P. (2024). *Research into experiences of ex-serving Australian Defence Force (ADF) personnel in corrective services systems in Australia*. Department of Veterans' Affairs. <https://www.dva.gov.au/sites/default/files/2024-04/experiences-of-exserving-adf-personnel-in-corrective-services-systems-aust.pdf>



# Presentations

Associate Professor Lisa Beatty was an invited speaker and panellist at the Caring Futures Institute seminar, together with Prof Bogda Koczwar, Prof Catherine Paterson, DVC-R Prof Ray Chan, and patient advocate Monique Bareham, on "The Future of Cancer Survivorship at Flinders" Tuesday 28<sup>th</sup> May 2024.

Balzan, R. (2024, June). Invited speaker on *Metacognitive training for psychosis, eating disorders and depression across the lifespan* at the University of British Columbia, Department of Psychiatry, and BC Mental Health and Addictions Research Institutes. Vancouver, Canada.

Balzan, R. (2024, June). Invited speaker on *Novel brief interventions for psychosis: Cultural learnings from down under*.

Ali Enright, Cara Rossi, Emily Schwartz, and Lydia Woodyatt presented *Five reflexive lenses for university practitioners to support student equity*, at STARS (Students, Transitions, Achievement, Retention, Success) Annual Conference, July 2024, Melbourne.

Ali Enright, Helen Harrison, Eliza Kitchen, Samantha Kontra, and Masha Smallhorn presented *Enhancing student success and retention: Leveraging learning analytics and student engagement strategies*, HERDSA (Higher Education Research and Development Society Australasia), July 2024, Adelaide.

Professor Lydia Woodyatt ran a workshop for Port Adelaide football team on 18<sup>th</sup> July 2024. The event was held at PAFC and attended by 43 players and their performance coaches and support staff.

Professor Lydia Woodyatt ran a workshop for school leaders and career counsellors on the topic of social identity leadership and followership. This was organised by Flinders as part of our Career Counsellor development day held at SkyCity and City Campus, 20 July 2024.

Zainuddin, Z. (2024, July). Invited keynote *Building the workforce of the future: Cultivating digital skills in university graduates* at Business Innovation Sustainability and Technology International Conference (BISTIC 2024), Universitas Negeri Malang, Indonesia.

Zainuddin, Z. (2024, July). Guest lecturer at the Universitas Muhammadiyah Surakarta, Indonesia, on *Innovation in mathematics education – technological-based instruction for students' creativity*.





## & Professional Services

- Lisa Beatty has been selected as a *Cancer Australia* Expert Cancer Control Panel member under the capability of Supportive care in cancer control.
- Since 2021, Emeritus Professor Neil Brewer has assisted the [Criminal Cases Review Commission](#) (New Zealand) in the area of eyewitness identification. The Commission, which has been operating for 3-4 years has recently initiated a [Systemic Inquiry into Eyewitness Identification Evidence](#), following issues that have emerged in several cases before it. Emeritus Professor Brewer has now been appointed to an expert advisory panel for this Systemic Inquiry which will continue through 2024 and 2025.
- Emma Thomas was an invited panellist on *How fast, how far, how much and so what? The state of the art in assessing mis/disinformation impacts and effects* at the Global Information Conference Australia 2024-Phoenix Challenge which was sponsored by the US Department of Defense.
- Pill, S. 8<sup>th</sup> International TGfU Conference. Scientific committee <https://www.tgfu2024.co.nz/scientific-committee/>
- Pill, S. Reviewer: Swiss research foundation proposal.
- Pill, S. University of Tasmania Health Literacy and Equity Research Group meeting.
- Pill, S., & Agnew, D. Adelaide United - United in Schools primary school program meeting June 27.
- Damien Riggs was appointed as the Deputy Chair of the Human Research Ethics Committee B.
- Professor Ben Wadham has been appointed as a member of the Veterans' Health Advisory Council. This appointment is by nomination and appointees are notified by the Hon Chris Picton MP, Minister for Health and Wellbeing. The appointment is for a term of 12 months.
- Professor Ben Wadham has been invited by the Senate Foreign Affairs, Defence and Trade Legislation Committee to make submission to the inquiry into the Veterans' Entitlements, Treatment and Support (Simplification and Harmonisation) Bill 2024.

## Capacity Building & Impact

### Writing Retreat Update

The Research Writing Retreat held at the Flinders University City Campus on 4 July 2024 was a rip roaring success! Research and balanced academics attended across discipline areas, with many writing targets well-and-truly met. The retreat was very well received by all involved.

Thank you to Corporate Platters for providing a delicious morning tea and lunch-time spread.

In response to the successful day, an additional Research Writing Retreat has been scheduled for 25 September 2024 at the Flinders University City Campus. Morning tea and lunch will once again be provided. Further information will be sent out in coming days.





### **Institute Renewal Submission**

We are delighted to let you know that we have submitted our application for renewal of the Institute. The panel held stakeholder interviews this week and will now write their report and recommendations over the following weeks to be submitted to the DVC(R).

Thank you to all those involved! From providing content, reviewing, editing, participating in interviews, to propping up Reg or Kirsty when needed, this has truly been an Institute and College wide effort!! Special thanks to the FIMHWell Executive Committee as well as Deb and Raj for their extensive reviews and feedback.

### **Early to Mid-Career Research Awards**

We have also launched an EOI process for two research awards for FIMHWell members of up to \$3000 each. The awards are designed to align with the research goals of FIMHWell and the CEPSW Strategic Plan and are targeted towards Early to Mid-career researchers. Applications are due by COB Monday 29 July and if you would like any additional information, please contact [mentalhealthwellbeing.institute@flinders.edu.au](mailto:mentalhealthwellbeing.institute@flinders.edu.au).

### **New Fellowship in Suicide Prevention**

You may have seen the advertisement for the Breakthrough Senior Research Fellow/Research Fellow in Suicide Prevention. This position is sponsored by our key partner, Breakthrough Mental Health Research Foundation with funds raised at the Men's Meals and Mental Health Dinner held in May. Applications close on 12 August so make sure to spread the word through your networks. More details can be found [here](#).

### **Little Heroes Gala**

A few of the team were lucky enough to attend the Little Heroes Gala event in June. Little Heroes is a key partner of the Institute and this was their major fund raiser. In collaboration with the College, the Institute was very proud to support the event as a Platinum Sponsor.



## How can we accurately identify and support children's emotional wellbeing over primary-secondary school transitions?

*Dr Charlotte Bagnall (University of Manchester)*

### Biography

Dr Charlotte Bagnall is a Lecturer at the University of Manchester within Manchester's Institute of Education. Charlotte is an applied social psychologist, with a particular interest in intervention science and co-creation within education. She is a leading expert in school transitions research, with an established national and international research reputation within the field. Nationally she has been invited as an advisor in the design and evaluation of school transition provision within several Local Education Authority's. Her research has also been referenced in policy guidelines for NICE (07/22) and Health Scotland (01/20), and she has been invited to give several expert interviews, including for the BBC (12/23). Internationally, Charlotte is sought after for her intervention science expertise, including working with the University of Melbourne (Australia) to adapt and evaluate her *TaST 5-6* intervention (see below) across schools within Victoria, demonstrating clear international transferability. Charlotte is currently the Principal Investigator of the funded *P-S WELLS* research project and *TaST 5-6* intervention evaluation research project, which she will discuss in her presentation.



Twitter: @\_CBagnall

Email: [charlotte.bagnall@manchester.ac.uk](mailto:charlotte.bagnall@manchester.ac.uk)

Website: <https://research.manchester.ac.uk/en/persons/charlotte.bagnall>

### Abstract

Primary-secondary school transitions are a critical period for children, that poses heightened risk for the development of poor emotional wellbeing and mental health. However, the corpus of scales used to assess primary-secondary school transitions and emotional wellbeing during this time have considerable limitations, and critically there is no existing scale which comprehensively measures children's emotional wellbeing *in the context of* primary-secondary school transitions. This contextual measure is needed to holistically assess children's emotional experiences during this critical juncture, and has significant consequences for identifying and supporting children.

In the presentation, Charlotte will talk through the process of designing and validating the *Primary-Secondary School Transitions Emotional Wellbeing Scale (P-S WELLS)*; which is novel in its approach (e.g. asks children about their feelings towards the changes they are negotiating in context); and its longitudinal design and operationalisation.

As part of this, she will discuss how *P-S WELLS* can be used to: a) evaluate the efficacy of pre-existing primary-secondary school transition interventions; b) refine the content and delivery of pre-existing universal and targeted programmes; and c) provide the means for sensitive identification of 'at risk' children to participate in targeted interventions. In doing so, Charlotte, will discuss how *P-S WELLS* is currently being used to refine and evaluate her *Talking about School Transition 5-6 (TaST 5-6)* intervention (a universal emotional-centred transition intervention, which has been piloted in several local authorities in England and in Melbourne).



#### Date

12 Aug 2024



#### Time

3:00-4:00pm



#### Location

**This talk will be delivered online.**

Please join us via Microsoft Teams

(Meeting ID: 442 150 972 003

Passcode: TjatGr) or in-person in S55149.





**21 July 2024.** Australian Financial Review. *Nine signs your ambition may be damaging your health*, featuring Professor Tracey Wade comments on perfectionism which can make people more vulnerable to developing anxiety, depression or an eating disorder and can be decreased with interventions such as cognitive behavioural therapy.

**20 July 2024.** ABC Television News. Featuring Associate Professor Helen McLaren promoting the research of her team at Flinders University that had tracked the evolution of the Mockingbird Family care model over two years, its network dynamics, and impact related to carer retention and wellbeing of children and young people in foster care.

**19 July 2024.** ABC News Online. *Mockingbird foster program mimics an extended family for vulnerable kids* featuring Associate Professor Helen McLaren comments on the Mockingbird Family model of care.

**19 July 2024.** ABC Podcast. Interview with Associate Professor Helen McLaren about the Mockingbird family model of care: *Foster Care program provides kids with extended family*.

**16 July 2024.** The Invisible Men (of the AFL). Podcast featuring Professor Damien Riggs comments on details of the world-first survey of players' sexuality in the AFL Mens.

**15 July 2024.** University World News. *Open educational resources can address inequalities in HE*, a commentary article by Dr Tianchong Wang and co-authored with the Chief of Education at UNESCO and Pacific Regional Bureau of Education.

**11 July 2024.** The Advertiser; and associated media. *Top SA public schools outperforming any leading private schools in latest Better Education rankings*, featuring Emeritus Professor John Halsey comments on rankings depended on the cohort of students at a particular time and the socio-economic standing and the capacities of the families."

**8 July 2024.** ABC Radio Adelaide. Interview with Sarah Crossman about her recent systematic literature review findings and discussed the factors influencing adults' involvement in organised sport and highlighted a recommendation to consider how sport modifications may encourage more adults to engage in sport.

**4 July 2024.** TMS (Hong Kong). *How has Hong Kong adapted to AI*, featuring Dr Tianchong Wang comments on AI in education.

**3 July 2024.** ABC Late Afternoon. Interview with Professor Shane Pill on *Senior secondary student study-work balance*. ABC Late Afternoon radio program for regional South Australia and Broken Hill.

**3 July 2024.** SBS Online. *A common diagnosis deemed Riley unfit for the Defence Force. Some say it's a problem*. Features comments by Professor Ben Wadham that mental health challenges don't necessarily make people more vulnerable. "... in the research we've done, people that have had some of those challenges... can become more resilient".

**3 July 2024.** ABC Radio Adelaide. Interview with Dr Ben Lohmeyer on *Youth, violence and juvenile justice*.

**3 July 2024.** Michael West Media. *NACC: Veterans' Affairs boss dismissed misconduct complaint against herself*, featuring comments by Professor Ben Wadham on the documentation reflecting an overall atmosphere of tension between DVA officials and their clients. "Among DVA staff, there are some who lack empathy, have inadequate training, suffer excessive workloads, or have a poor understanding of the needs of vulnerable veterans."

**2 July 2024.** Channel 9 Today Extra. Interview with Dr Simon Wilksch on *Media Smart literacy lessons*. Article on this appeared in the Advertiser.

**30 June 2024.** The Guardian; AOL UK. *Defence probed 16 alleged links between personnel and extremism in two years*, features comments by Professor Ben Wadham that there are two broad risks for the ADF: members of extremist groups who join the ADF to gain military skills and those who join without an allegiance but for whom the military environment 'foments or galvanises their beliefs'.

**30 June 2024.** The Chronicle. *How social media is fuelling a deadly eating disorder epidemic*, featuring Professor Tracey Wade comments that pictures on social media are addictive for young people as it gives an oxytocin hit saying that it is my purpose and I can work towards this. Imagery is more powerful to our brain than words influencing emotion.

**29 Jun 2024.** Channel 7 news. Interview with Dr Simon Wilksch on *Tech giants accused of having blood on their hands*.

**29 June 2024.** The Advertiser. *Family outrage as execs deny social media harm to blame for deadly teen scourge: Tech giants with 'blood on hands'*, featuring comments by Dr Simon Wilksch.

**16 June 2024.** ABC Online. *Older Australians game to find new ways to stay active through modified competitive sport*. Article features findings from Ms Sarah Crossman's recent systematic literature review on adult sports participation: "We know that lots of factors get in the way of people getting involved in sport, particularly time, as people get older and busier with family and work commitments. We're suggesting that maybe we can rethink how sport is offered for adults."



# Flinders University Library News

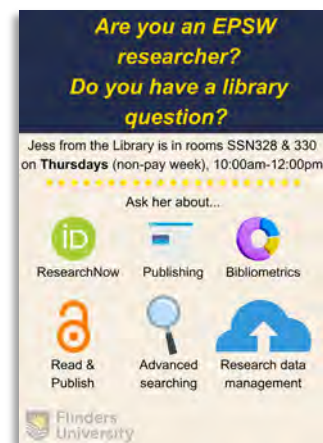


## Library drop-ins

Flinders University Library offers regular College-based drop-in support for staff, researchers, and HDR students. We can assist with questions including:

- [ResearchNow](#) profiles
- [Research data management](#)
- [Strategic publishing](#)
- [Open scholarship](#)
- [Bibliometrics](#)
- [Advanced search support](#)

Feel free to drop by to ask your Library research query- no appointment is necessary. CEPSW drop-in support is available **Thursdays 10:00am – 12:00pm** (fortnightly, non-pay week) at the Psychology administration office, SSN328 & SSN330.



If you can't attend a drop-in, contact us via [Service One- Library research query](#) for assistance. We look forward to working with CEPSW to see how the Library can support researchers' needs.

## Research data management and Indigenous Research Principles (CARE)

When we train researchers in data management planning, we ask if their research involves handling, managing, and/or analysing indigenous data. There is an important data principle called the CARE Principles for Indigenous Data Governance that researchers need to adhere to. CARE is referenced in *Section 5.4. Indigenous research data and data sovereignty* in the University's Research Data Management [Procedure](#). CARE is the acronym for: Collective Benefits, Authority to Control, Responsibility, Ethics. (Adapted from Australian Research Data Commons <https://ardc.edu.au/resource/the-care-principles/>). These principles aim to ensure that indigenous people's rights and interests are respected in the current movement toward open data and open science.

In the Australian context, the scope of Indigenous Data has been evolving and developing alongside global efforts, but with a local focus. A new definition was recently launched this year by the Indigenous Data Network at the University of Melbourne: "Data generated, intentionally or not, by, about, or for Aboriginal and Torres Strait Islander people. Indigenous data refers to information, in any format or medium, collected, analysed, stored, and interpreted within the context of Indigenous individuals, collectives, populations, entities, lifeways, cultures, knowledge systems, lands, biodiversity, water and other resources. It includes data collected, used, or stored by any agency, department, laboratory, organisation, corporation, statutory body, university or research institute, conducted by, with, and about Indigenous people or peoples, and data that Indigenous communities have generated and maintained themselves."

For more information about this topic please click [here](#).

For support with research data management please submit a [Library research query](#) via Service One or see [ienrol](#) for workshops.



## Tickets on sale now – 2024 Pink Yellow Blue Disco!



Join Flinders Foundation for a dazzling night of dining, dancing and disco fever at the 2024 Pink Yellow Blue Disco in support of cancer research and care right here at Flinders. For the past 35 years this annual event has been critical in supporting advances in cancer research and patient care.

This year Flinders Foundation is aiming even higher and has set its sights on making a bigger impact than ever before! This is our chance to come together, and dig deep, to fund the next breakthrough and improve care for patients and their families affected by a range of cancers.

Book your tickets [here](#).

**Date:** Saturday, 12 October 2024

**Time:** 6pm until late

**Venue:** Adelaide Convention Centre

**Dress:** Semi-Formal (with a splash of disco!)

**Tickets:** \$230 per person (\$2,300 for table of 10) and includes dinner, hip disco tunes, funky entertainment and premium beverage package.

For further information contact Flinders Foundation on (08) 8204 5216 or email [events@flindersfoundation.org.au](mailto:events@flindersfoundation.org.au)



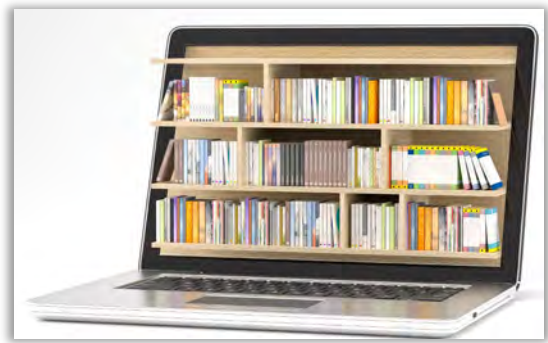
Imagine the rush of adrenaline as you conquer your fears and abseil an impressive 70 meters from the top of this Adelaide landmark.

Whether you're an adrenaline junkie or a first-time abseiler, this is your chance to make a difference while experiencing the ultimate thrill!

Last year, Flinders Foundation witnessed the awe-inspiring bravery of 60 individuals who took the plunge, raising over \$80,000 for this important cause. Among them were researchers, real estate agents, builders, and even patients themselves – all united by a shared passion for making a positive impact.

[Step up and conquer your fears – be part of something bigger!](#)

# Higher Degree by Research News



## HDR Events

**Demystifying the Publishing Process:** This seminar will be presented by Research Librarians and held on **Wednesday 7th August 2024, 2.30-3.30pm, in EDUC Room 2.09**. The presentation will cover what it means to 'write for a journal' by showing examples of peer-reviewed journals, their criteria, what is required from authors, what is involved in submitting, and the payment portals by way of an overview of what you can expect. The event will include a 20 minute presentation by Research Librarians Shannon and Josephine and then there is time for Q&A.

**HDR Conference 2024:** The 2024 HDR Conference will be held on **Monday 28th October 2024** at the Alere Convention Centre at Bedford Park campus. Please save this date in your calendar.

The Call for Abstracts are due Monday 12th August 2024.

Registration is essential and all relevant information is found on the registration site.



## HDR FLO page

The [HDR Student FLO](#) page contains extensive information for HDRs. You can find details about support services such as Flinders Library, Inspire, and Service One, Funding & Forms (including the College's HDR Awards application forms and guidelines), a section on Milestones and much more.

## HDR Student Committee

The HDR Student Committee for 2024 has monthly meetings and comprises of the HDR Coordinators (Dan and Ben) and four HDR students: Emily Haines (Psychology) who is the College's HDR Student Representative, Yeling Shen (Education), Michael Montejo (Psychology) and Sam Arthurson (Social Work).

If you have any questions, concerns or ideas about and for the HDR journey, please feel free to email:

Education: [yeling.shen@flinders.edu.au](mailto:yeling.shen@flinders.edu.au)

Psychology: [emily.haines@flinders.edu.au](mailto:emily.haines@flinders.edu.au);

[mont0179@flinders.edu.au](mailto:mont0179@flinders.edu.au)

Social Work: [arth0092@flinders.edu.au](mailto:arth0092@flinders.edu.au)

## HDR Coordinators

Associate Professor Dan King: [dan.king@flinders.edu.au](mailto:dan.king@flinders.edu.au) (Lead)  
Dr Ben Lohmeyer: [ben.lohmeyer@flinders.edu.au](mailto:ben.lohmeyer@flinders.edu.au) (Deputy Lead)

## HDR Success

Congratulations to **Dr Alexandra Canty** who received A/As for her thesis and received a letter from Professor Tim Cavagnaro congratulating her on behalf of the University Higher Degree by Research Committee. Alex's thesis title is: *Using experience sampling methodology (ESM) to improve our understanding of day-to-day intrusion experiences and persistent post-trauma impacts in survivors of trauma.*



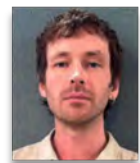
Emily



Yeling



Michael



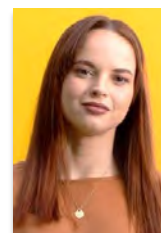
Sam



Dan



Ben





## HDR Spotlight on Alex Owens

We would like to introduce Alex Owens, a PhD student in Psychology. Her thesis is titled *What care is provided by midwives to support women at risk of/or experiencing removal (AROAR) of their infants post-birth in South Australia (SA): What facilitators and barriers impact care for these women and influence the midwives involved.*



### What's the overview of your thesis?

I will be looking at what care is provided by midwives to support women at risk of/or experiencing removal of their infants post-birth in South Australia and what facilitators and barriers impact care for these women and influence the midwives involved. I have been a midwife for over 25 years, and I am keen to understand how the systems, infrastructure, support and care can be improved for families facing these challenges in South Australia.

### What is something that you have enjoyed during your PhD?

Having just started at the end of March, I am enjoying getting to know the process of studying again and university life. As a mature student being on campus and finding my way around has been lovely, people have been really friendly and helpful. I have been pleasantly surprised at the amount of dedicated support and development there is for HDR students, which is very reassuring. I am excited to be at the beginning of this journey, especially as I am working across two colleges and disciplines, Midwifery and Social Work.

### What has been the biggest challenge?

Finding the confidence to actually do it! Also juggling work and being disciplined and sitting down and getting over the initial hurdle of where to start and how to begin managing the workload and what the priorities are.

### What advice do you have for someone starting their PhD?

Try and be organised from the get-go, using the tools provided in Inspire; keep in touch with your supervisor regularly and take advantage of all the help, support and guidance out there. Remember why you are doing it and what inspired you to start the PhD in the first place and enjoy it!

## The Three Minute Thesis (3MT®) CEPSW Heat

The CEPSW [3MT](#) heat was held on Wednesday 10<sup>th</sup> July 2024 with 20 attendees. Congratulations to Leah Smolarek (PhD Candidate, Psychology) who won and will go through to the semifinals, and Tharin Sayed (PhD Candidate, Psychology) who was runner up. The People's Choice was a tie and went to Boaz Mui and Tharin Sayed (PhD Candidates, Psychology). Leah will represent CEPSW at the University's Semi Final on Monday 12 August 2024.

*My PhD research explores how self-compassion influences prosocial behaviour and helping tendencies, focusing on its role in reducing psychological barriers like defensiveness and distress. The project includes a large-scale systematic review to clarify the relationship between self-compassion and prosociality, along with a series of experimental studies to investigate how self-compassion impacts real-time responses to helping situations, particularly when people are feeling threatened or uncomfortable. My goal is to provide a deeper understanding of this complex area of research, and to shed light on whether being nicer to ourselves might make it easier for us to be nicer to others. (Leah, winner of CEPSW 3MT Heat and received \$100)*

*Tinnitus refers to any phantom sound that a person hears, in the absence of any external sound. It can be caused by a variety of conditions, making it quite difficult to effectively treat. My PhD project focuses on tinnitus management, using High-Definition Transcranial Stimulation (HD-tDCS) and Cognitive Behavioural Therapy (CBT). HD-tDCS is a new technique that involves stimulating the brain to induce neuroplastic changes which effects the perception of tinnitus loudness and annoyance. On the other hand, CBT is an evidence-based treatment that focuses on changing the emotional and behavioural responses to tinnitus, effecting tinnitus-related distress. Working together, this project aims to reduce tinnitus perception in the long-term. (Tharin, runner-up of CEPSW 3MT Heat and received \$50)*



## Researcher PD & Training

Date	Topic	Date	Topic
Jul 24	<a href="#">MRFF Post-Award Reporting Requirements</a>	Jul 25	<a href="#">How to Successfully Bid for Tenders</a>
Jul 30	<a href="#">ARC Linkage Projects: Strategies to write and submit a successful application</a>	Aug 2	<a href="#">ARC Discovery Projects EOI Information Session</a>
Aug 6	<a href="#">Understanding and using your Research Metrics</a>	Aug 6	<a href="#">ARC DECRA &amp; Future Fellowships: Bid strategy and grantscraft</a>
Aug 7	<a href="#">Pitch Perfect ResearchNow Profiles - Library</a>	Aug 13	<a href="#">Partnering with Consumers in Research</a>
Aug 14	<a href="#">Research Data Collection and Management Using REDCap</a>	Aug 15	<a href="#">Finding Funding Opportunities: Navigating 'Research Professional'</a>
Aug 16	<a href="#">ARC DP EOI Pitching Session CEPSW</a>	Aug 21	<a href="#">Speed Dating for Researchers</a>
Aug 22	<a href="#">Writing a ROPE for your ARC Grant Applications</a>	Aug 28	<a href="#">Keeping up to date: Tracking current Research - Library</a>



### [Asia Pacific Autism Conference](#)

Autism Association of Western Australia is hosting the Asia Pacific Autism Conference 2025. Please save the date and keep updated by visiting the website. 13-15 November 2025, Crown, Perth.

### Research Domains: Schedule of Events

CB&I = Capacity Building & Impact; IP = Indigenous Partnerships; HC&T = HDR Coordination & Training; I&E = Industry & Enterprise

Date	Domain	Event	Details
August	CB&I	<a href="#">Management and running of research projects</a>	Tba
7 August 2.30-3.30pm	HC&T	<a href="#">Demystifying the Publishing Process</a> Room EDUC 2.09 or via Teams	Presented by the Research Librarians
September	I&E	<a href="#">Cultivating industry connections workshop</a>	tba
18 September 12-2pm	IP	<a href="#">Workshop: Cultural Safety in Research and Workplace Contexts.</a> Room SSN204	Presented by Kimberley Wanganeen
September	CB&I	<a href="#">Media MECRA Workshop</a>	Tba
25 September	CB&I	<a href="#">Writing Retreat</a>	City Campus
30 October	IP	<a href="#">Workshop: Culturally Responsive Practice-Working with and Engaging First Nations People.</a> Room SSN204	Presented by Kimberley Wanganeen
28 October 8.30-5pm	HC&T	<a href="#">HDR Conference 2024 @ Alere Function Centre</a>	Abstracts due 12 August
November	I&E	<a href="#">'Bob Paddick' lecture</a>	Tba
26 November	CB&I	<a href="#">Writing Retreat</a>	City Campus
27 November 12-2pm	IP	<a href="#">Workshop: Allyship.</a> Room SSN204	Presented by Kimberley Wanganeen & Arthur Konstad
2-5 December	I&E	<a href="#">Visiting Scholars: Dr Claudio Farias, University of Porto</a>	Tba