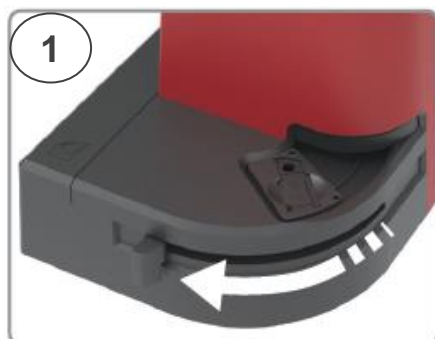


HemoCue WBC DIFF Device Care

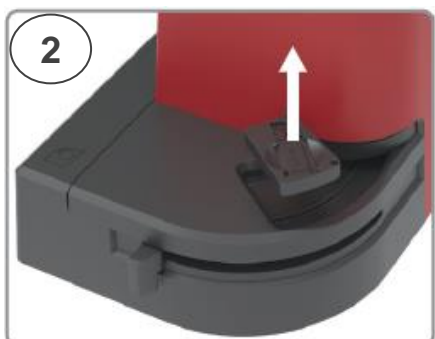


How to Clean Cuvette Holder

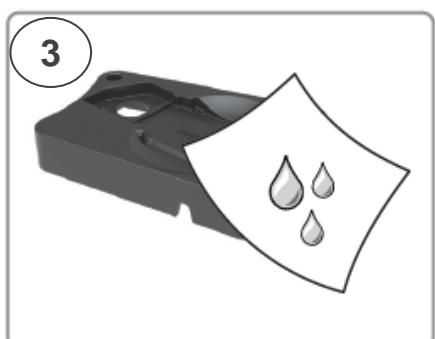
weekly, or when visibly dirty



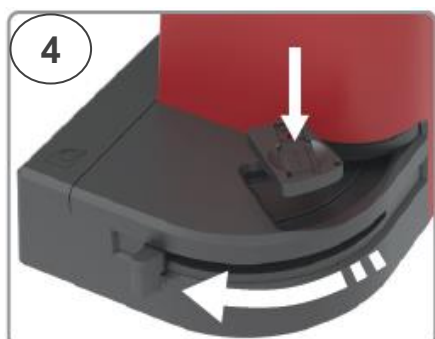
- Turn device **OFF**.
- Pull cuvette moving arm out so cuvette holder is visible.



- Remove cuvette holder by lifting it straight up.



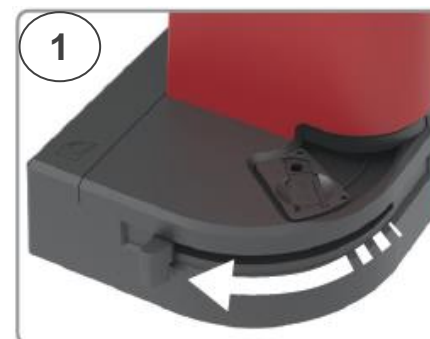
- Clean with 20-70% alcohol or mild detergent.
- **Leave out** of the device for at least **15 minutes**.



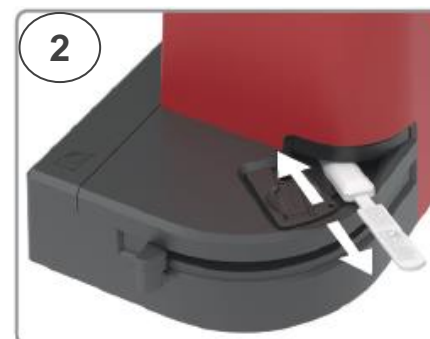
- Replace the clean cuvette holder.
- Wipe cover of device with 20-70% alcohol or mild detergent.

How to Clean Optical Parts

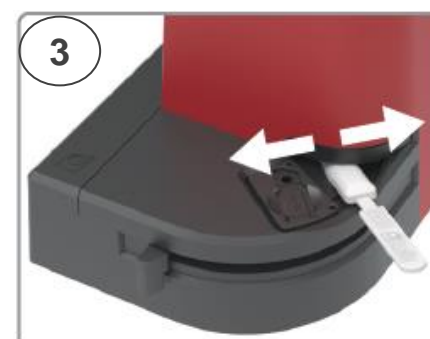
monthly, or when see *Err30*



- Turn device **OFF**.
- Pull cuvette moving arm out so cuvette holder visible. Leave cuvette holder in place.
- Unwrap HemoCue Cleaner Plus stick & ensure it is moist.



- Hold cleaner stick with logo facing up. Push stick as far as possible into opening of optical unit.
- Move back and forward along cuvette holder **10 times**.



- The optical parts are located on the left in the opening.
- Move cleaner stick side to side **10 times**.



- Insert cleaner stick as far back as possible & prop up with a cotton bud. **Wait 5 minutes**.
- Dispose of cleaner stick as infectious waste. **DO NOT** reuse.
- **Wait 15 minutes prior to use**.