

Flinders University Pre-departure Guide



2020





Welcome to Flinders University

Congratulations and welcome to Flinders University- we are so pleased you are joining us! This is an important time of growth, exploration and transformation for you, and one we want you to enjoy! I invite you to immerse yourself in campus life, our community environment, the culture of Australia, and get involved in the many exciting events and activities we host year-round.

We are particularly aware of how challenging it can be to adjust to a new environment, so I encourage you to seek assistance early if you have any concerns or questions at all. Our community wants to make sure you can adjust as quickly as possible to Flinders and to Adelaide.

Even before you arrive on campus you will be well-supported here at Flinders. Student support teams will assist you through your settling in phase and will help you to connect with a wide range of support services and staff in your academic area- we are always at your fingertips!

Wishing you all the very best for your time with us here at Flinders University!

Romy Lawson
Senior Deputy Vice-Chancellor



Top 2% University

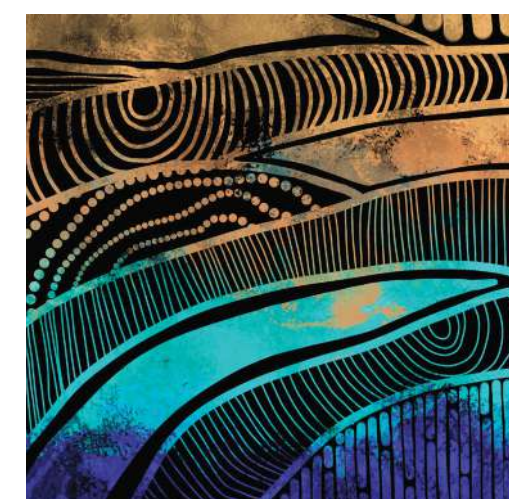
THE World University Rankings 2026 as a percentage of the total number of universities in the world according to the International Association of Universities.

Ranked No. 1 in SA for student support

The Good Universities Guide 2026, public SA-founded universities only (undergraduate)

No. 1 SA university for full-time employment

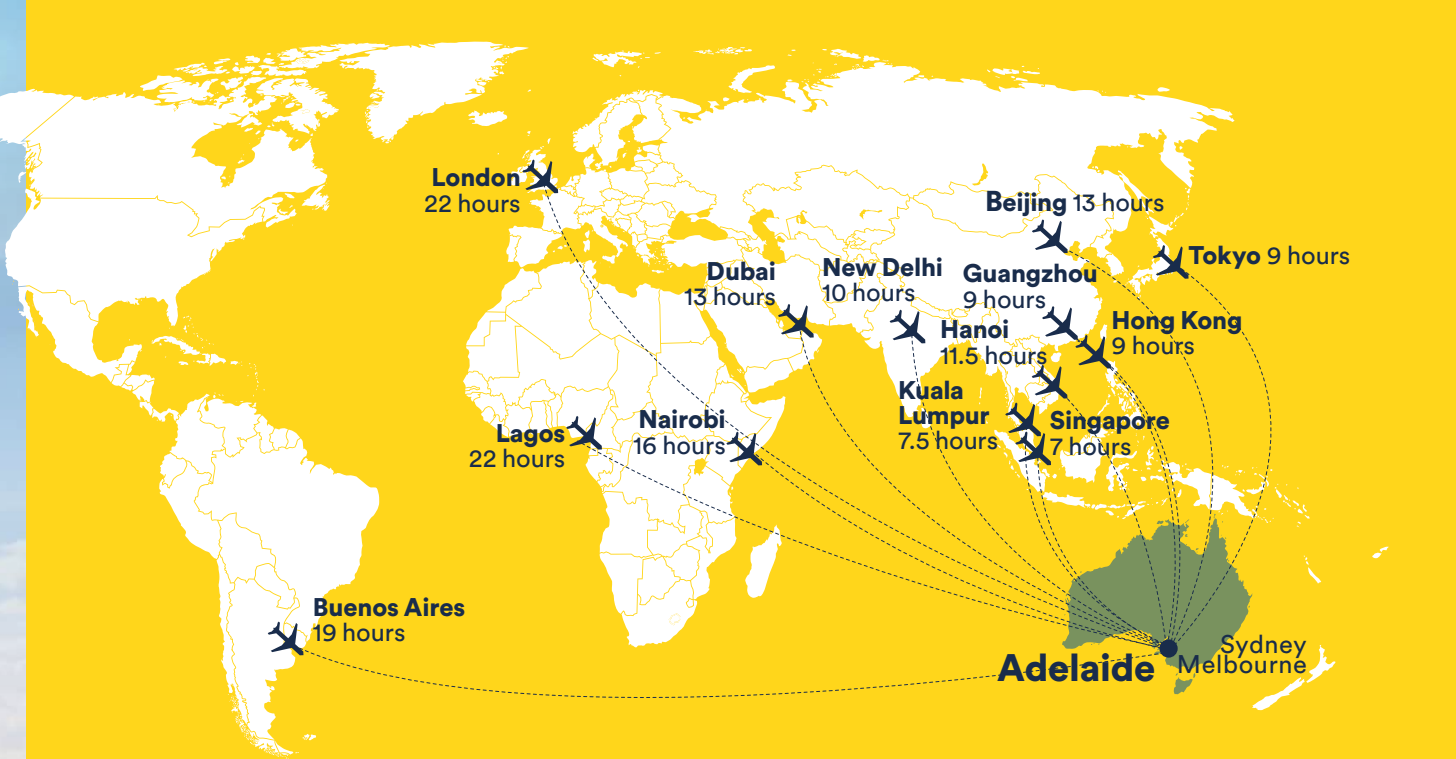
The Good Universities Guide 2026, public SA-founded universities only (postgraduate)



ABOVE: Artwork by contemporary Aboriginal artist Elizabeth Close, a Pitjantjatjara Yankunytjatjara woman and Flinders alumna. This artwork responds to and reflects the incredible natural landscape in and around Flinders, and seeks to place into stark relief the elements of earth and water, coast and landscape; sun, flora and fauna. The artwork features as a mural in the Tjilbruke Student Lounge, Yungkurinthe Truku Building at Flinders Bedford Park campus.

Flinders University acknowledges the Traditional Owners of the lands on which its campuses are located, these are the Traditional Lands of the Arrernte, Dagoman, First Nations of the South East, First Peoples of the River Murray & Mallee region, Jawoyn, Kurna, Larrakia, Ngadjuri, Ngarrindjeri, Ramindjeri, Warumungu, Wardaman and Yolngu people. We honour their Elders and Custodians past and present.

Before you arrive



Arranging a student visa

You are required to apply for a student visa sub class 500 online regardless of your chosen course. Use the Document Checklist Tool immi.homeaffairs.gov.au/visas/web-evidentiary-tool to help you find out the documents you need to provide with your student visa application.

Fees

As an international student, you are required to pay your first semester tuition fees before entering Australia. The amount required depends on your enrolled course and will be stated on your Letter of Offer. For subsequent semesters, you will not be invoiced but you can check your fee account from your Student System.

Prepare your travel

The following links can help you prepare for your travel to Australia:
Pre departure checklist: studyaustralia.gov.au/en/plan-your-move/preparing-to-travel
Restricted items: abf.gov.au/entering-and-leaving-australia/can-you-bring-it-in

Time zones

Australia is divided into three time zones, with Adelaide coming under Australian Central Standard Time (ACST).
Time difference between Adelaide and overseas:
Indonesia - 2.5 h
China, Malaysia, Singapore - 1.5 h
USA - 18 h
United Arab Emirates - 5.5 h
Delhi, India - 5 h
Nairobi, Kenya - 7.5 h

Flights

You can fly to Adelaide from anywhere in the world, and there are many direct flights available. Estimated flight times to Adelaide*:

Kuala Lumpur - 7.5 h	Hong Kong - 9 h
Buenos Aires - 19 h	New Delhi - 10 h
Dubai - 13 h	London - 22 h
Beijing - 13 h	Hanoi - 11.5 h
Tokyo - 9 h	Lagos - 22 h
Guangzhou - 9 h	Nairobi - 16 h
Singapore - 7 h	

* Some flights require stopover



Adelaide has offered much more than academic opportunities. Adelaide's overall affordability has made my student life more manageable, and the diverse food and entertainment options have added a delightful dimension to my experience, creating a perfect balance between academic pursuits and the enjoyable lifestyle Adelaide has to offer.
Gabrielle Genty Doctor of Philosophy, Colombia

When you arrive

Documents to bring with you

Official documents you will need on arrival in Australia:

- valid passport and student visa grant letter
- offer letter from Flinders University
- Confirmation of Enrolment (eCoE) issued by Flinders University
- receipts of payments (e.g. tuition fees, OSHC, bank statements etc.)
- original or certified copies of your academic transcripts and qualifications
- other personal identification documents
e.g. birth certificate, ID card, driver's licence
- medical records and/or prescriptions.
- COVID19 Vaccination certificate

Clothing

Summer in Australia is from December to February, autumn from March to May, winter from June to August, and spring from September to November.

In Adelaide, the hottest months are January and February. If you arrive in June or July, the coldest months of the year, you may need to bring or buy winter clothing and blankets.

Season average temperature range:

Summer (December to February)

25°C to 35°C / 77°F to 95°F

Autumn (March to May)

20°C to 25°C / 68°F to 77°F

Winter (June to August)

10°C to 15°C / 50°F to 59°F

Spring (September to November)

20°C to 25°C / 68°F to 77°F

To check the weather, download the **BOM Weather app**

Travel money

Bring a small amount of cash in Australian dollars for food and transport. Make sure you also travel with a VISA or MASTERCARD, as many places, including on public transport require card payment.

Mobile Phone

You can bring a mobile phone which works with Australia's mobile technology. The website acma.gov.au can help you. Otherwise, you can buy a phone when you arrive. There are four major mobile phone providers: whistleout.com.au

Meet and Greet

ISS provides a free 'meet and greet' arrival service. A team member can meet you at the airport, train or bus station in Adelaide. Book this service at least 5 working days before you arrive in Adelaide. students.flinders.edu.au/support/iss/planning-arrival

Declare It

Australia has strict rules to protect it from biosecurity risks. To know what you can and cannot bring, visit abf.gov.au/entering-and-leaving-australia/can-you-bring-it-in/overview



Finance

Money

To cover your initial expenses, you will need between \$3,000AU and \$6,000AU. On arrival you can open a bank account and use either a debit or credit card to pay for rent, food and utilities. The four major banks in Australia are ANZ, Commonwealth Bank, National Australia Bank and Westpac. You will need your passport and some cash to open an account. Most Australian banks charge fees for a bank account or a banking service.

You will also require your visa grant letter to avoid paying bank fees, as international students don't pay maintenance fees.

Read our [Preparing for your journey](#) page for information on how much money to bring and banks in Australia

students.flinders.edu.au/support/iss/planning-arrival/preparing-for-your-journey

Working in Australia

You can work a maximum of 48 hours per fortnight during the term and unlimited hours when your course is not in session if you are undertaking a bachelor/graduate certificate/graduate diploma/ masters by course work. If you are doing masters by research or PhD, you can work unlimited hours any time of the year.

For more information:

students.flinders.edu.au/support/iss/working-whilst-studying

There are number of online employment websites which can assist you:

careerone.com.au

seek.com.au

au.indeed.com

Adelaide cost of living estimates

Average weekly costs per week in \$AUD^:

Rent – City (Shared)	\$300-\$600
Utility Bill (Shared)	\$50
Groceries	\$60-\$100
Phone and internet	\$25
Public Transport	\$15
Entertainment	\$80+

^ Average student budget in Adelaide, calculated using the Study Australia cost of living calculator



The city offers a comfortable and relaxed lifestyle, providing convenient transport options and a manageable cost of living. The friendly and welcoming atmosphere and its multicultural environment have made adapting to life in Adelaide enjoyable and rewarding.

Karanpal Singh Master of Social Work, India



Housing

On-campus housing

Flinders Living or the Flinders Medical Centre Flats are on campus housing options if you are studying at the Bedford Park, Sturt or Tonsley campuses.

To apply at Flinders Living visit [Flinders.edu.au/living](https://flinders.edu.au/living)

Off-campus housing

If you choose to live off campus the following websites will assist you in finding rental accommodation:

- [Flinders.edu.au/living/short-term-private-accommodation](https://flinders.edu.au/living/short-term-private-accommodation)
- students.flinders.edu.au/support/iss/accommodation

A security deposit or bond is required by a landlord or property agent. The bond is to guarantee the owner reimbursement if you leave the premises damaged or with rent owing. If you leave the property in good condition and with all rent, paid your bond should be returned to you in full once you have left the property.

Types of housing

There are many types of off campus housing, from private rental house and flats, sharing house, room only accommodation and full board homestay. Visit our Planning Your Arrival page for information on the types of housing and to know your rights: students.flinders.edu.au/support/iss/planning-arrival

The Flinders University campus is a great place to study because it is away from the hustle and bustle of the city with a quiet and peaceful environment. The proximity of each campus and facilities makes it easy to go for a walk to get one from end to the other. In my first year, I lived on campus at Flinders Living. This was a great experience because it's a 5 minute walk to class, the library and the Flinders Gym. The environment is also safe for students to access even late at night.

Francis Tungcol, Master of Physiotherapy, Canada



City accommodation

The Switch

The Switch is Flinders University's key accommodation partner in the Adelaide CBD.

A co-living space that is redesigned for the younger generation and equipped with all-inclusive world-class amenities. It's a 5 minute walk to the Flinders City Campus and just a 22 minute train ride to the Bedford Park campus.

switchliving.com.au/flinders-university



Adelaide is alive and vibrant. Local fresh food markets, exciting restaurants and cafés, international sporting events and world renowned arts festivals are just a few of the reasons that studying in Adelaide gives you a quality of life you won't find anywhere else in Australia.

More than 38,000 students from 130 countries choose to study, live and work in Adelaide. The city designed for life.
flinders.edu.au/international/living-in-adelaide

Helpful links

www.studyadelaide.com
www.southaustralia.com

Top 10 things to do in Adelaide

southaustralia.com/travel-blog/top-10-things-to-do-in-adelaide

Festivals

South Australia is known as the 'Festival State', with regular cultural and sporting events held right across the year, including:

- WOMADelaide
- Adelaide Festival
- Adelaide Fringe
- Tour Down Under
- Tasting Australia

Food

If you love great food, you'll love Adelaide. The city is full of stunning cafés and restaurants. South Australia is well known for producing high-quality produce, from fresh fruit and vegetables through to the finest meat and seafood. The city is also close to high quality produce regions, such as the Barossa Valley and McLaren Vale. Adelaide is a multicultural city well catered to vegan, vegetarian, halal and kosher requirements.

**Adelaide is
ranked in the top
30 student cities
globally**

QS Best Student Cities 2024

Welcome to Adelaide, South Australia

Campus life



International Student Services (ISS)

ISS is part of Student Life and is the specialist service supporting international students and staff at Flinders. We deliver international student specific orientation and social activities including trips and tours at low cost. All information relating to ISS activities is sent via student email, so check your university email regularly. Visit: students.flinders.edu.au/support/iss

Flinders University Student Association

Flinders University Student Association (FUSA) is the student organisation that represents the rights and interests of students. fusa.edu.au/about
Join a club via: students.flinders.edu.au/uni-life

OASIS

OASIS is a student community wellbeing centre focused on supporting the physical, emotional, social and spiritual needs of students. Most international students visit the Oasis community

centre for studies, social activities and to meet staff and other students. oasis.flinders.edu.au

Flinders University Sport and Fitness

Flinders One Sport and Fitness is open 7 days per week for 24 hours a day and offers a range of fitness and wellness activities. To join: onesportandfitness.com.au

Careers and Employability

If you need help in planning your career, broadening your skills and experience and connecting you to potential employers and industry professionals. students.flinders.edu.au/support/careers

Flinders University Museum of Art

Interested in art? Check the collection at FUMA: flinders.edu.au/museum-of-art

Study spaces

A variety of spaces and resources for students are available on campus. You can use the PCs, connect your own device using wifi on campus or print at designated printing areas.
flinders.edu.au/campus

Campuses

Bedford Park

Located just 12km south of the centre of Adelaide, the Bedford Park campus is Flinders’ main campus. It’s a spacious, elevated site with panoramic views to the coast and over the city. Our Student Hub offers 24/7 study spaces and access to all student services in one convenient location. It is also a short walk from Flinders Sturt precinct, and on-campus student accommodation, Flinders living.

Tonsley

Flinders’ Tonsley campus is a \$120 million hub of innovation which centrally locates the University’s teaching and research in computer science, artificial intelligence, defence and national securities, autonomous vehicles, information technology, engineering and mathematics.

Along with some of Adelaide’s biggest businesses and globally-recognised organisations, Tonsley is also home to the Flinders Medical Device Research Institute (MDRI) and Institute for Nanoscale Science & Technology. Flinders’ Tonsley campus is also an incubator for entrepreneurs and future employers who are creating next generation start-ups through the Flinders New Venture Institute.



The Plaza Bedford Park



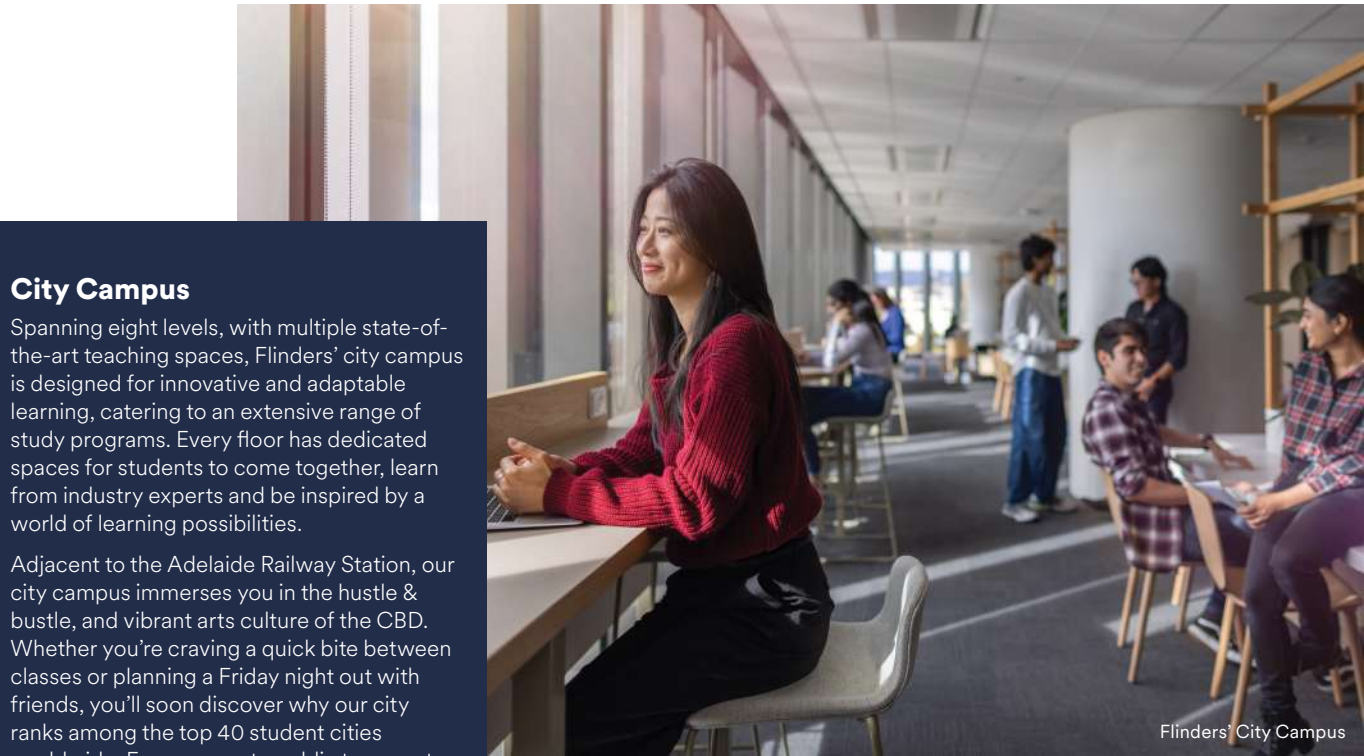
Tonsley



Flinders Health and Medical Research Building

Flinders University’s cutting-edge Health and Medical Research Building (HMRB) has marked a transformative new chapter for health and medical research in South Australia.

Home to over 600 medical researchers, clinicians, and support staff, the \$280 million, ten-storey landmark is poised to tackle the most pressing health challenges of our time.



City Campus

Spanning eight levels, with multiple state-of-the-art teaching spaces, Flinders’ city campus is designed for innovative and adaptable learning, catering to an extensive range of study programs. Every floor has dedicated spaces for students to come together, learn from industry experts and be inspired by a world of learning possibilities.

Adjacent to the Adelaide Railway Station, our city campus immerses you in the hustle & bustle, and vibrant arts culture of the CBD. Whether you’re craving a quick bite between classes or planning a Friday night out with friends, you’ll soon discover why our city ranks among the top 40 student cities worldwide. Easy access to public transport allows you to explore the city centre and beyond, with connection to our Tonsley and Bedford Park campuses via the door-to-door rail link.

Flinders’ City Campus

Bus, train and tram

Adelaide Metro run public transport in Adelaide. The website adelaidemetro.com.au gives you access to general customer information as well as fares, timetables, new and special offers.

Bikes

You can plan to ride to Flinders using either bike lanes or secondary roads and explore Adelaide via bike. Make sure you know the road rules and safety.

Bike route maps are a good way to plan your route and these can be downloaded from sa.gov.au/topics/driving-and-transport/cycling/cycling-maps

Driving in South Australia

As a visitor with a temporary visa you can drive in South Australia but must only drive the type of vehicle authorised by your licence. You must always carry your current driver's licence issued overseas at all times. If your licence is not in English you must carry an International Driving Permit or an English translation. Make sure to know the road rules and safety: sa.gov.au/topics/driving-and-transport/roads-and-traffic/australian-road-rules

Parking on Campus

Paid parking is available on campus for staff, students and visitors. students.flinders.edu.au/uni-life/bedford-park/parking

Shopping

Major supermarkets are:

- Aldi: aldi.com.au
- Coles: coles.com.au
- Drakes: drakes.com.au
- Foodland: foodlandsa.com.au
- Woolworths: woolworths.com.au

The Marion Shopping Centre is nearby Bedford Park campus and includes large department stores as well as speciality shops. westfield.com.au/marion

Rundle Mall is next to the City Campus and is in the heart of the city of Adelaide. The mall offers shopping, dining and entertainment with over 100 retail stores and services. rundlemall.com



Transportation in Adelaide is well-organised, with an extensive public transportation system, including buses and trams, making it easy for students to navigate the city. Additionally, Adelaide is known for its bike-friendly infrastructure, providing an eco-friendly and convenient mode of transportation.

Keith Censoro Master of Public Policy, Philippines

Getting around Adelaide



Health

Health insurance

Overseas Student Health Cover (OSHC) is compulsory for international students. If you are bringing dependents, you must purchase family cover. Your OSHC must be valid for the length of your student visa. Flinders University can arrange your OSHC for you through its partner Medibank.

For information on OSHC: medibankoshc.com.au

Activate your Medibank OSHC now: medibankoshc.com.au/oshcactivate

International students from selected countries may not be required to purchase OSHC due to reciprocal arrangements between Australia and their government. Visit students.flinders.edu.au/support/iss/health-cover

Campus health services

Health, Counselling and Disability

The University provides a confidential health, counselling and disability service to all currently enrolled students at our fully equipped and accredited Medical Centre. The doctors direct bill Medicare, Medibank Private, Bupa and Allianz Global Assistance. International students with a different private health insurer will need to pay up-front on the day of their appointment and have the money reimbursed by the insurance company. students.flinders.edu.au/support/hcd/health

Health2Go

Health2Go offers a range of allied health services for vision, hearing, speech pathology and physiotherapy services available at the one easily accessible location. As these services are not included in your overseas student health cover, you will need to pay for the service. health2go.com.au

Pharmacy

Flinders has an on campus pharmacy located in the Plaza at Bedford Park. (H9 Campus Map).



Flinders University stood out as the right choice for several reasons. Firstly, Flinders' commitment to fostering a supportive and inclusive learning environment was crucial for me. The university's emphasis on student well-being and accessible faculty creates an engaging academic experience.

Stanley Ndezwa Bachelor of Computer Science, Kenya



Safety

Australia is a safe and secure place to live and study. Like all major cities in the world it is important to consider your personal safety in relation to where you are, what you are doing and who you are with. As you would at home it is good practice to consider your personal safety and to develop a personal safety plan.

Calling emergency services

DIAL 000 for police, ambulance or the fire brigade. You can also dial 112 and the call will be forwarded to 000 even if the phone is locked.

If you have a disability Text call emergency – for TTY or ASCII Dial: 106.

Campus Security

Security officers are available 24 hours a day via 8201 2880 or email security@flinders.edu.au.

Security and Lost Property are located next to Flinders Connect on the Plaza.

flinders.edu.au/campus/bedford-park/facilities-services/security



I chose to study in Adelaide because it's an affordable, safe city and you can get almost anywhere within 25 minutes. Additionally the beaches are gorgeous and only a quick tram/bus ride away if I want a short study break.

Chase Bolton Doctor of Medicine, Canada

Academic information

Enrolment

Coursework students can find out how to plan their studies, enrol in topics (subjects) and register in classes (such as lectures, tutorial and workshops). To plan your study visit students.flinders.edu.au/new-students/plan-your-study

Student ID Card

You can request your student ID card online by selecting ‘Order my ID Card’ from your Okta dashboard (flinders.okta.com) the day after you complete your enrolment. To collect your student ID card visit Flinders Connect: students.flinders.edu.au/support/flinders-connect

Flinders Learning Online (FLO)

FLO is the university’s online learning platform where you can find all information about your topic details and guidelines. Please make sure you read the Statement of Assessment Methods (SAM) for all your enrolled topics.

If you need FLO help, visit the “Help” section on canvas.flinders.edu.au



My experience at Flinders wouldn’t be fulfilled without the incredible support from the Flinders support services, particularly the International Student Services (ISS). Whenever I needed assistance or had any queries I reached out to ISS, and their enthusiastic support was a game changer.

Thi Hong Nhung Do, Bachelor of Business (Marketing), Vietnam

Student Learning Support Service

The Student Learning Support Service offers a range of support to help with your studies. From academic writing, basic mathematics, endnote, study skills and referencing and the popular English Language Support Program to improve your English to online learning support and an English Language Support Program to improve your English. students.flinders.edu.au/support/slss

Library

Get help with finding the resources you need for assignments. Visit branches across campuses for study spaces, bookable rooms, and facilities including computers and printing. The library at Bedford Park is open 24/7 and the library at Flinders City Campus is open 9-5 on weekdays.

Academic Advocacy

A Student Advocacy Officer from Student Assist can guide you if you are having an issue that relates to an academic matter. Seek support from FUSA at: fusa.edu.au/academic-advocacy

Ranked top 25 in the world for impact.

The University Impact Rankings 2025)

Useful apps

Download the following apps to quickly access useful information and support:

Lost on campus
studentvip.com.au/lost-on-campus

Bureau of Meteorology Weather
bom.gov.au/app

Adelaide Metro
adelaidemetro.com.au/plan-a-trip

Affordable SA
affordablesa.com.au

Medibank OSHC
medibankoshc.com.au/oshc-support/mobile-apps

Okta dashboard
students.flinders.edu.au/support/computing/okta

Connecting with Flinders

International Student Services (ISS)

Student Life, Level 1 of the Hub
Phone (618) 8201 2717
Email: iss@flinders.edu.au
J10 Campus map (flinders.edu.au/content/dam/documents/campus/maps/campus-map.pdf)

Health, Counselling and Disability Services	8201 2118
After hours crisis counselling support line	1300 512 409 or text 0488 884 103
Campus Security (24 hours a day)	8201 2880
Flinders Connect	1300 354 633
Flinders Living	7221 8900
Careers and Employability Services	8201 2832
Flinders University Student Association	8201 2371
Oasis	8201 3530

Flinders University Pre-departure Guide 2026

International Student Services

+618 8201 2717

students.flinders.edu.au/support/iss